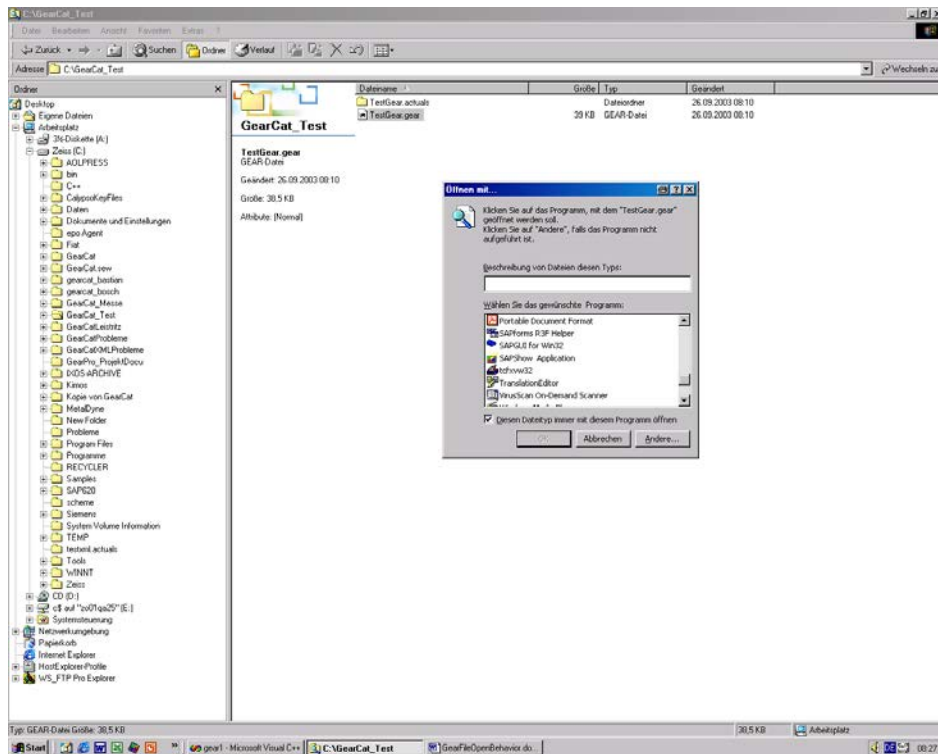


Misdirected open behavior from .gear and .act files

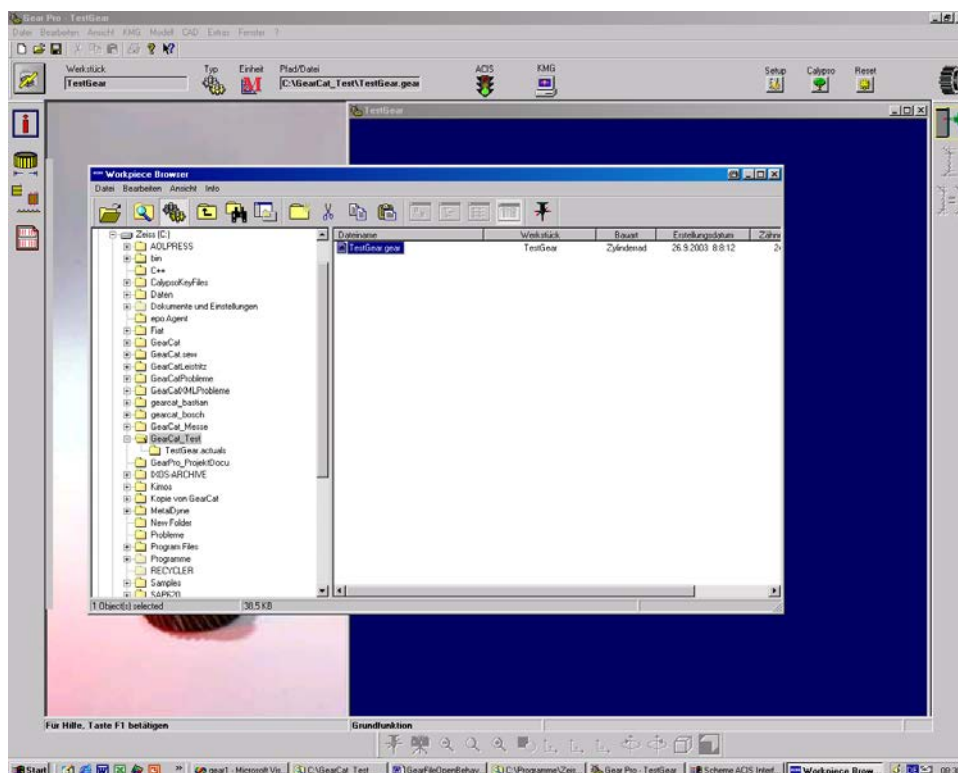
1. Standard-behavior:

For files with the extension .gear and .act no links are defined.

Double-Clicking a gear nominal file (extension .gear) or an actual file (.act) using the windows explorer normally opens then the “open with“ dialog.



In this case the gear work piece will be loaded via Workpiece Browser into GearPro

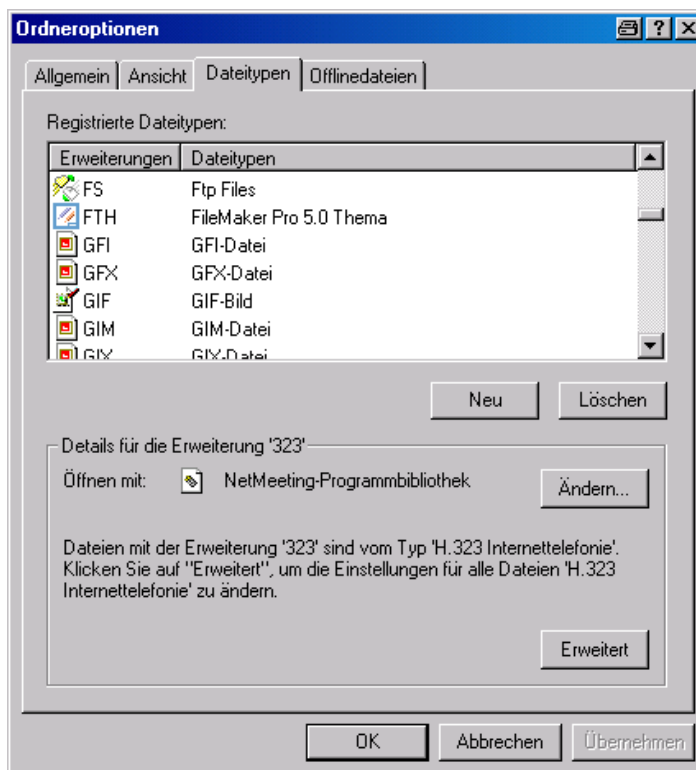
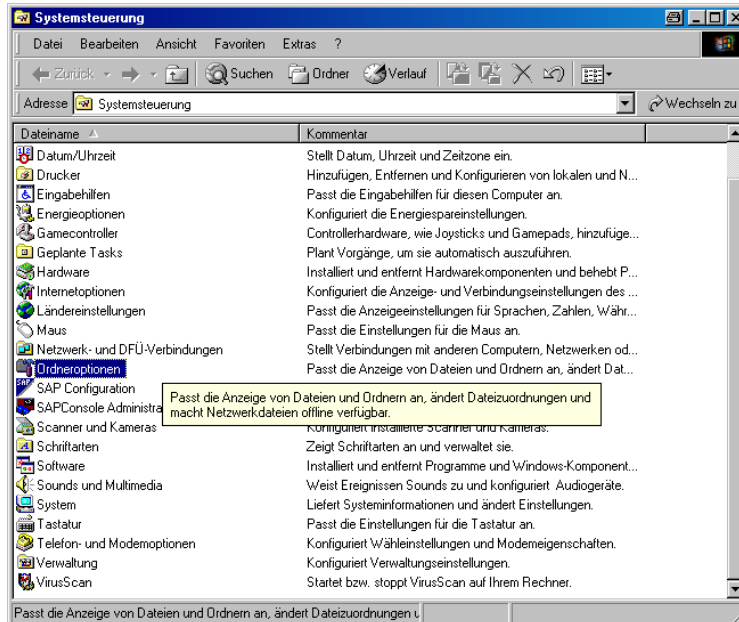


2. Non-Standard-behavior:

If the standard behavior does not work correctly do the following steps:

2.1 Opening the windows file options:

Use the windows system control for file options to setup a link



Using this dialog you may add, verify or change any registered file links.

a) If there is a link for .gear or .act files defined:

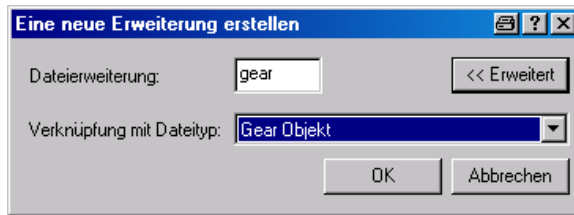
- The Workpiece Browser may change his behavior and he would like to start GearPro again or he starts the "open with" dialog.
- To solve the problem, use the DELETE button to remove the registration of files with the extension .gear or .act from the registry.
- We have detected some software errors with this file options dialog from MS. Sometimes the wrong information is shown. In this case define a .gear or an .act link and delete this again after definition.

b) If there is no link for .gear or .act file defined:

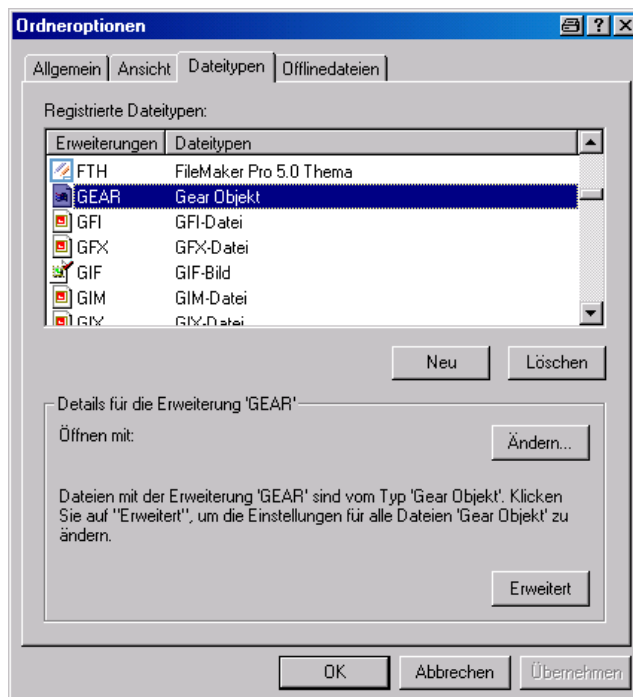
- If the system still does not open the files from the Workpiece Browser create the links and after that delete them.

2.2 Definition of a link for .gear and .act files:

1. Press the NEW Button in the file type register dialog
2. Assign "Gear Object" to the file extension "gear" or "act"

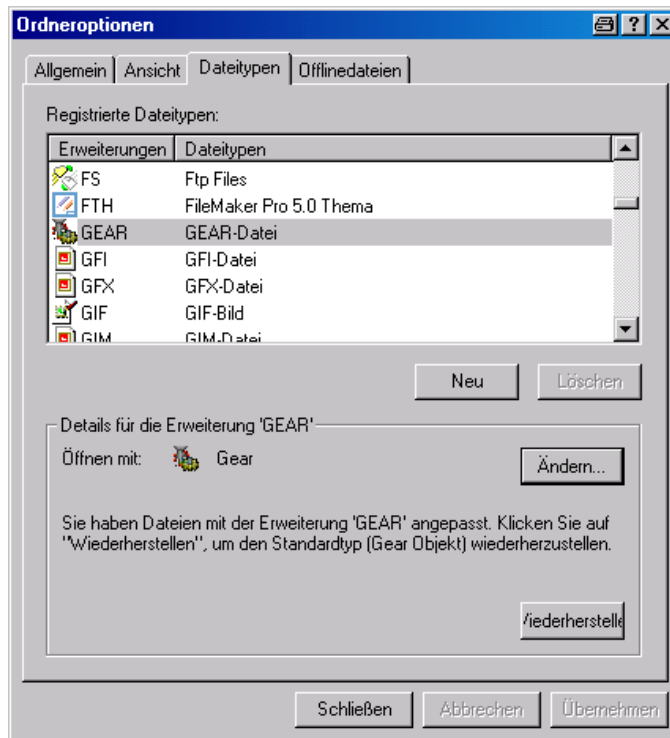


3. After this "gear" or "act" file types are listed in the list box for registered files.



4. The "open with" text entry keeps still empty. This means no program will be started after double clicking gear files.

With the CHANGE button a link to gear.exe can be defined.



After this definition, files with the extension .gear or .act are become sensitive to double clicking and the system tries to start GearPro.