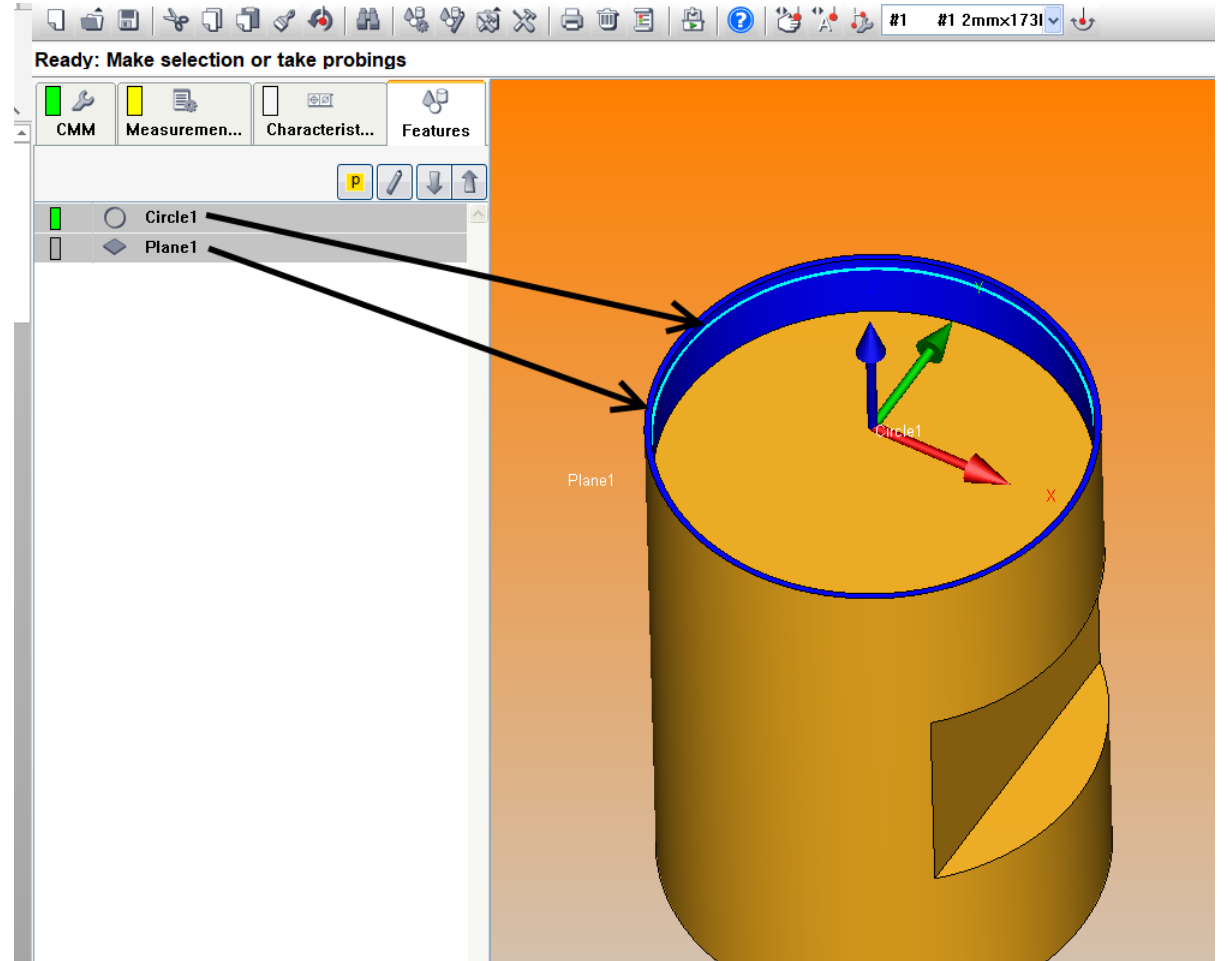


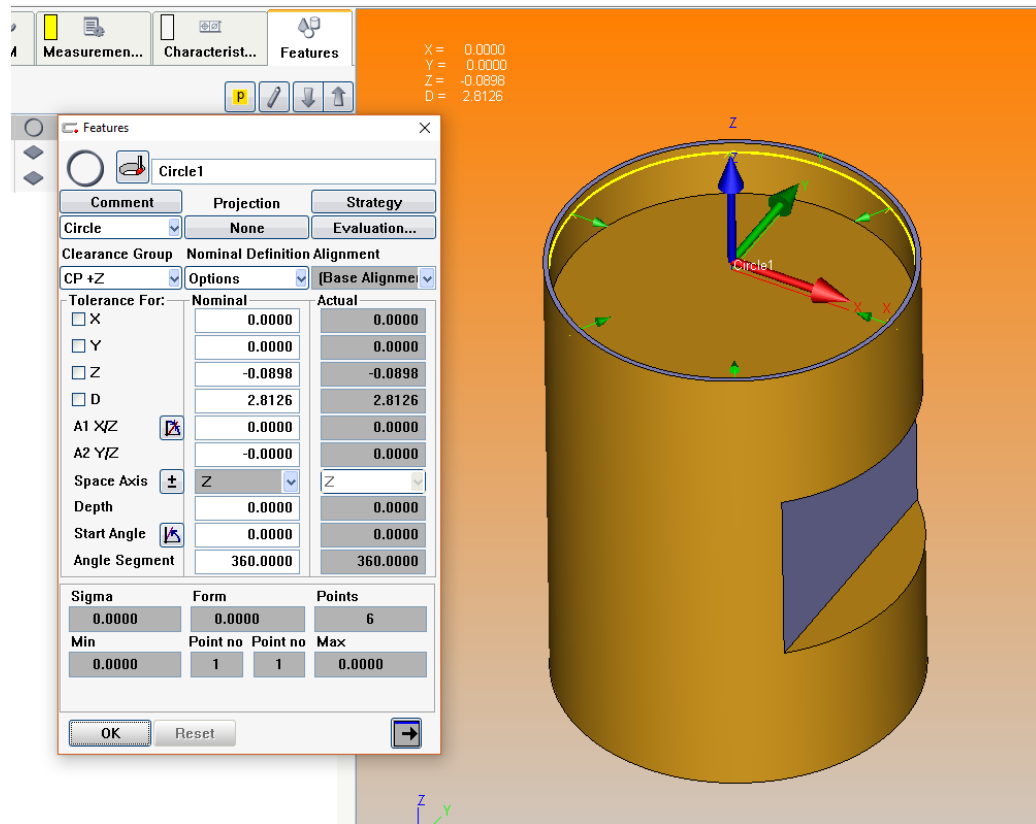
Formulas

Circle 1 – ID

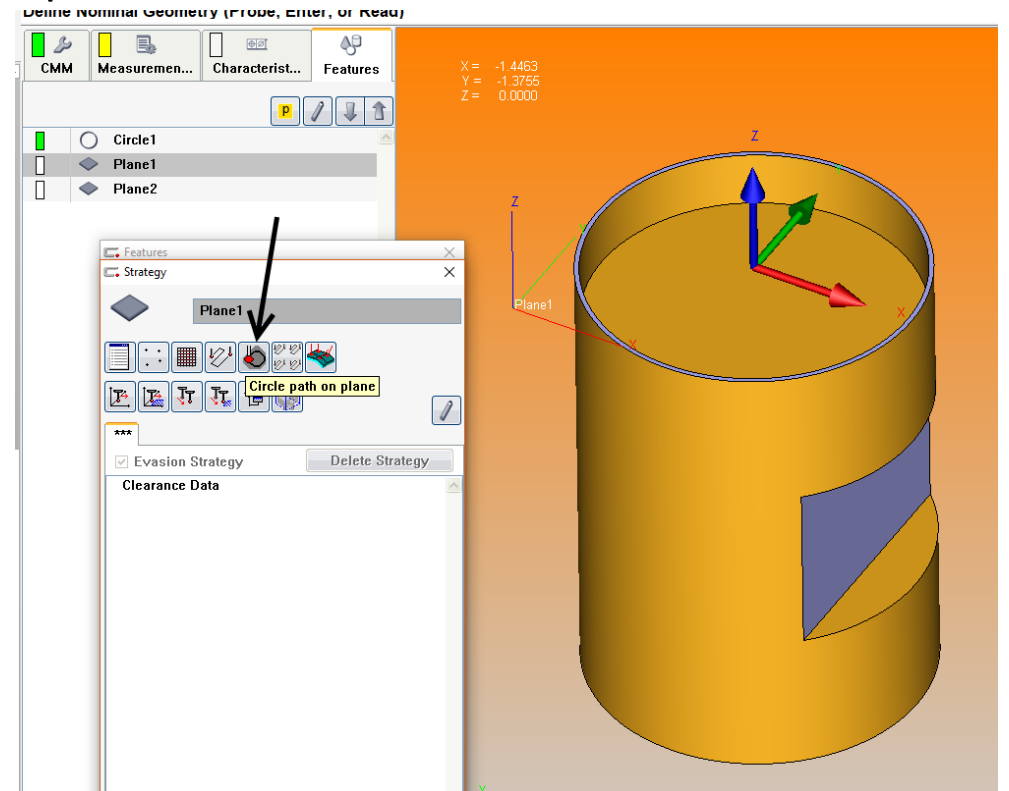
Plane1 - .020 thick plane



- Measure Circle1

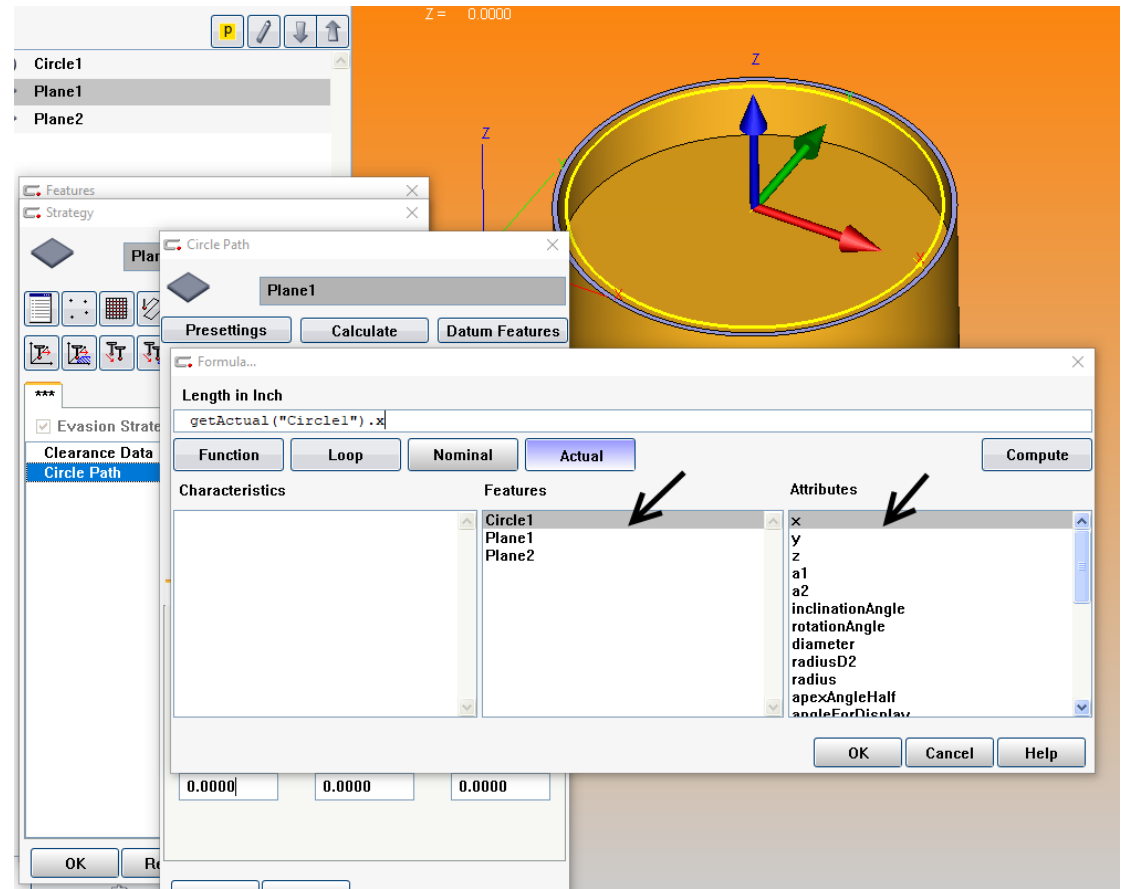
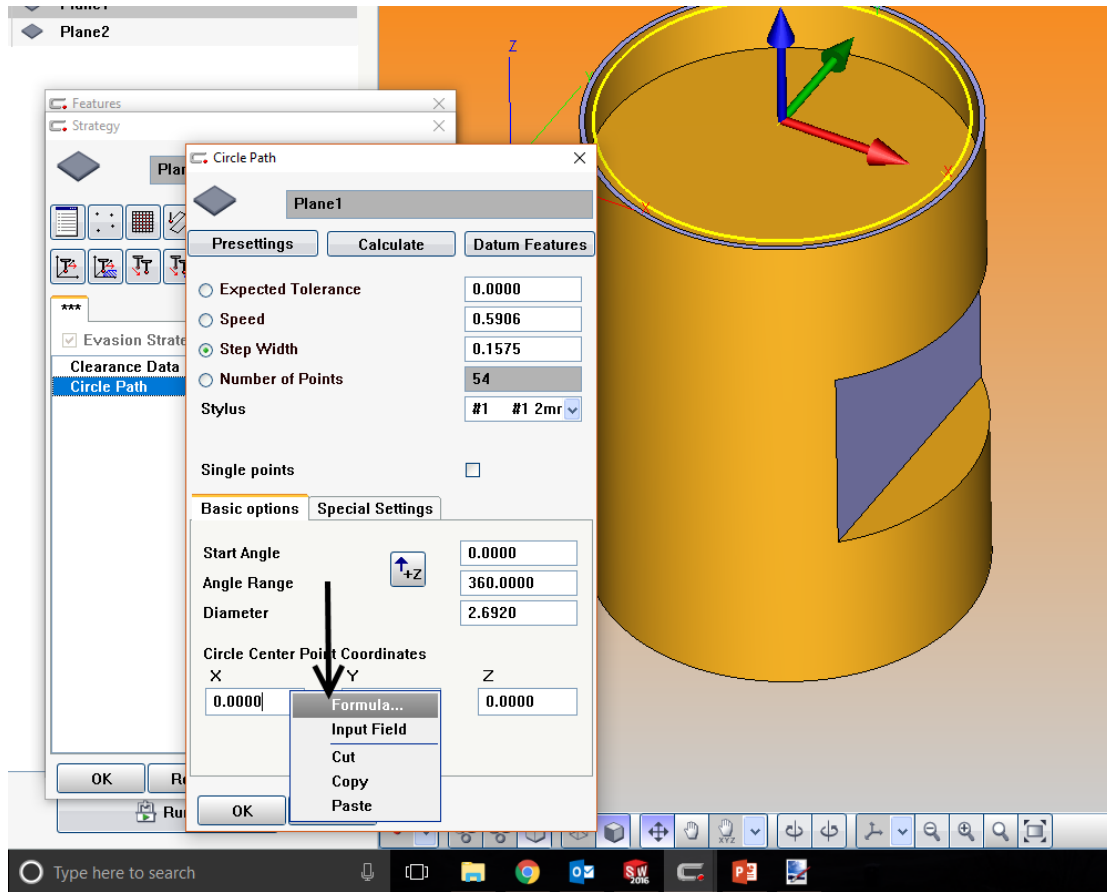


- Open Plane1 Strategy then select “Circle path on plane”



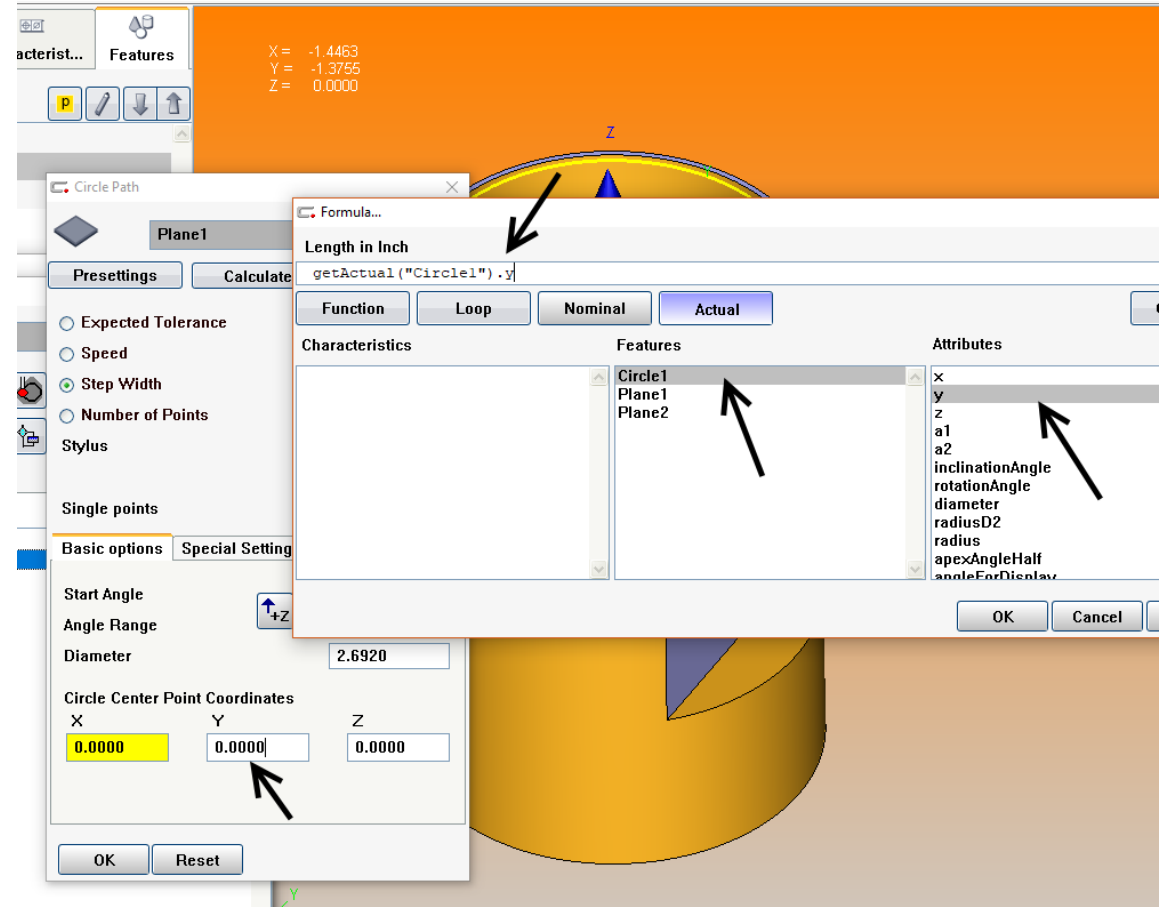
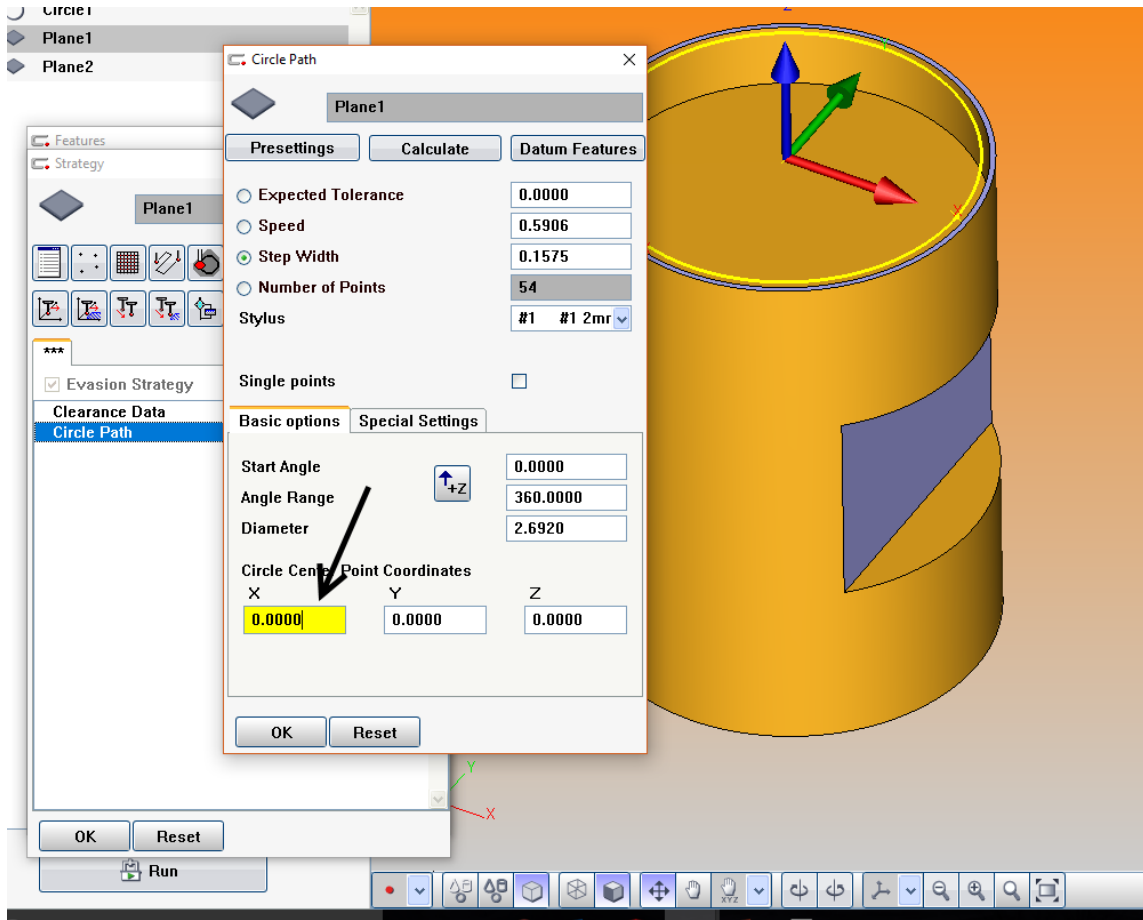
- Open Circle Path, right click on “X” & select Formula

- The Formula window shows Features and Characteristics, double click Circle1, then double click “x” & click ok.

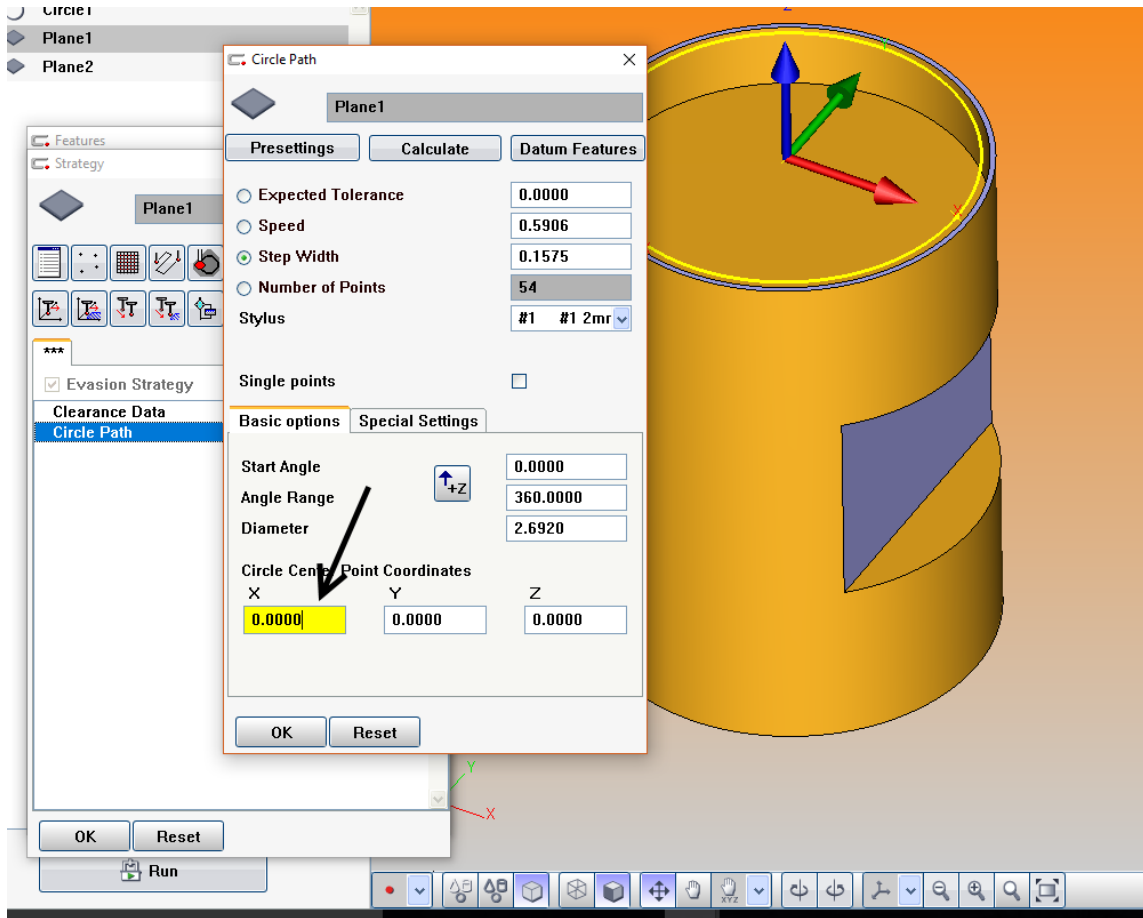


- The “X” box should now be highlighted in Yellow.

- Repeat this method for the “Y” box...



- The “X” box should now be highlighted in Yellow.



- Click and drag the yellow circle to be measured on the plane to adjust the Diameter. This can also be manipulated with a Formula.

