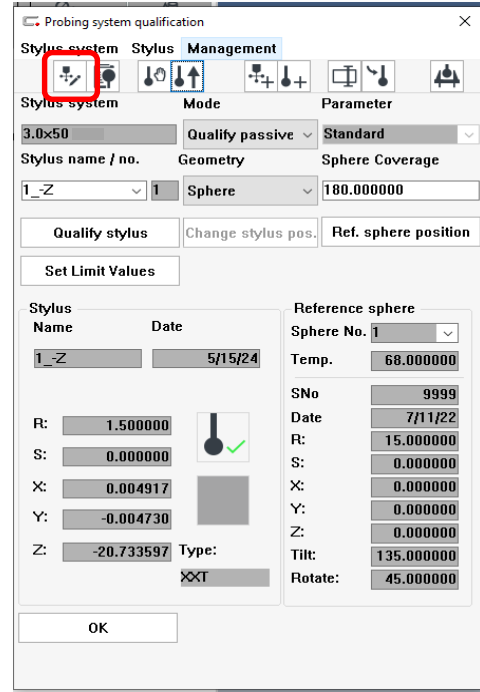
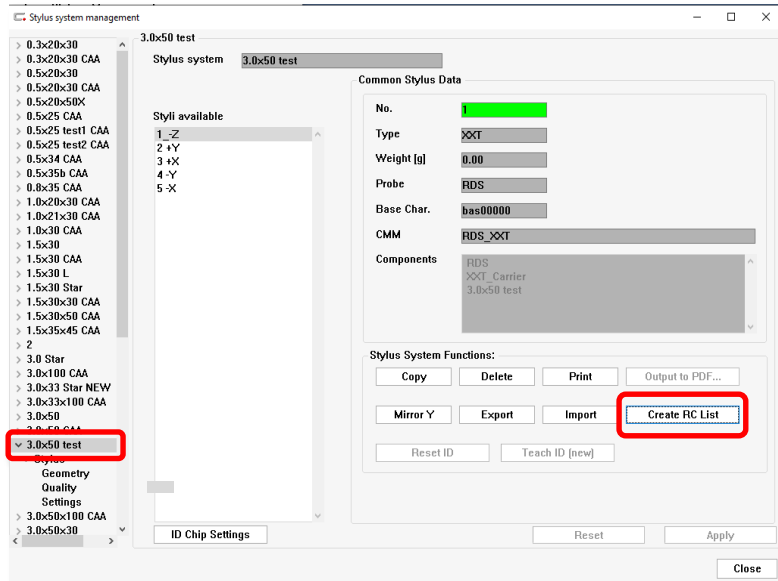


Importing Stylus Systems from CMM into Planner Seat on Calypso v2023

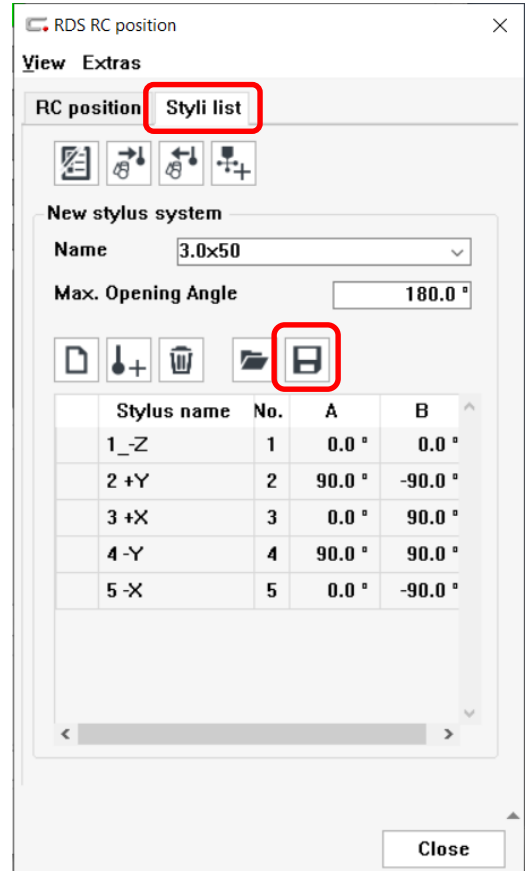
1. **On CMM**, open **Probing System Qualification** window and click on **Stylus System Management** icon.



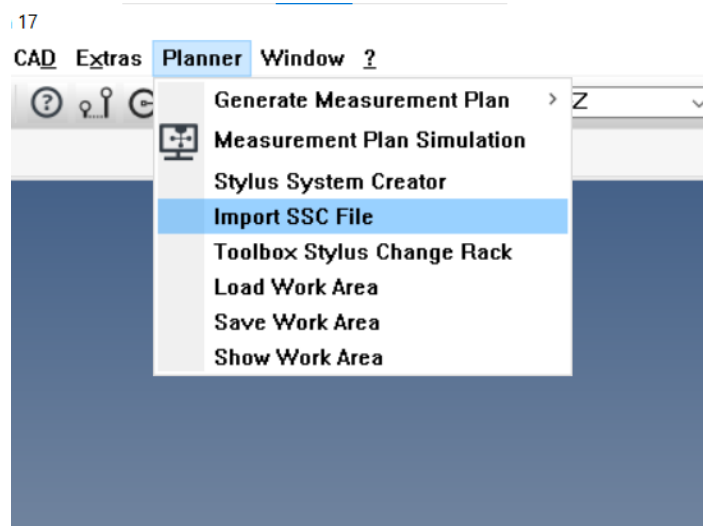
2. Select desired stylus system on left, then click **Create RC List** (at lower right)



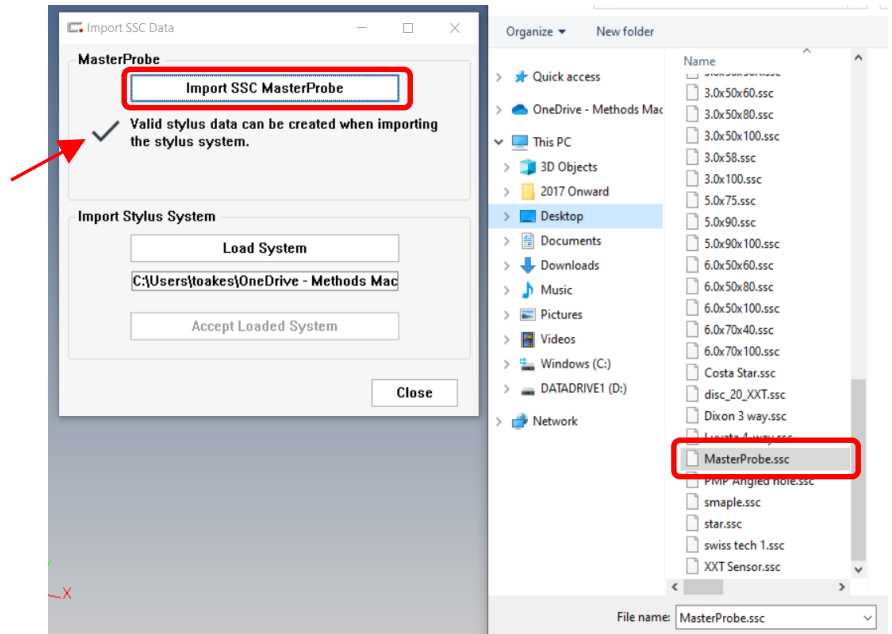
3. Click **Styli list** tab, then click **Save** icon, then save the .txt file on desktop, preferably in a folder on the desktop.
4. Repeat steps 2 and 3 for all desired stylus systems, then transfer all files to desktop of offline system.



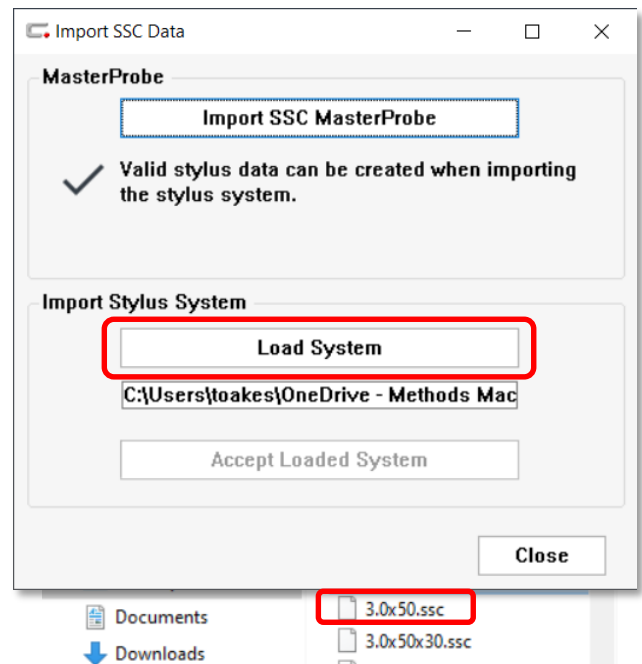
5. **On Offline system**, go to menu item **Planner** and select **Import SSC files**.



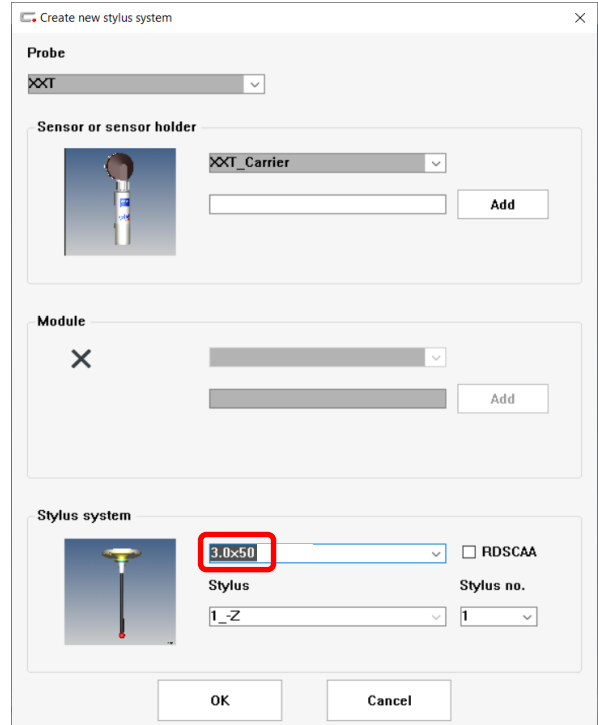
6. On first time only, select **Import SSC MasterProbe**, then select the ssc file designated as MasterProbe. Checkmark signifies success. **This does not need to be done again as long as checkmark is active.**



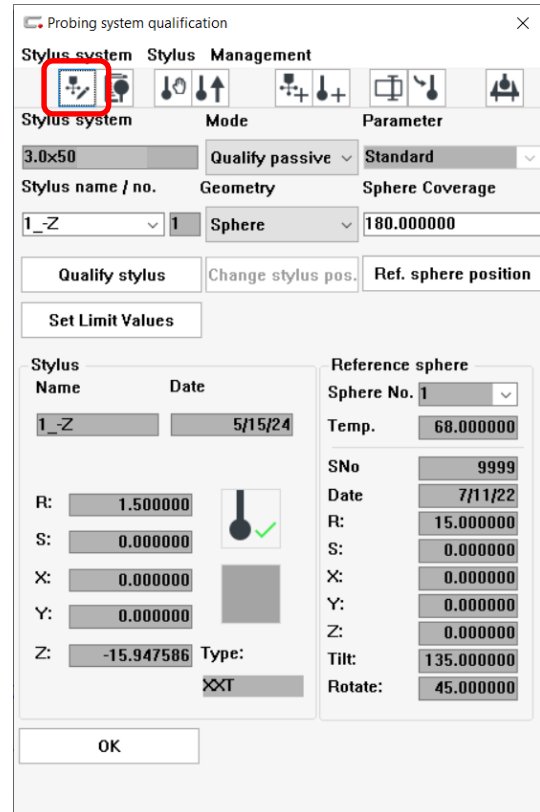
7. Click **Load System**, then select the ssc file for desired stylus system that needs updating, then click **Accept Loaded System**.



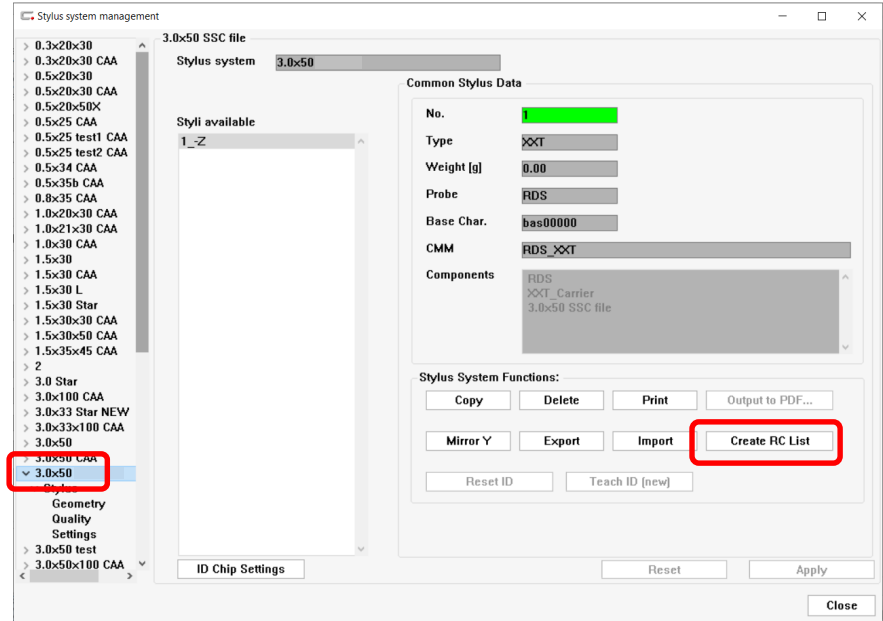
- Click OK on **Create new stylus system** window.
Click **Close** on **Import SSC Data** window.



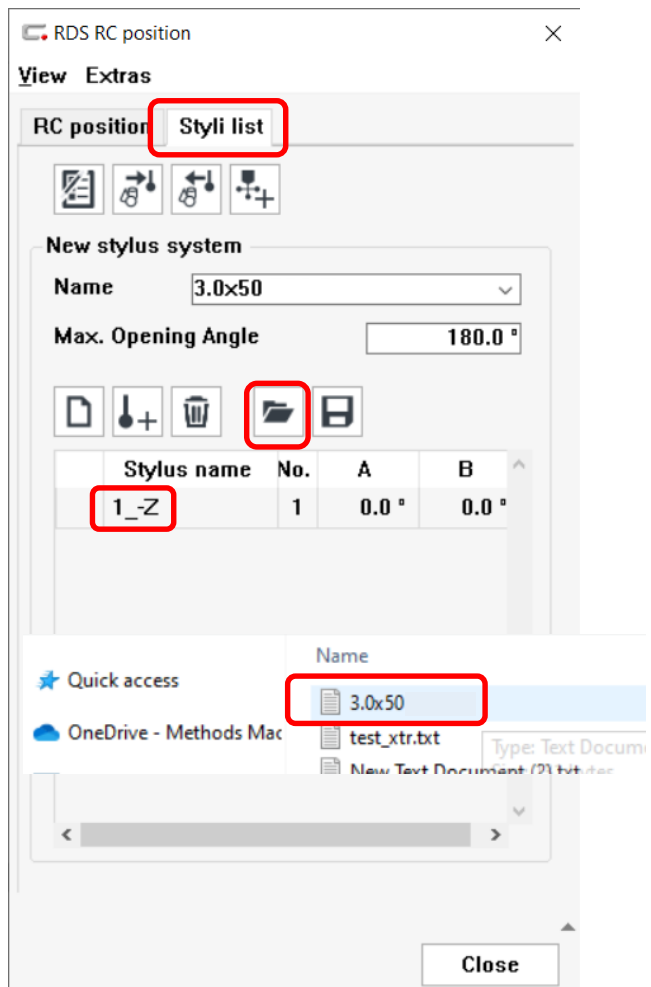
- Open **Probing System Qualification** window, then select **Stylus System Management** icon.



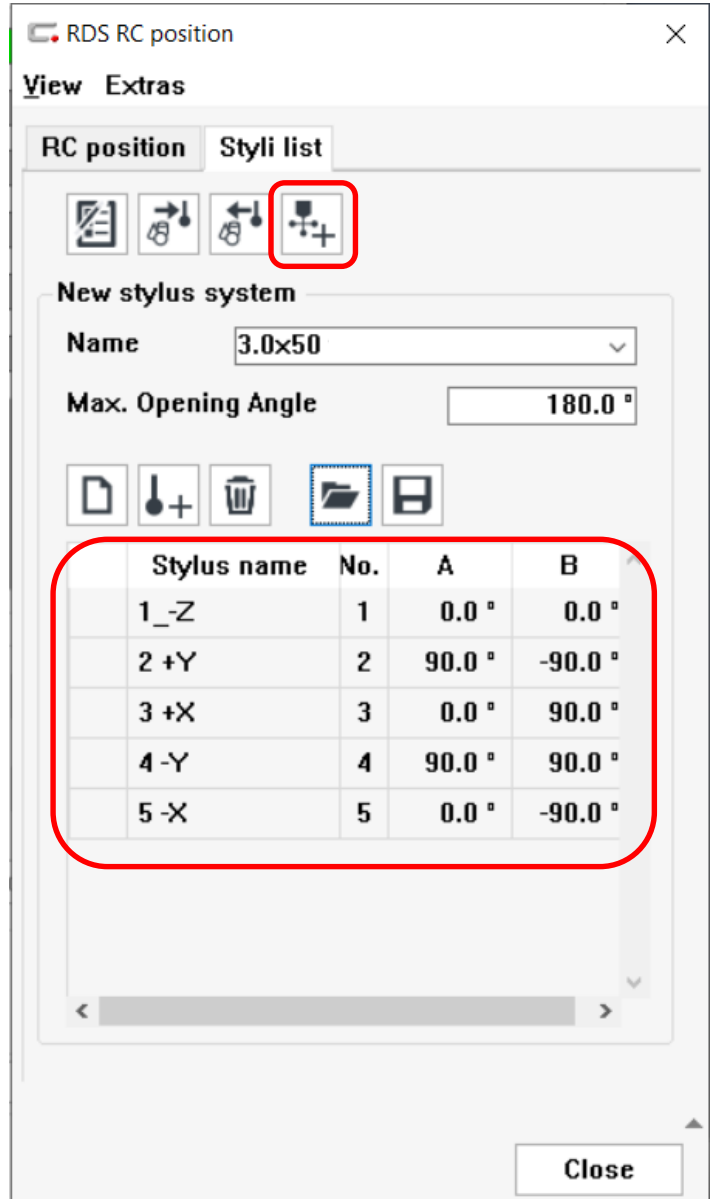
10. If newly imported stylus system is not active at left, select the correct one, then click **Create RC List** button at lower right.



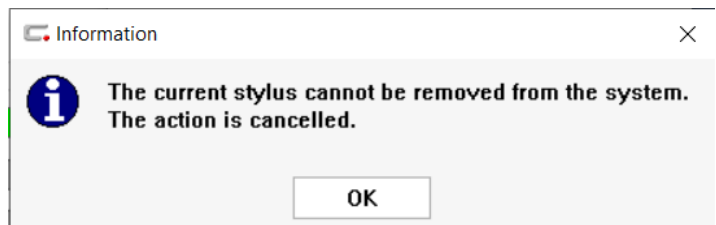
11. Click **Styli list** tab. List should only show original 1-Z styli, then click "Open Folder" at middle. Next, select .txt file, created on cmm, for desired stylus system. And click OK.



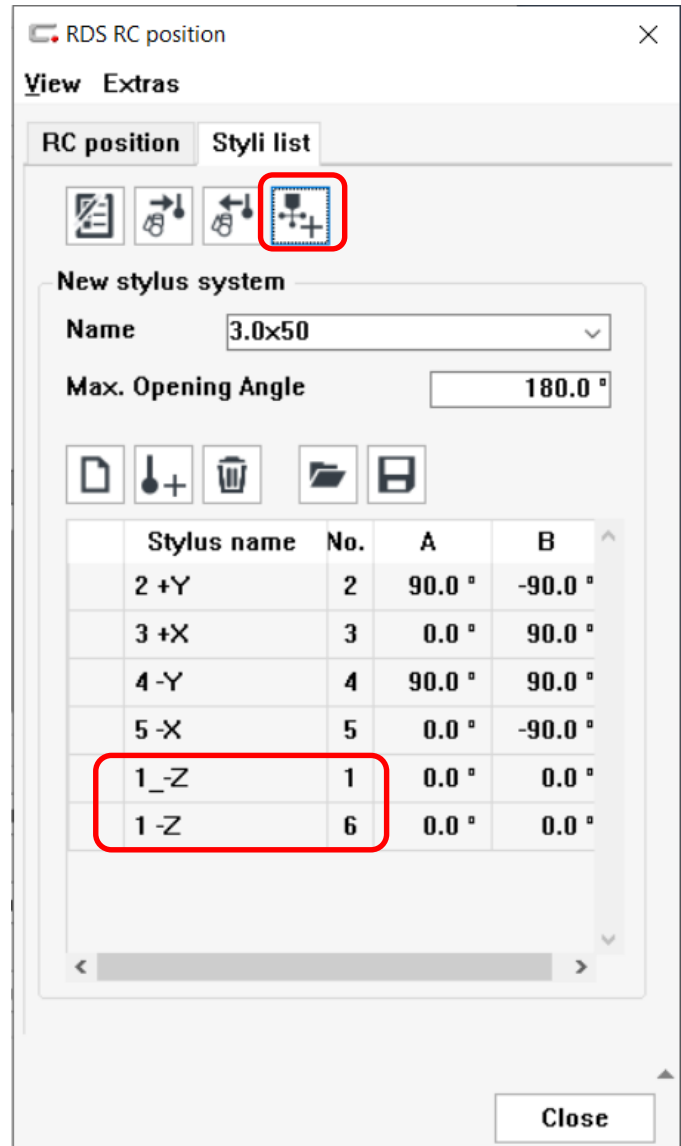
12. Styli list should show all of the stylus names and RDS angles from cmm stylus system. Next, click **Create a New Stylus System** icon at top.



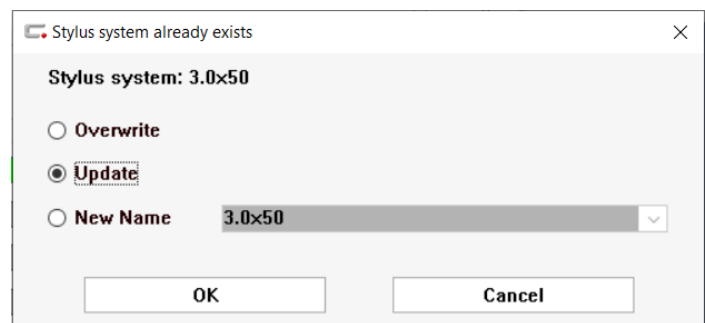
13. Nothing to worry about. Click OK



14. Window now shows the original (1_-Z 1) stylus from the SSC file and the (1 -Z 6) from the machine's text file. Note: The SSC stylus has an underscore in the name. Next, click **Create a New Stylus System** icon at top again.

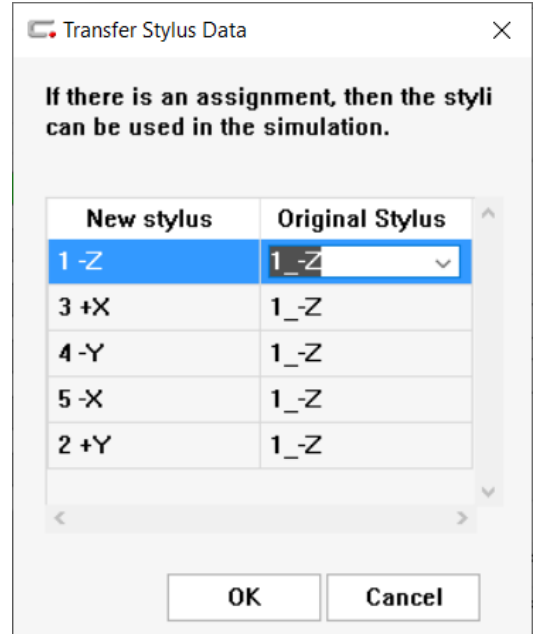


15. Select **Update** and click **OK**



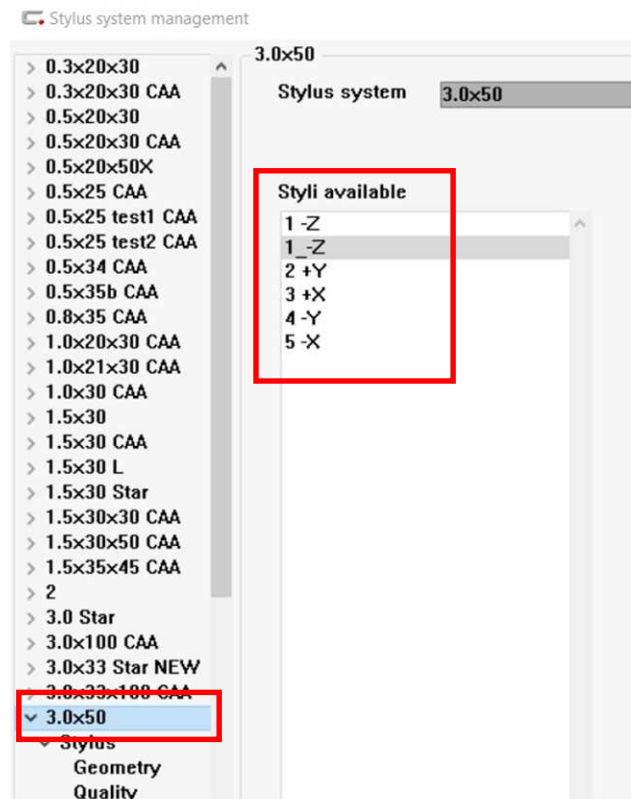
16. This window assigns the graphic information from the SSC stylus to the newly added styli from CMM. Just click OK

Then, click OK to close the RDS RC Position window,

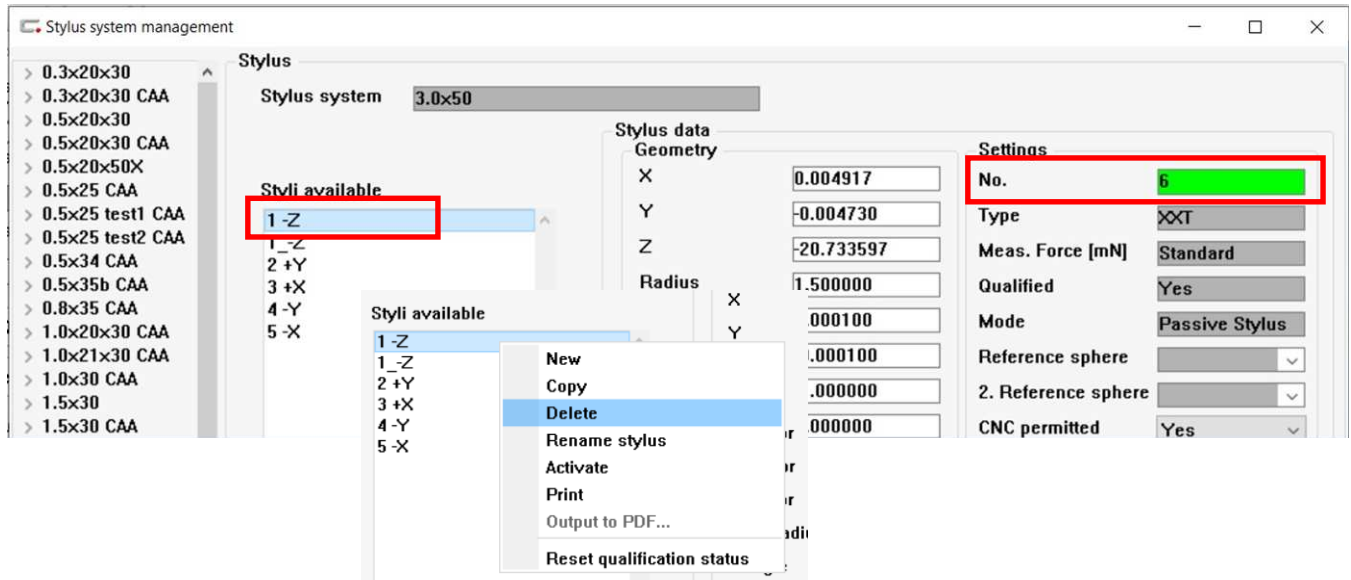


17. Then, close and re-open the Stylus System Management window. You should now see all of the styli from the CMM and the styli from the SSC file.

Alternatively, you can select a different stylus system and then re-select the one you're working on to re-fresh the list.



18. Right-click on the 1 styli from the Styli Available list that does not have a stylus number of 1 at the right, and select Delete.



Repeat steps 7 thru 18 for each of the stylus systems.

If you have a problem with the name of your stylus system not matching the name on the CMM. You can select the stylus system with the incorrect name and then click the Copy button and enter the correct name in the dialog box. This makes a fully qualified version of the original stylus system.

