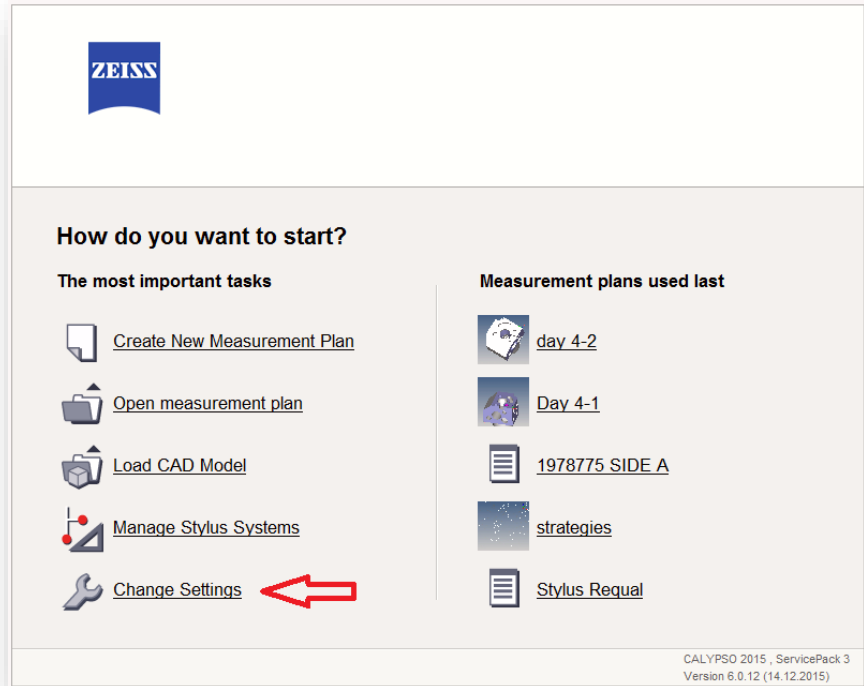
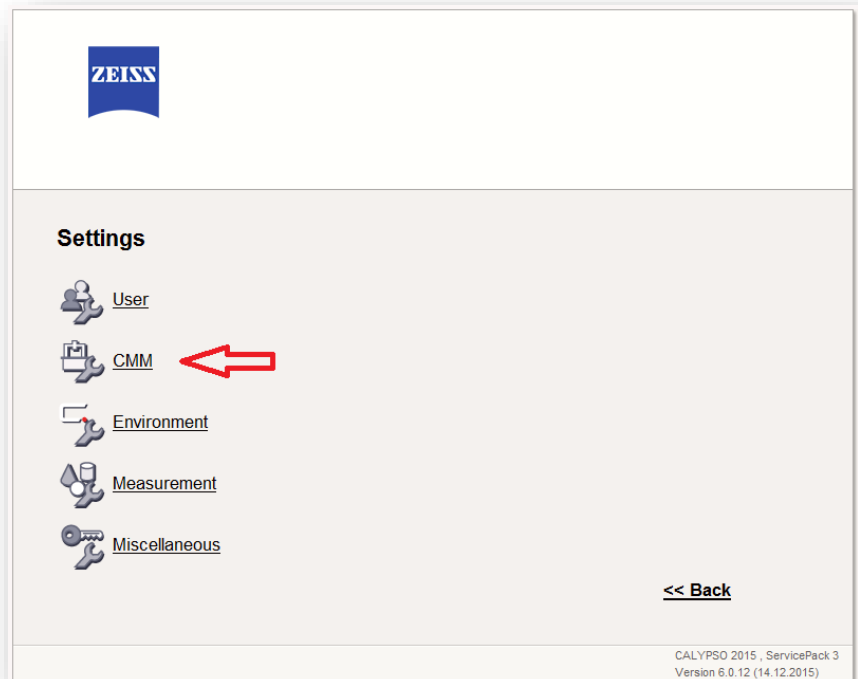


CMM Window

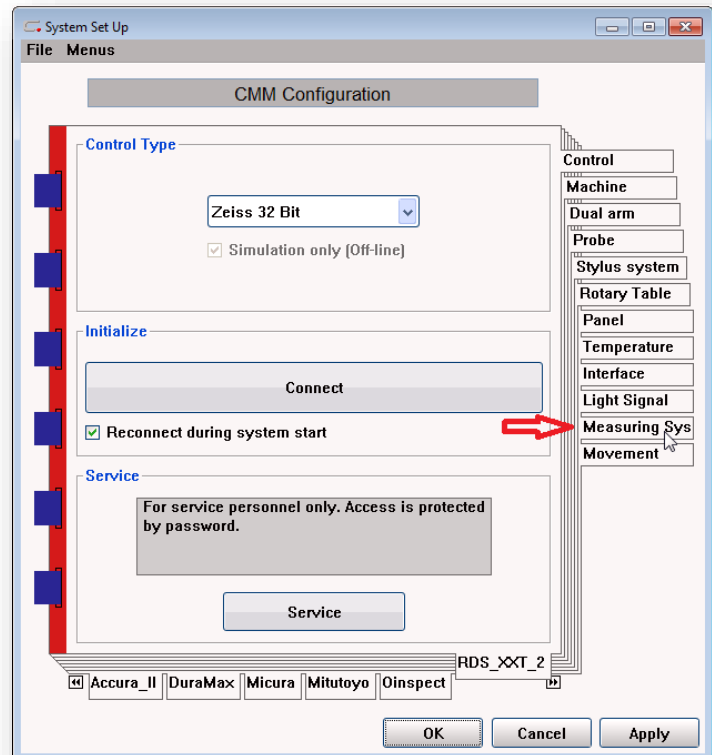
To open **CMM** window, click **Change Settings** found at bottom of Start window



Click **CMM**



Click **Measuring System** tab at right

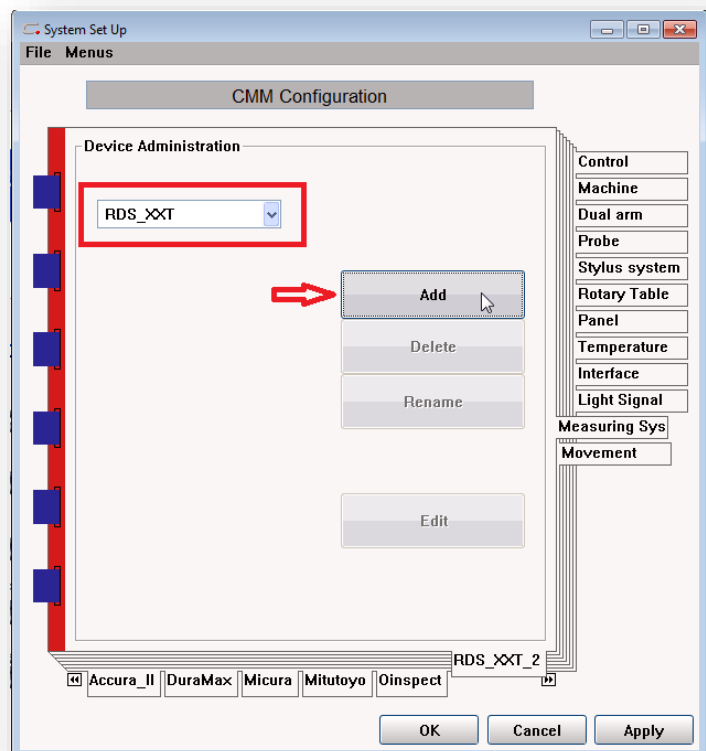


Type desired machine name
(Note: No spaces allowed in name)

Press tab key

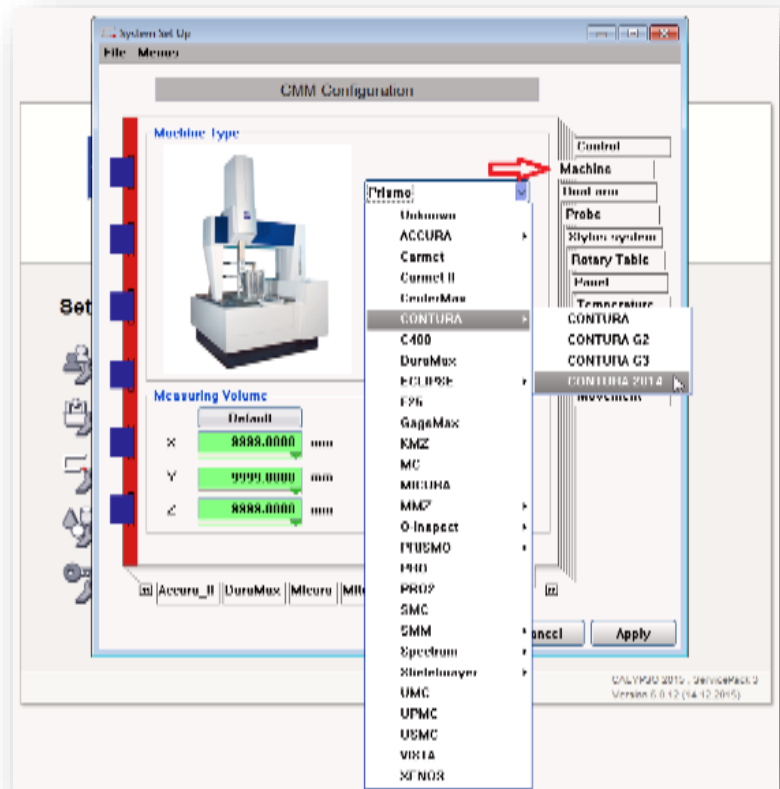
Click **ADD** button

Click **Apply** button



Click **Machine** tab at right

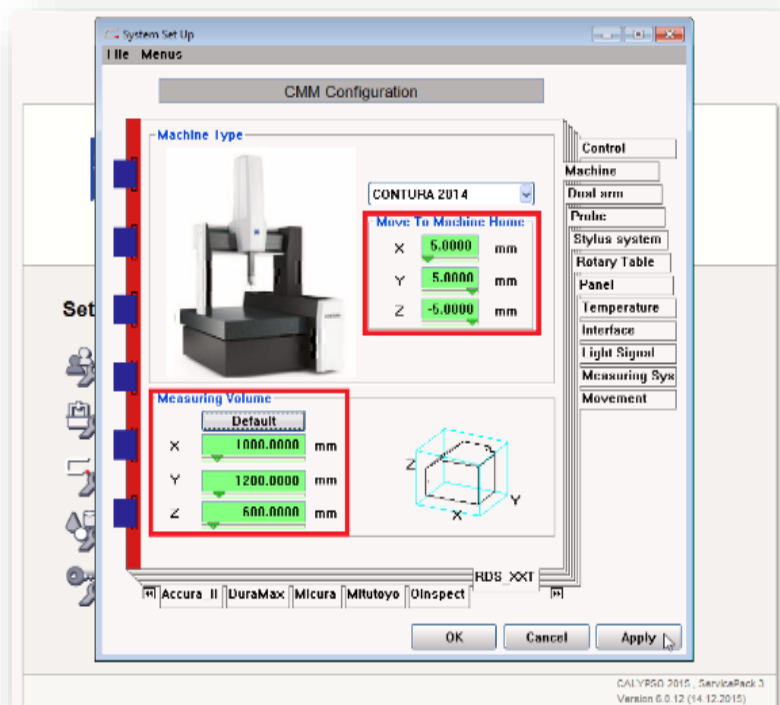
Select machine type from dropdown list



Enter **Machine Home Offset** values (optional)

Enter **Measuring Volume** values

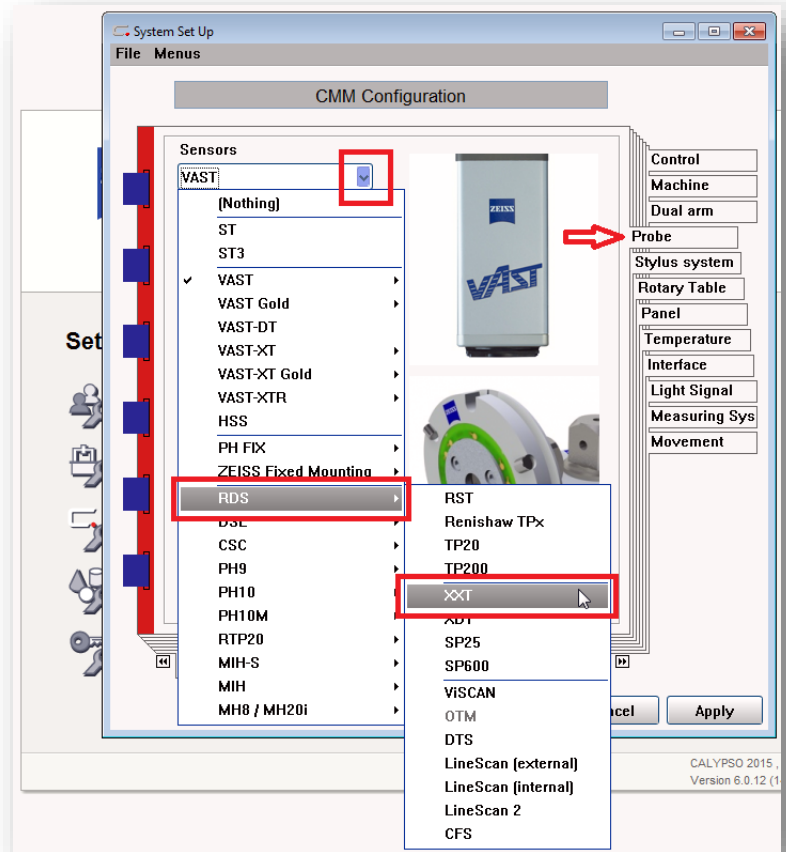
Click **Apply**



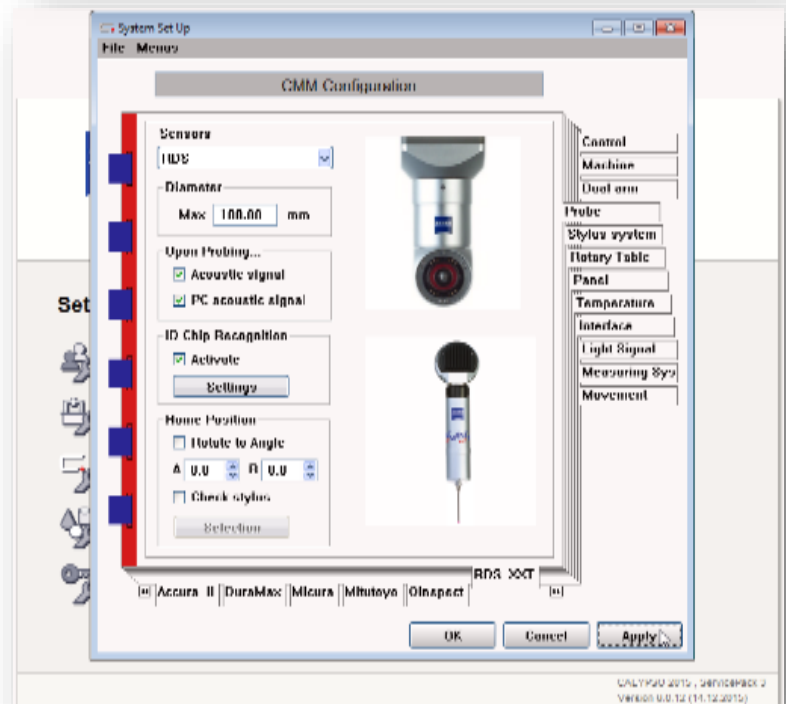
Click **Probe** tab at right

From **Sensor** dropdown list, select **RDS**,
then select **XXT**

Click **Apply**



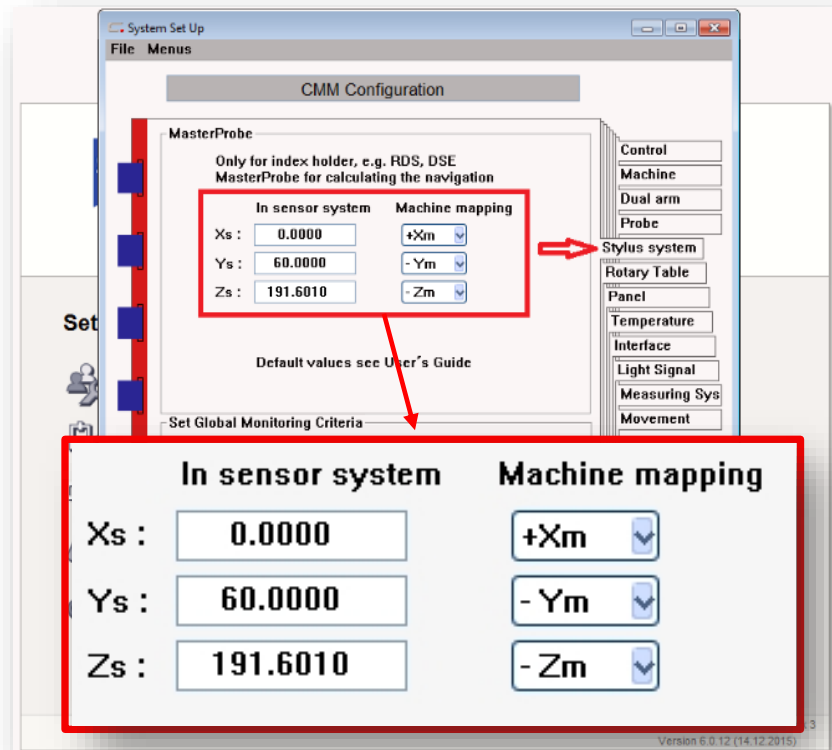
Probe configuration



Click **Stylus System** tab at right

Update values

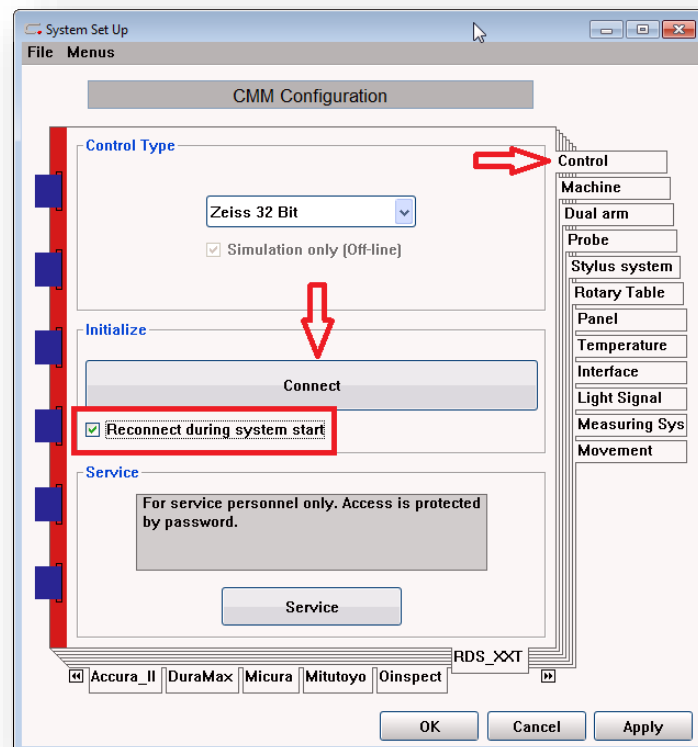
Click **Apply**



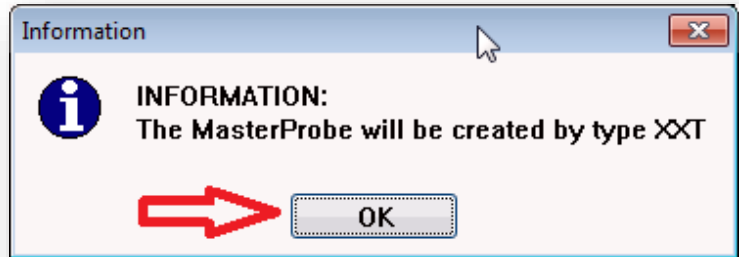
Click **Control** tab at right

Check **Reconnect during system start**
(optional)

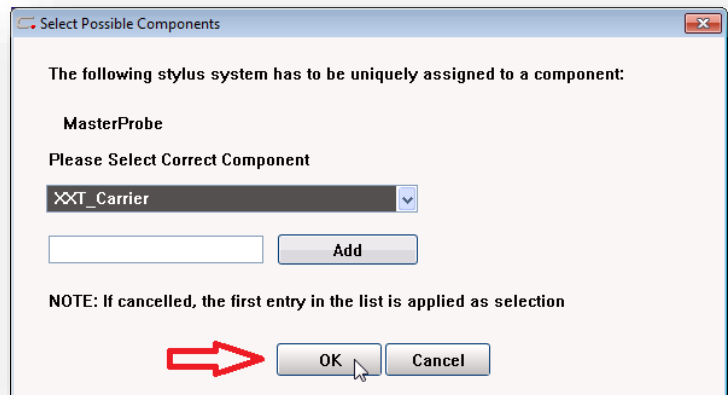
Click **Connect** button



Click **OK**



Click **OK**



Completed machine tab

