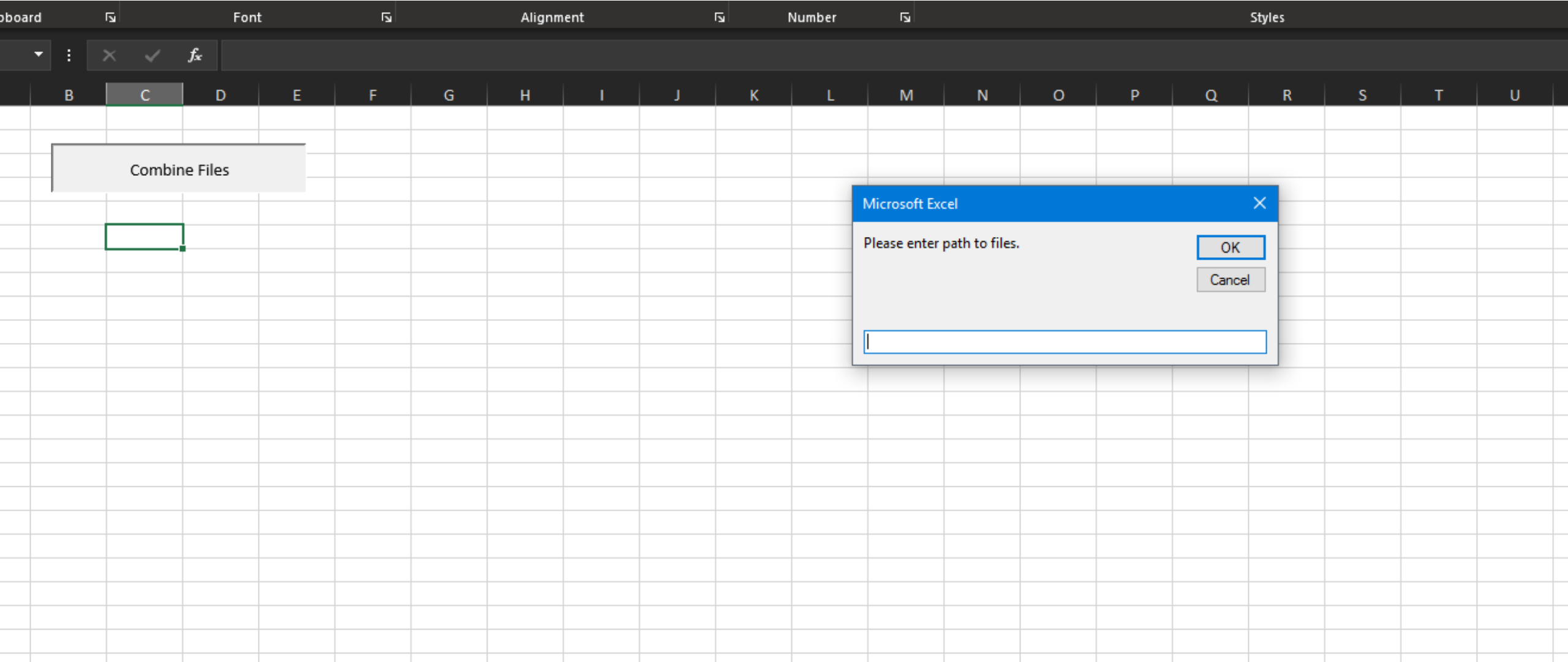
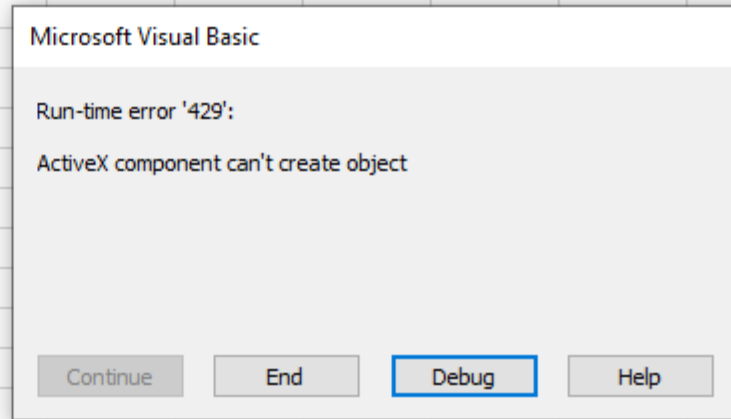


This is the merge file I have been using for years. Now it will not work on my computer. Other computers work fine.



When I click on the “Combine Files” I now get this error.

Combine Files



Debug takes me here. I believe it is something in my excel settings because it works fine on other computers.

The screenshot displays the VBA editor interface for a project named 'Merge.xls'. On the left, the Project Explorer shows the 'VBAProject (Merge.xls)' containing 'Microsoft Excel Objects' (Sheet1, Sheet2, Sheet3, ThisWorkbook) and 'Modules' (Module1). The Properties window below it shows 'Module1' selected. The main Code window, titled 'Merge.xls - Module1 (Code)', shows the following VBA code:

```
Sub CombineFiles()  
  
    Dim wkbSource As Workbook  
    Dim wkbTarget As Workbook  
  
    Dim wksSource As Worksheet  
    Dim wksTarget As Worksheet  
    Dim bFirstPass As Boolean  
    Dim rng As Range  
    Dim vPath As String  
    Dim lEndRow As Long  
  
    Dim fso As Object  
    Dim fldSource As Object  
    Dim fWorkbook As Object  
    Set fso = CreateObject("Scripting.filesystemobject")  
  
    vPath = InputBox("Please enter path to files.")  
    If fso.folderexists(vPath) Then  
        Set fldSource = fso.getfolder(vPath)  
        Application.ScreenUpdating = False  
        Application.AutomationSecurity = msoAutomationSecurityForceDisable  
  
        bFirstPass = True  
        For Each fWorkbook In fldSource.Files  
            If Right(fWorkbook.Name, 3) = "xls" Then  
                Set wkbSource = Workbooks.Open(fWorkbook.Path)  
                Set wksSource = wkbSource.Worksheets("Report")  
  
                lEndRow = wksSource.Range("A" & wksSource.Rows.Count).End(xlUp).Row  
                If bFirstPass Then
```