



ZEISS CALYPSO

7.2

Part name	TextElement		
Drawing number			
Order number			
Variant		Last 1 measurements	
Company	CZ IMT GmbH	► Approval ≠ Gesperrt	
Department	QS	Part ident	25
CMM Type	Prismo	Time/Date	6/30/2021 3:32 PM
CMM No.	000000	Run	All Characteristics
Operator	Master	No. measured values	32
Text	<input type="text"/>	No. values: red	0
		Measurement Duration	00:00:01.0

Name	Measured value	Nominal value	+Tol	-Tol	Deviation +/-	
					Feature	Form

1. BorePattern

Lochbild

Textelement X-Values

X-Werte

X → X_Circle-1(1) Index = 1	25.0007	25.0000 Circle-1(1)	0.1000 0.0285	-0.1000 0.0075	0.0007 -0.0163	
X → X_Circle-1(2) Index = 2	12.5001	12.5000 Circle-1(2)	0.1000 0.0293	-0.1000 0.0094	0.0001 -0.0151	
X → X_Circle-1(3) Index = 3	-12.4967	-12.5000 Circle-1(3)	0.1000 0.0318	-0.1000 0.0086	0.0033 -0.0166	
X → X_Circle-1(4) Index = 4	-24.9990	-25.0000 Circle-1(4)	0.1000 0.0298	-0.1000 0.0085	0.0010 -0.0150	
X → X_Circle-1(5) Index = 5	-12.5044	-12.5000 Circle-1(5)	0.1000 0.0303	-0.1000 0.0077	-0.0044 -0.0154	
X → X_Circle-1(6) Index = 6	12.5031	12.5000 Circle-1(6)	0.1000 0.0333	-0.1000 0.0098	0.0031 -0.0164	

Textelement Y-Values

Y-Werte

Y → Y_Circle-1(1)	-0.0001	0.0000 Circle-1(1)	0.0500 0.0285	-0.0500 0.0075	-0.0001 -0.0163	
Y → Y_Circle-1(2)	21.6499	21.6506 Circle-1(2)	0.1000 0.0293	-0.1000 0.0094	-0.0008 -0.0151	
Y → Y_Circle-1(3)	21.6489	21.6506 Circle-1(3)	0.1000 0.0318	-0.1000 0.0086	-0.0018 -0.0166	
Y → Y_Circle-1(4)	-0.0002	0.0000 Circle-1(4)	0.0500 0.0298	-0.0500 0.0085	-0.0002 -0.0150	
Y → Y_Circle-1(5)	-21.6498	-21.6506 Circle-1(5)	0.1000 0.0303	-0.1000 0.0077	0.0008 -0.0154	
Y → Y_Circle-1(6)	-21.6488	-21.6506 Circle-1(6)	0.1000 0.0333	-0.1000 0.0098	0.0019 -0.0164	

Textelement Diameter-Values

Durchmesser-Werte

∅ Ⓜ Dia_Circle-1(1)	12.0036	12.0000 Circle-1(1)	0.1000 0.0285	-0.1000 0.0075	0.0036 -0.0163	
∅ Ⓜ Dia_Circle-1(2)	12.0006	12.0000 Circle-1(2)	0.1000 0.0293	-0.1000 0.0094	0.0006 -0.0151	
∅ Ⓜ Dia_Circle-1(3)	12.0006	12.0000 Circle-1(3)	0.1000 0.0318	-0.1000 0.0086	0.0006 -0.0166	
∅ Ⓜ Dia_Circle-1(4)	12.0012	12.0000 Circle-1(4)	0.1000 0.0298	-0.1000 0.0085	0.0012 -0.0150	
∅ Ⓜ Dia_Circle-1(5)	11.9971	12.0000 Circle-1(5)	0.1000 0.0303	-0.1000 0.0077	-0.0029 -0.0154	
∅ Ⓜ Dia_Circle-1(6)	12.0013	12.0000 Circle-1(6)	0.1000 0.0333	-0.1000 0.0098	0.0013 -0.0164	



ZEISS CALYPSO

7.2

Part name
Order number
Part ident 25
Operator Master
Time/Date 6/30/2021 3:32 PM

Name	Measured value	Nominal value	+Tol		-Tol		Deviation +/-	
			Feature	Form	Sigma	Min	Max	

2. PitchCircle

Lochkreis

Textelement Coordinates

Koordinaten

X	X_Circle-2	0.0007	0.0000	0.0500	-0.0500	0.0007		
			Circle-2	0.0023	0.0012	-0.0013	0.0010	
Y	Y_Circle-2	-0.0015	0.0000	0.0500	-0.0500	-0.0015		
			Circle-2	0.0023	0.0012	-0.0013	0.0010	

Textelement Diameter

Durchmesser

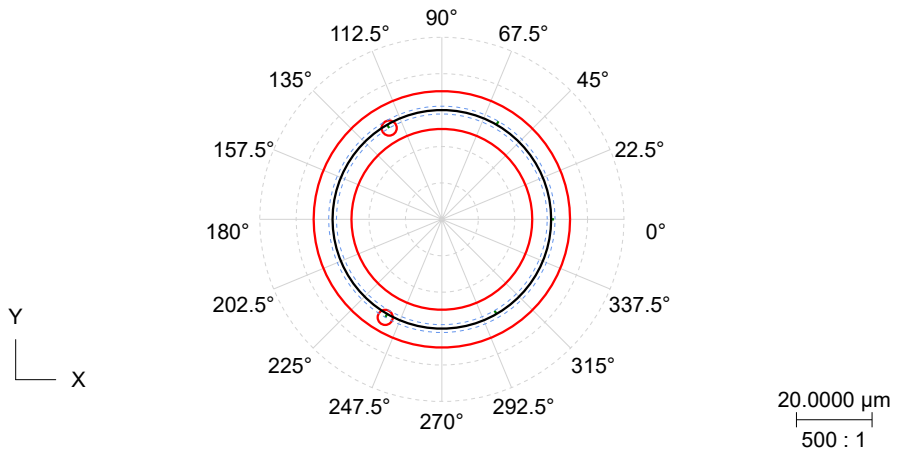
Ø	Dia_Circle-2	49.9991	50.0000	0.1500	-0.1500	-0.0009		
			Circle-2	0.0023	0.0012	-0.0013	0.0010	

Textelement Roundness

Rundheit

○	Round_Circle-2	0.0021	0.0000	0.0100	0.0000	0.0021		
			Circle-2	0.0021	0.0013	-0.0010	0.0010	

Points 6
Filter type No Filter
Lc
W/upr
Vmess[mm/sec]
Probe radius 0.0000
Evaluation method Minimum Feature



3. Special Diameter Circle-1

Min - Max - Delta

Textelement Natural Limit Resultelement

Natürliche Grenze Resultats-Element

MAX	Dmax_Circle-1	12.0036	12.0000	0.1000	-0.1000	0.0036		
			Dia_Circle-1(1)					
MIN	Dmin_Circle-1	11.9971	12.0000	0.1000	-0.1000	-0.0029		
			Dia_Circle-1(5)					
Δ	Ddelta_Circle-1	0.0065	0.0000	0.0100	0.0000	0.0065		

Remark

Event

n.def.