



SOFTWARE INSTALLATION

Supplementary Guide

OVERVIEW

This supplementary guide will walk through the details of installing Calypso software and service packs, as well as licensing procedures for PC's connected the internet and PC's with no internet connection available.

Janak, Nick

Applications Engineer

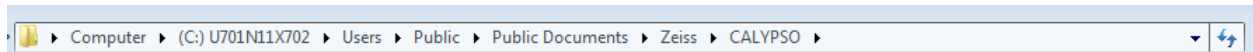
Carl Zeiss Industrial Metrology, LLC

2/17/2017

Software Install: Supplementary Guide

Note: If you DO NOT have a previously installed version of Calypso, please begin the installation process with Step 12.

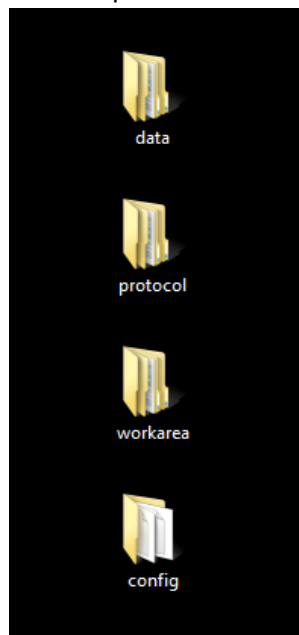
- 1.) Before a new version of Calypso is installed, it is important to backup the files from the previous installation.
- 2.) These files can be located by navigating to the following file path.
 - a. Note: The 'CALYPSO' file may be followed by a version number if there are parallel installations on the PC. For example, there may be a CALYPSO 6.0 file if you have previously installed Calypso 2015 in parallel with an earlier version.



- 3.) Within this file directory you will find the following folders. There will be additional files located here, but our concern lies with the folders below.

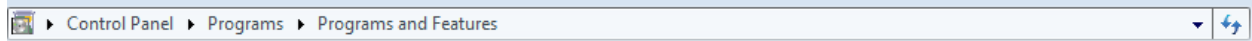
cad	2/1/2017 9:05 AM	File folder
config	2/1/2017 9:12 AM	File folder
data	2/1/2017 9:05 AM	File folder
hotline	2/14/2017 3:11 PM	File folder
log	2/1/2017 9:12 AM	File folder
om	2/1/2017 9:05 AM	File folder
protocol	2/1/2017 9:05 AM	File folder
weprom	2/1/2017 9:05 AM	File folder
workarea	2/10/2017 3:55 PM	File folder

- 4.) Make backup copies of the config, data, protocol, and workarea folders.
- 5.) Place these folders either on the desktop or in an easily retrievable location. In this reference guide, the folders were copied to the desktop.

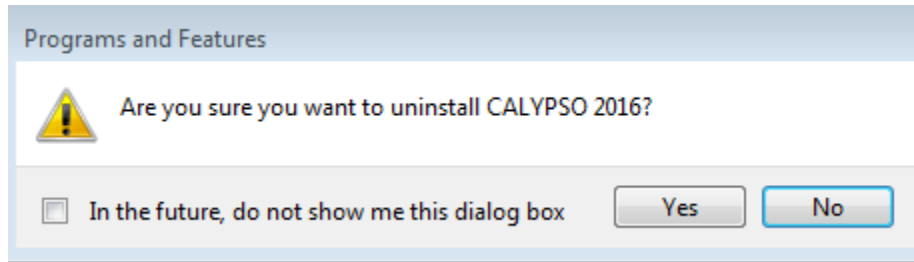


6.) Now, to uninstall the previous version of Calypso, navigate to the Control Panel.

7.) Navigate to: Control Panel → Programs → Programs and Features

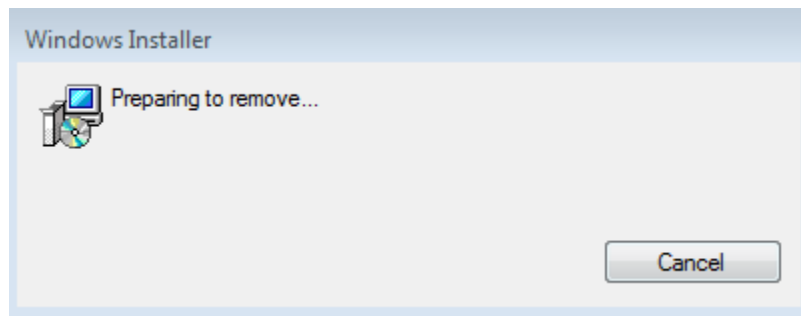
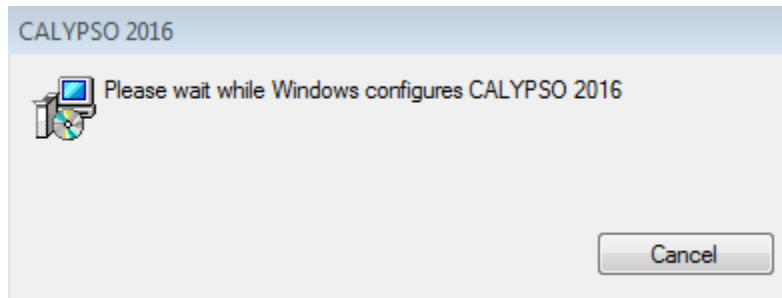


8.) Select the previous version of Calypso and select 'Uninstall'



9.) You will be prompted to confirm that you want to uninstall the program.

10.) Windows will then begin an uninstall routine and you will see the following windows appear during the uninstall process.



11.) The windows (above) will close automatically when the uninstall process is completed.

*****Begin here if you DO NOT have a previously installed version of the Calypso software*****

12.) Insert CALYPSO DVD into the disc drive and view files on the disc.

CALYPSO_2016 DVD 6.2.0400

13.) Right click on 'CALYPSO.exe' and select 'Run as Administrator'.

Name	Date modified	Type	Size
CALYPSO	8/8/2016 9:15 AM	File folder	
CFS	8/8/2016 9:15 AM	File folder	
FlexReporting	8/8/2016 9:15 AM	File folder	
Info	8/8/2016 9:15 AM	File folder	
LineScan	8/8/2016 9:15 AM	File folder	
Metrotom	8/8/2016 9:15 AM	File folder	
NZDI	8/8/2016 9:15 AM	File folder	
Presetmodul	8/8/2016 9:15 AM	File folder	
ROTOS	8/8/2016 9:15 AM	File folder	
Tools	8/8/2016 9:15 AM	File folder	
ViScan	8/8/2016 9:15 AM	File folder	
ZEISS SES Viewer	8/8/2016 9:15 AM	File folder	
autorun.inf	10/27/2003 8:28 AM	Setup Information	1 KB
CALYPSO.exe	6/24/2016 6:42 AM	Application	99 KB
CALYPSO.exe.config	6/28/2016 8:58 AM	CONFIG File	60 KB
calypso.ico	6/18/2008 5:11 AM	Icon	265 KB

14.) Running this executable will generate the following interface where you can now select the desired language for the installation process. Language selection from German (DE), English (EN), and Japanese (JA). After selecting the desired language, select 'Install' from the list of button options on the left-hand side of the window.

ZEISS CALYPSO 2016

Version 6.2.04



Carl Zeiss Industrielle Messtechnik GmbH



15.) Selecting 'Install' will bring up the following window. From here, select 'CALYPSO'.

ZEISS CALYPSO 2016

Version 6.2.04

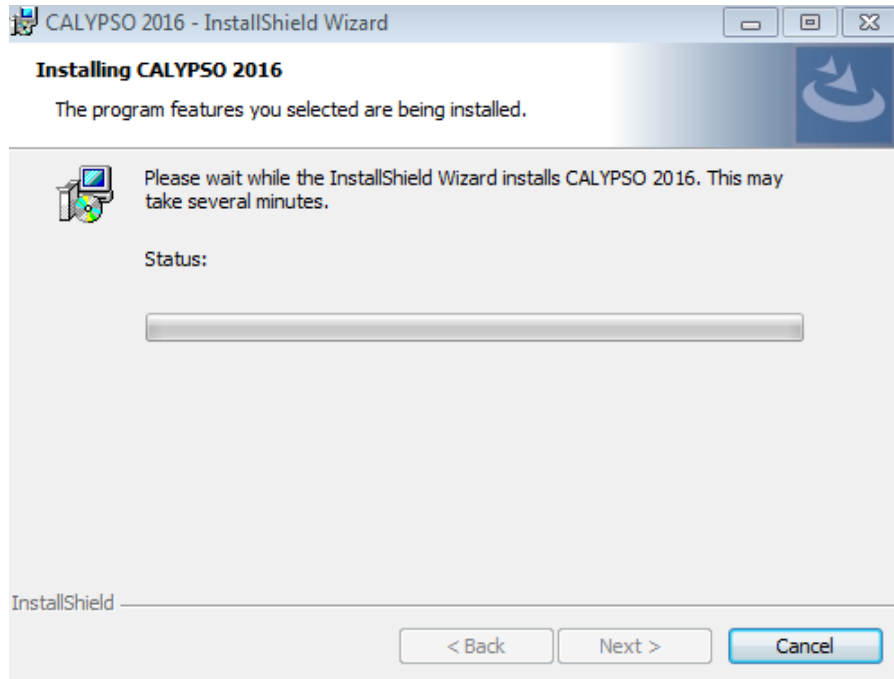


Carl Zeiss Industrielle Messtechnik GmbH

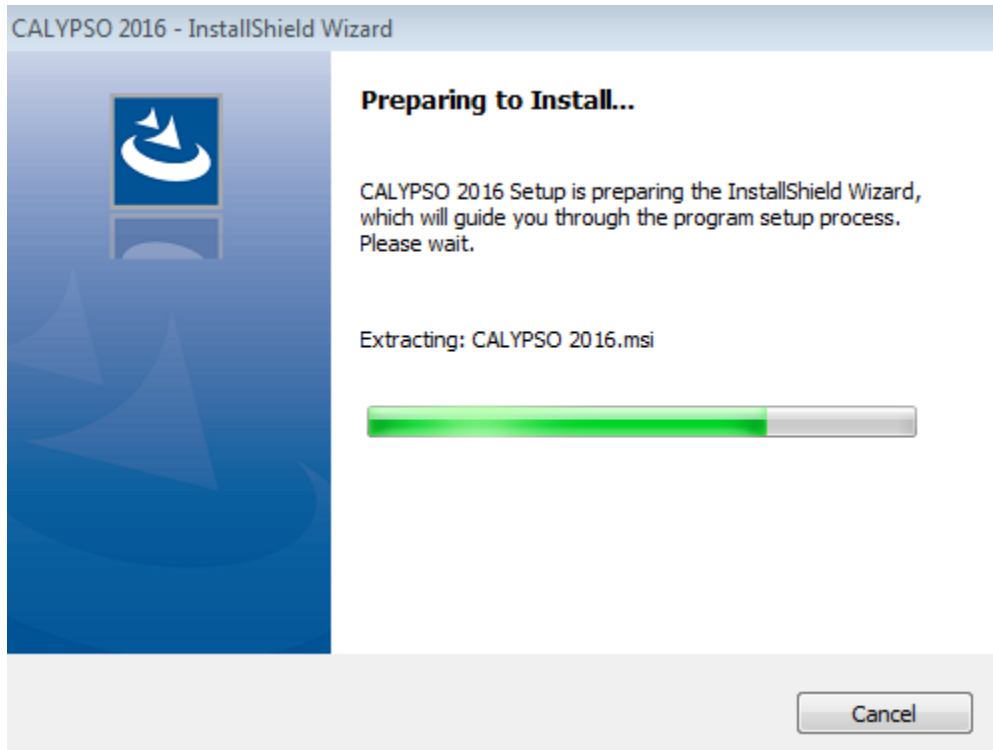
Install

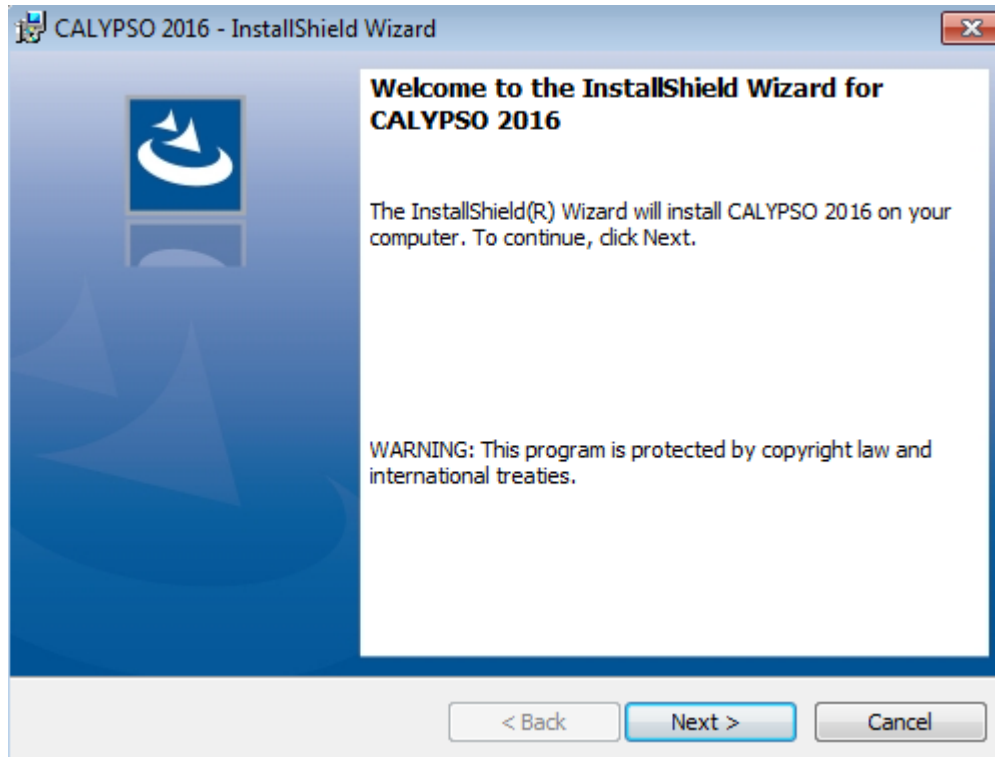
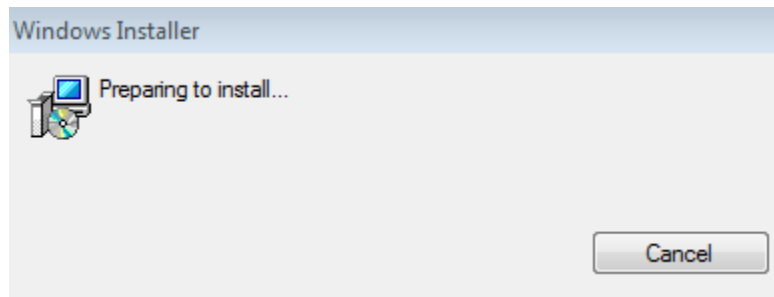


- 16.) After selecting 'CALYPSO', Windows InstallShield Wizard will come up to begin the installation. This window may take several minutes to compute space requirements and other prerequisites required for installation. Allow this to finish and then click 'Next'.



- 17.) InstallShield Wizard will then prepare to install Calypso. You will see the following windows appear on the screen. Allow these to finish, and then click 'Next'.

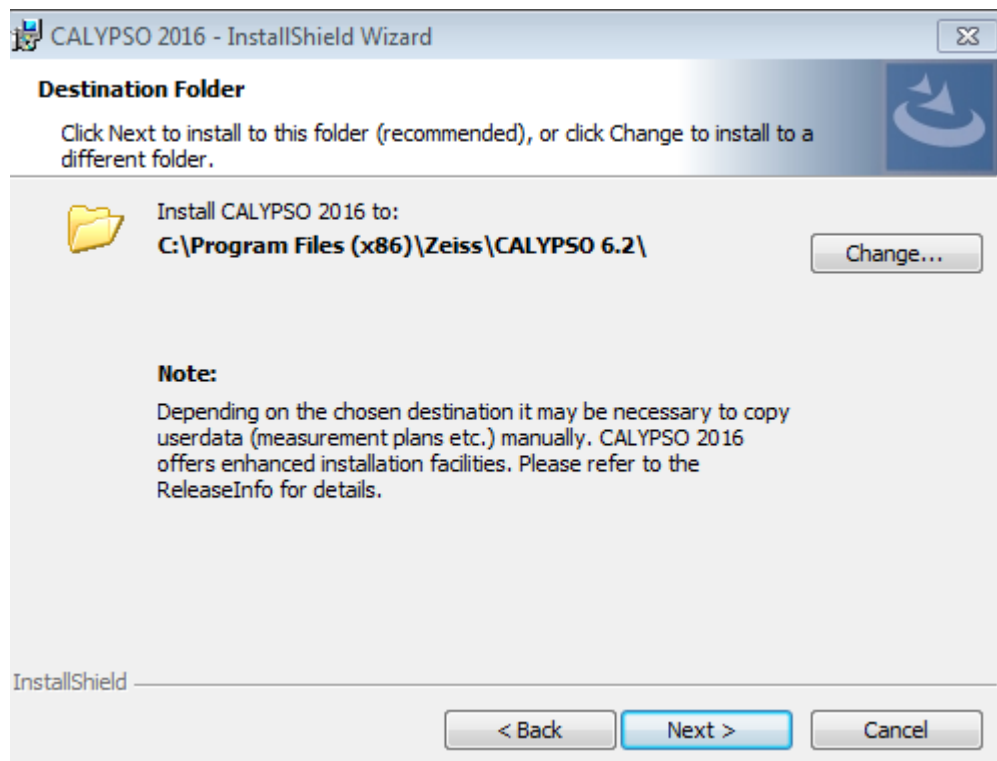




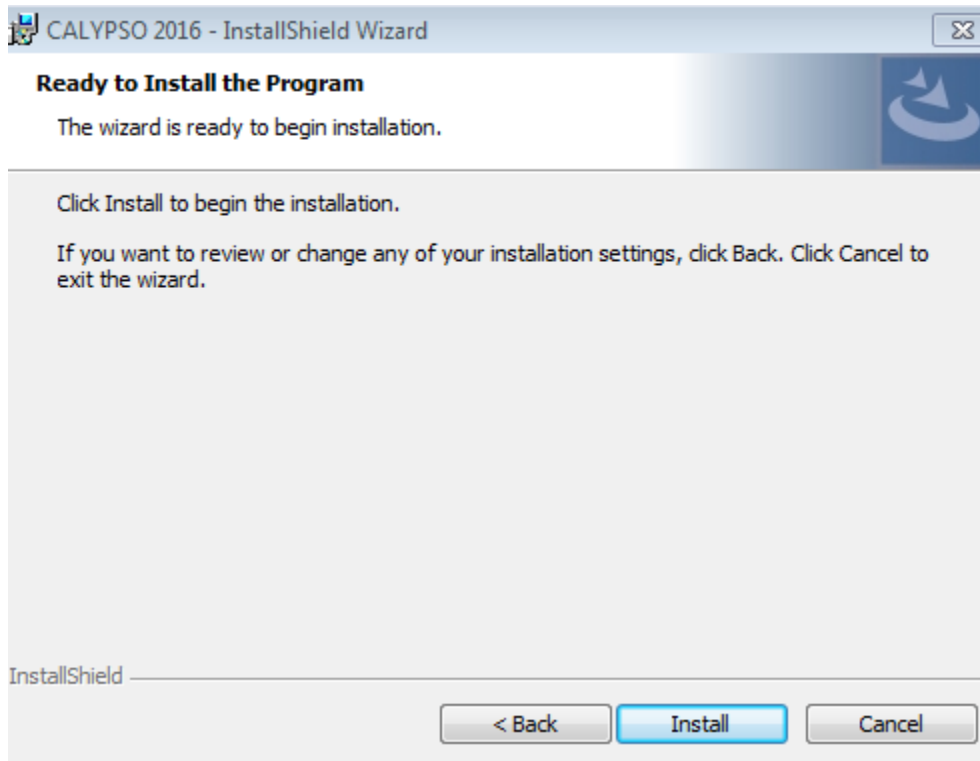
- 18.) Next you will be prompted to agree to the terms and conditions of our licensing agreement.
- 19.) Select 'I accept the terms in the license agreement' and then click 'Next'.



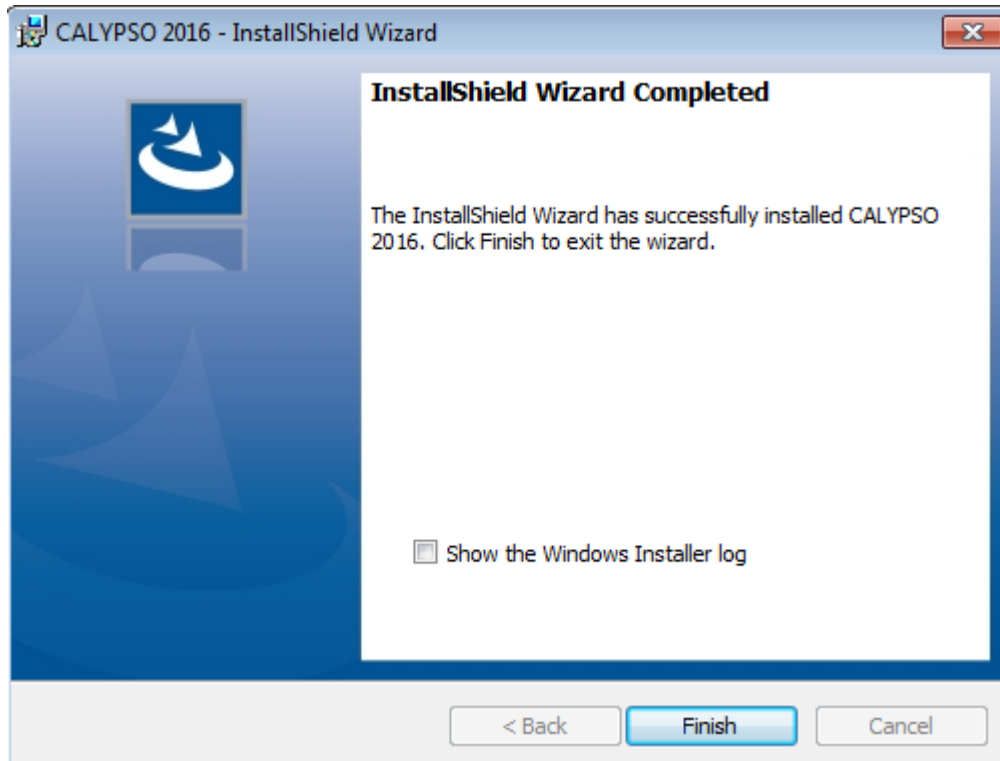
20.) You will now be prompted to select the desired location for which you want to install Calypso. (In general, most people will install to the default location.) Then click 'Next'.












21.) Select 'Install'.



22.) Select 'Finish'.



- 23.) You have now successfully installed Calypso.
- 24.) If you are upgrading from a previous version, it is important to replace the newly generated folders with the folders backed up in Steps 4 & 5.
- 25.) Rename the newly generated config, data, protocol, and workarea folders. (In this example, the newly generated folders are renamed using an ‘_old’ naming convention.)

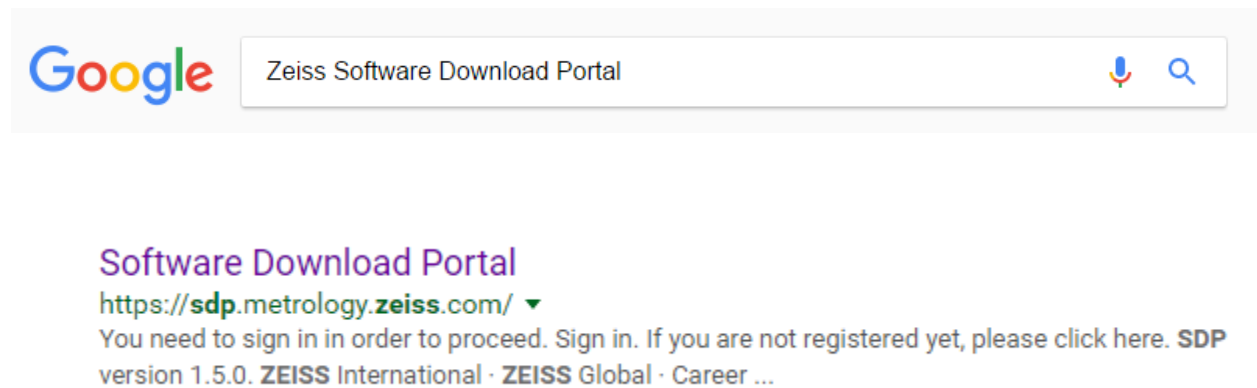
 cad	2/1/2017 9:05 AM	File folder
 config_old	2/1/2017 9:12 AM	File folder
 data_old	2/1/2017 9:05 AM	File folder
 hotline	2/14/2017 3:11 PM	File folder
 log	2/1/2017 9:12 AM	File folder
 om	2/1/2017 9:05 AM	File folder
 protocol_old	2/1/2017 9:05 AM	File folder
 weprom	2/1/2017 9:05 AM	File folder
 workarea_old	2/10/2017 3:55 PM	File folder

- 26.) Place the backup copies of config, data, protocol, and workarea into the newly created directory. See below.
 - a. Note: This is the same file path as Step 2.
- 27.) Following the replacement of files, the newly installed version of Calypso will now have information from the previous version of Calypso such as inspection plans, machine tabs, stylus data, excel reports, header information, etc.

With every version of Calypso that is released, there are also additional Service Packs which contain bug fixes. Service Packs are released iteratively throughout the year and can be downloaded from the Zeiss Software Download Portal (SDP), or received through the mail with an active Software Maintenance Agreement (SMA).

[Service Pack Install \(From Software Download Portal\):](#)

- 1.) Navigate to the Zeiss Software Download Portal using an internet browser.



The screenshot shows a Google search interface. The search bar contains the text "Zeiss Software Download Portal". Below the search bar, the search results for "Software Download Portal" are displayed. The first result is a link to "https://sdp.metrology.zeiss.com/" with a dropdown arrow. Below the link, there is a message: "You need to sign in in order to proceed. Sign in. If you are not registered yet, please click here. SDP version 1.5.0. ZEISS International · ZEISS Global · Career ...".

2.) Either sign in if you are an existing user, or create a new user account.



Software Download Portal

Authentication required

You need to sign in in order to proceed.

[Sign in](#)

If you are not registered yet, please [click here](#).

3.) Click on the text '> go to ZEISS Software Download Portal'. See below.

ZEISS Metrology Portal



ZEISS Software Download Portal

In the ZEISS Software Download Portal you can download all available versions of ZEISS Metrology software products.

[> go to ZEISS Software Download Portal](#)

- 4.) Select the Product group, Version, and Type. A file to download will show up near the bottom of the page. Click on the file and select 'Download'.

Software Download Portal

Product group


Version

Type

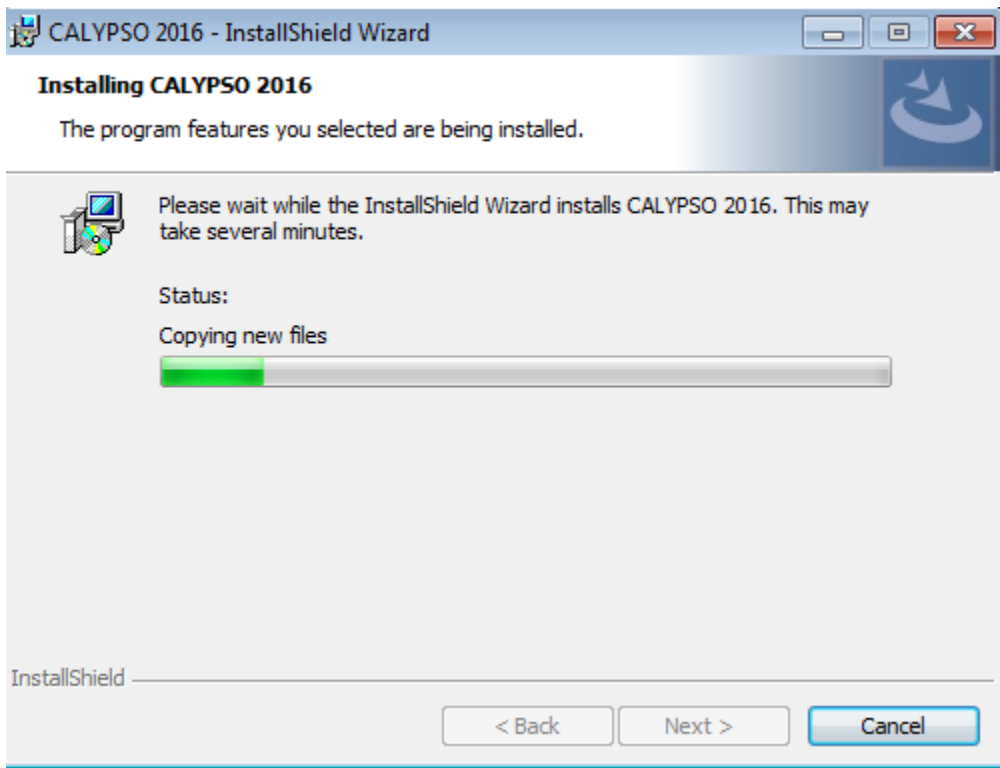
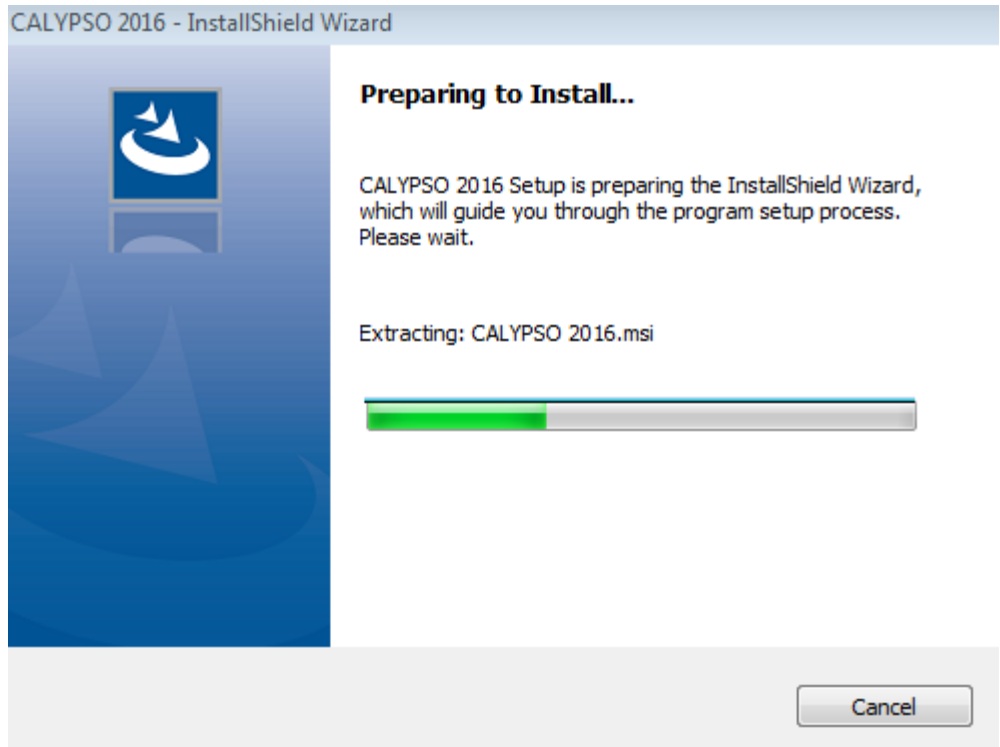
Filename	Size
 ZEISS CALYPSO 2016 Service Pack 6.2.12.00.zip	3.04 GB

- 5.) Download and unzip the file.

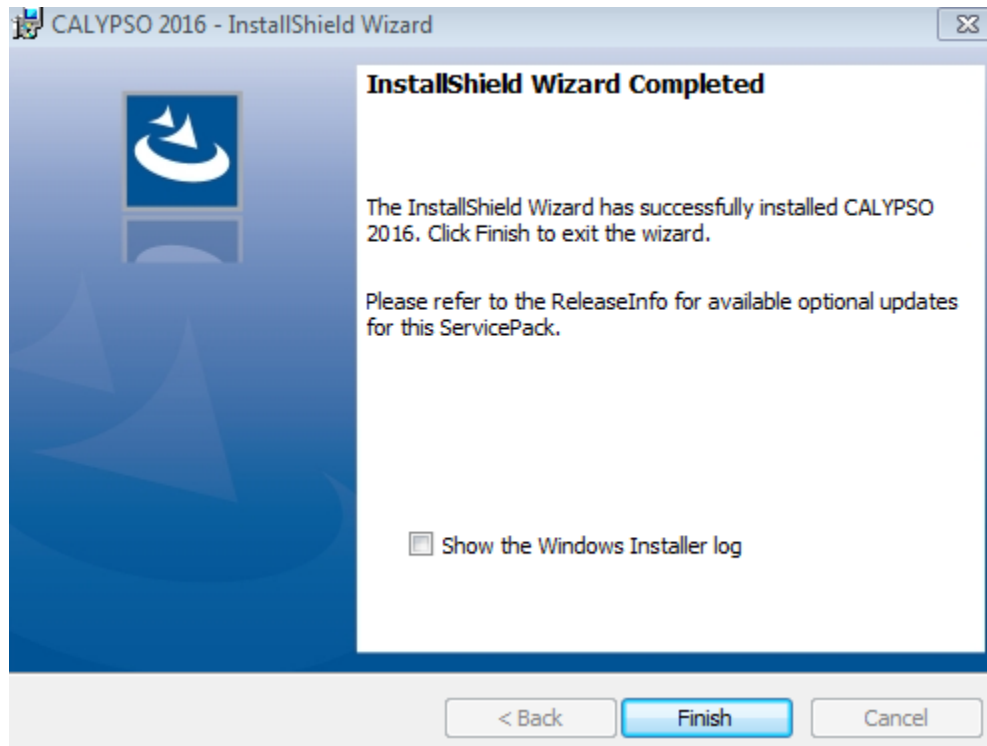
- 6.) Select the following executable for a 64-bit Operating System.
- Note: An executable will also be available for 32-bit Operating Systems.
 - It can be found in the contents of the zip file.

 CALYPSO2016_SP621200_64Bit_Setup.exe	12/14/2016 12:41 ...	Application	1,310,479 KB
--------------------------------------------------------------------------------------------------------------------------	----------------------	-------------	--------------

- 7.) Run the executable required for your PC's operating system.
- If you do not know whether your PC is a 32-bit or 64-bit operating system, you can check by navigating to Control Panel → System and Security → System.
- 8.) After running the appropriate executable, Windows InstallShield Wizard will appear and begin to prepare for the installation (Similar to Step 17 from the base installation above). Click 'Next'.

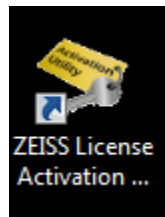


9.) Select 'Finish'. The windows will go away upon completion of the Service Pack installation.

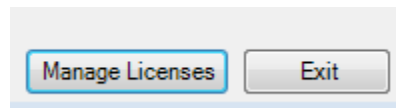


Licensing Procedure:

1.) Following the installation of Calypso, there will be a ZEISS License Activation Utility 64 icon allocated to the desktop. Double click this icon to open the license manager.

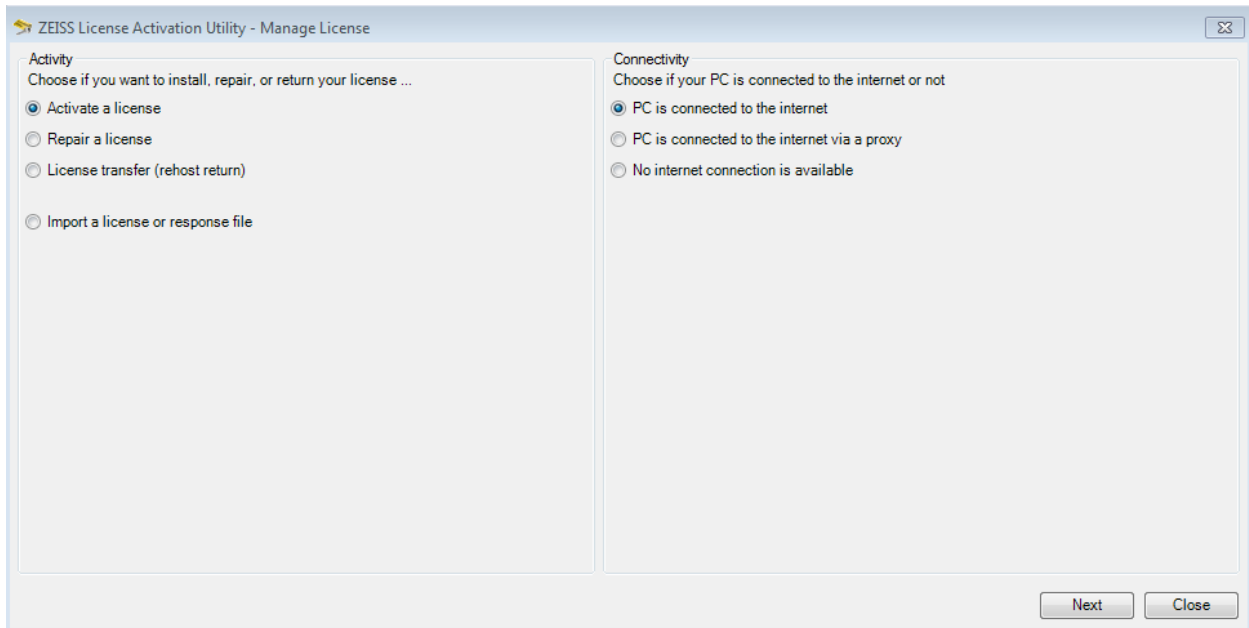


2.) While in the license manager, you may notice that there are no licenses available for this installation. Navigate to the lower right hand corner of this window and you will see 'Manage Licenses'. Click on 'Manage Licenses'.

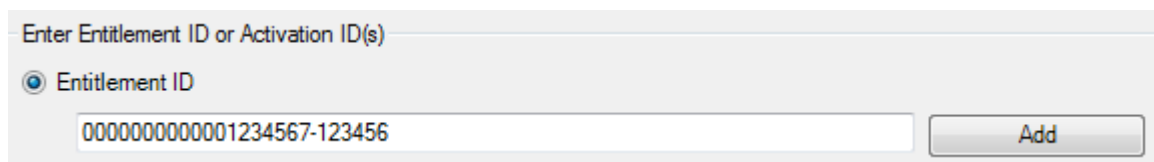
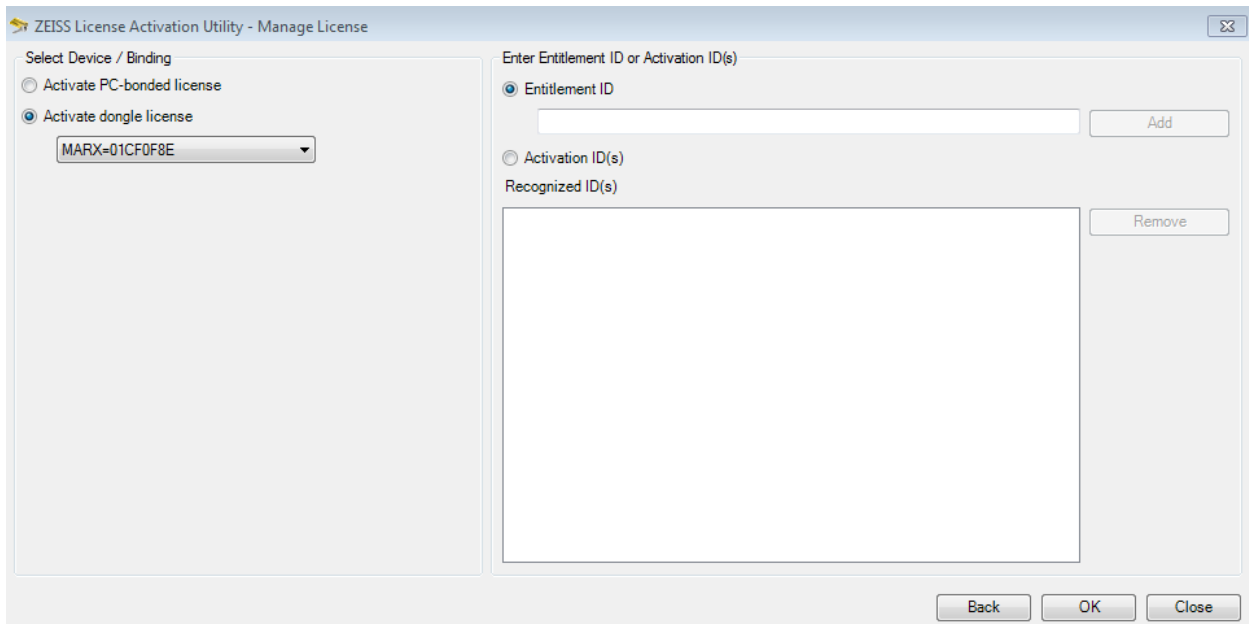


3.) If you are connected to the internet, select 'Activate a license' and 'PC is connected to the internet'.

4.) If no internet connection is available, select 'Activate a license' and 'No internet connection is available'.



- 5.) Select whether your license is PC-bonded or a dongle license.
- 6.) On the Licensing disc received in the mail, you will see a file titled 'EntitlementCertificate.html'
- 7.) Open this file with a web browser.
- 8.) Copy and paste the Entitlement ID from the Entitlement Certificate (See below).
 - a. Be sure that there are no spaces included before or after the Entitlement ID number when copying and pasting this value.



- 9.) If no internet connection is available, follow the steps above, but now this process will generate a file titled *activation_request.xml*
- 10.) Save this file to a convenient location or removable memory device to be retrieved on a PC that is connected to the internet.
- 11.) Send the *activation_request.xml* file to license.metrology.de@zeiss.com
 - a. Note: No subject line is needed, as this is an automated response system.
- 12.) You will receive an email from the aforementioned email address containing a license file (.lic)
- 13.) Return to Step 4 of the licensing procedure and select 'Import a license or response file'.
- 14.) Select the license file from wherever you had saved it after receiving the email, and select 'Open'. Then click 'Next'.
- 15.) The license file will then be imported.
- 16.) You can now select 'Back' and see that the ZEISS License Activation Utility window is now populated with available license.

For further assistance and support please contact the Zeiss Software Helpdesk.

Phone: 1-800-327-9735

Email: calypso@zeiss.com