

**ZEISS**  
**PiWeb Reporting Plus**

Inspection ConnectSegments  
 DrawingNo  
 Type  
 Process  
 MiniPlan All Characteristics

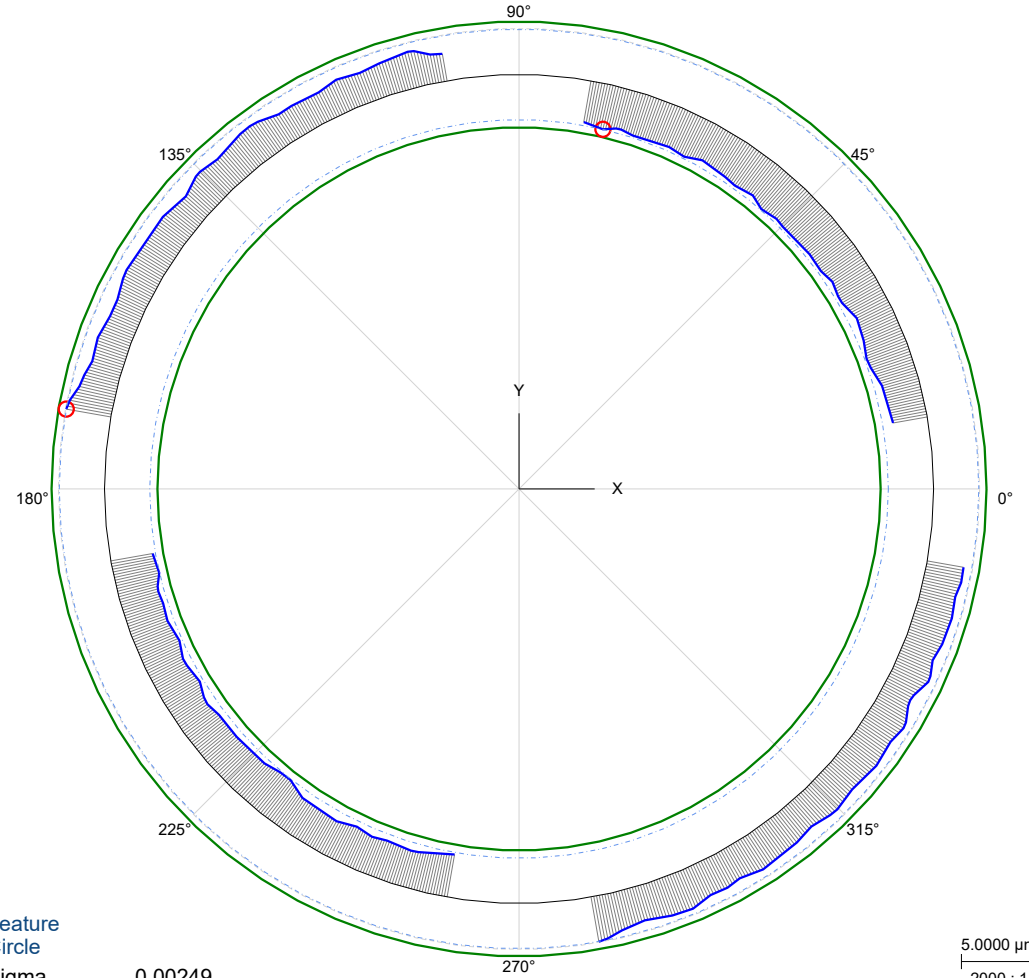
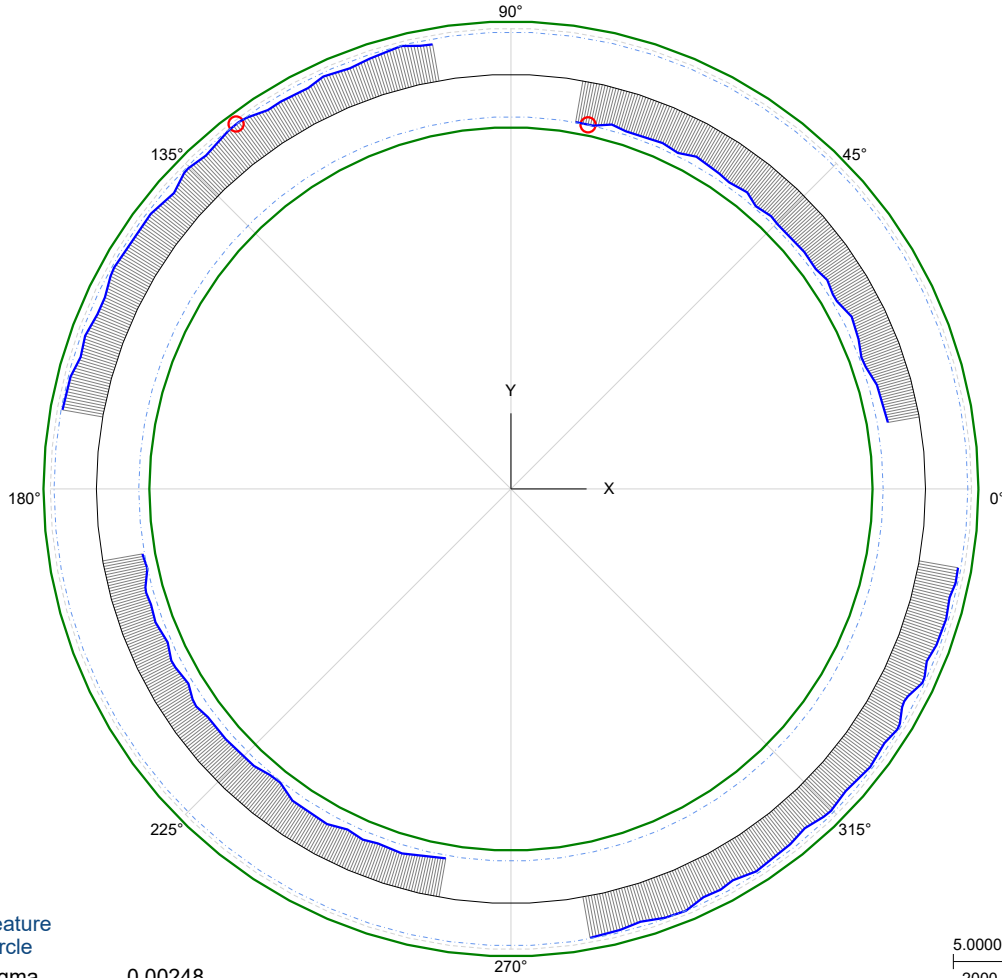
OrderNo  
 PartNo 26  
 Dummy  
 Dummy  
 Info

Plant CZ IMT GmbH  
 Mach-No  
 Customer  
 CostCenter  
 Deprmt IS-AP  
 Date 9/6/2019 10:13 AM  
 CMM-No 000000  
 CMM-Type Prismo  
 MPEe =  
 Worker Master

Roundness Filter GAUSS 50

2-Round\_F\_noCoSegm\_50

3-Round\_F\_CoSegm\_50



Feature Circle  
 Sigma 0.00248  
 Stylus-Ø 1.50000  
 Vs[mm/sec]

5.0000 µm  
 2000 : 1

Feature Circle  
 Sigma 0.00249  
 Stylus-Ø 1.50000  
 Vs[mm/sec]

5.0000 µm  
 2000 : 1

Name	Comment	Actual	Tolerance	Evaluation method	USG	OSG	Min	Max	Points	Filter type	Lc	W/R
2-Round_F_noCoSegm_50	Lambda = 3.142	0.00560	0.00700	Minimum Feature	-0.00350	0.00350	-0.00280	0.00280	720	Low-pass Gauss	-	50 -
3-Round_F_CoSegm_50	Lambda = 3.142	0.00598	0.00700	Minimum Feature	-0.00350	0.00350	-0.00299	0.00299	720	Low-pass Gauss	-	50 -



Inspection ConnectSegments  
 DrawingNo  
 Type  
 Process  
 MiniPlan All Characteristics

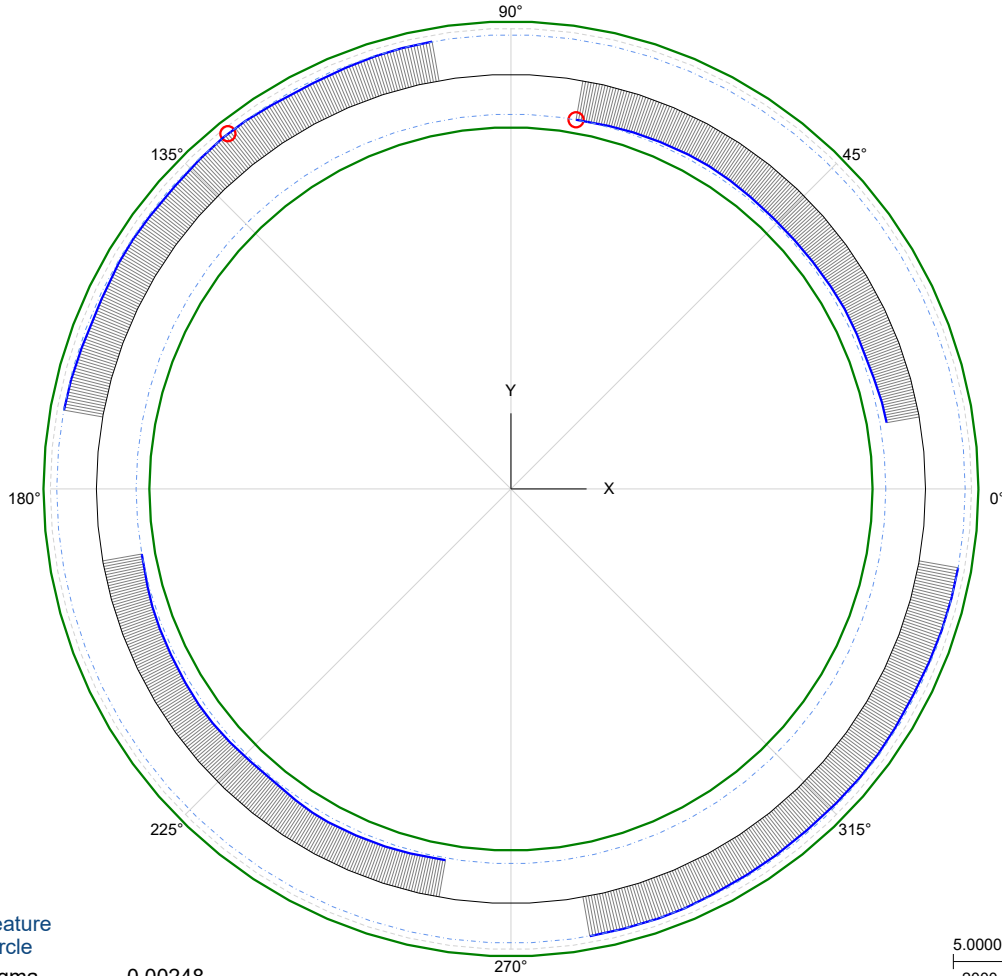
OrderNo  
 PartNo 26  
 Dummy  
 Dummy  
 Info

Plant CZ IMT GmbH  
 Mach-No  
 Customer  
 CostCenter  
 Deprmt IS-AP  
 Date 9/6/2019 10:13 AM  
 CMM-No 000000  
 CMM-Type Prismo  
 MPEe =  
 Worker Master

Roundness Filter GAUSS 15

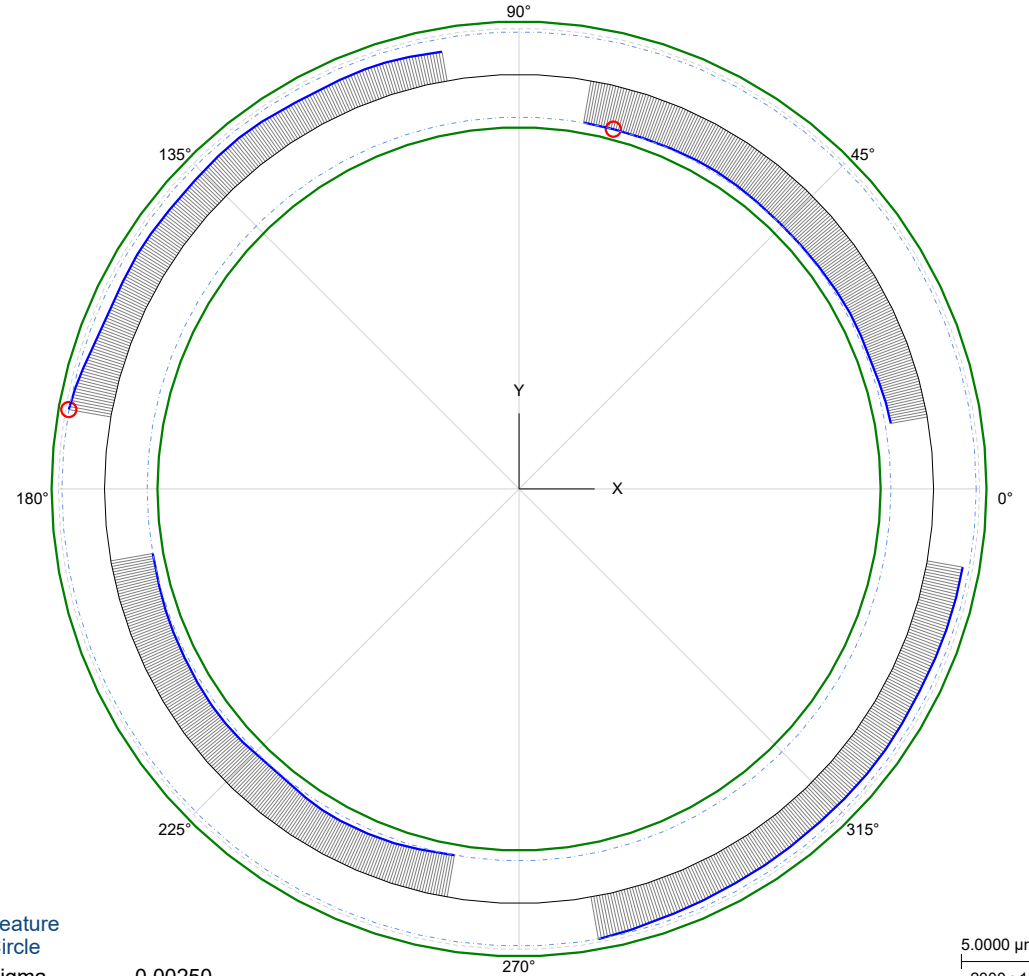
2-Round\_F\_noCoSegm\_15

3-Round\_F\_CoSegm\_15



Feature Circle  
 Sigma 0.00248  
 Stylus-Ø 1.50000  
 Vs[mm/sec]

5.0000 μm  
 2000 : 1



Feature Circle  
 Sigma 0.00250  
 Stylus-Ø 1.50000  
 Vs[mm/sec]

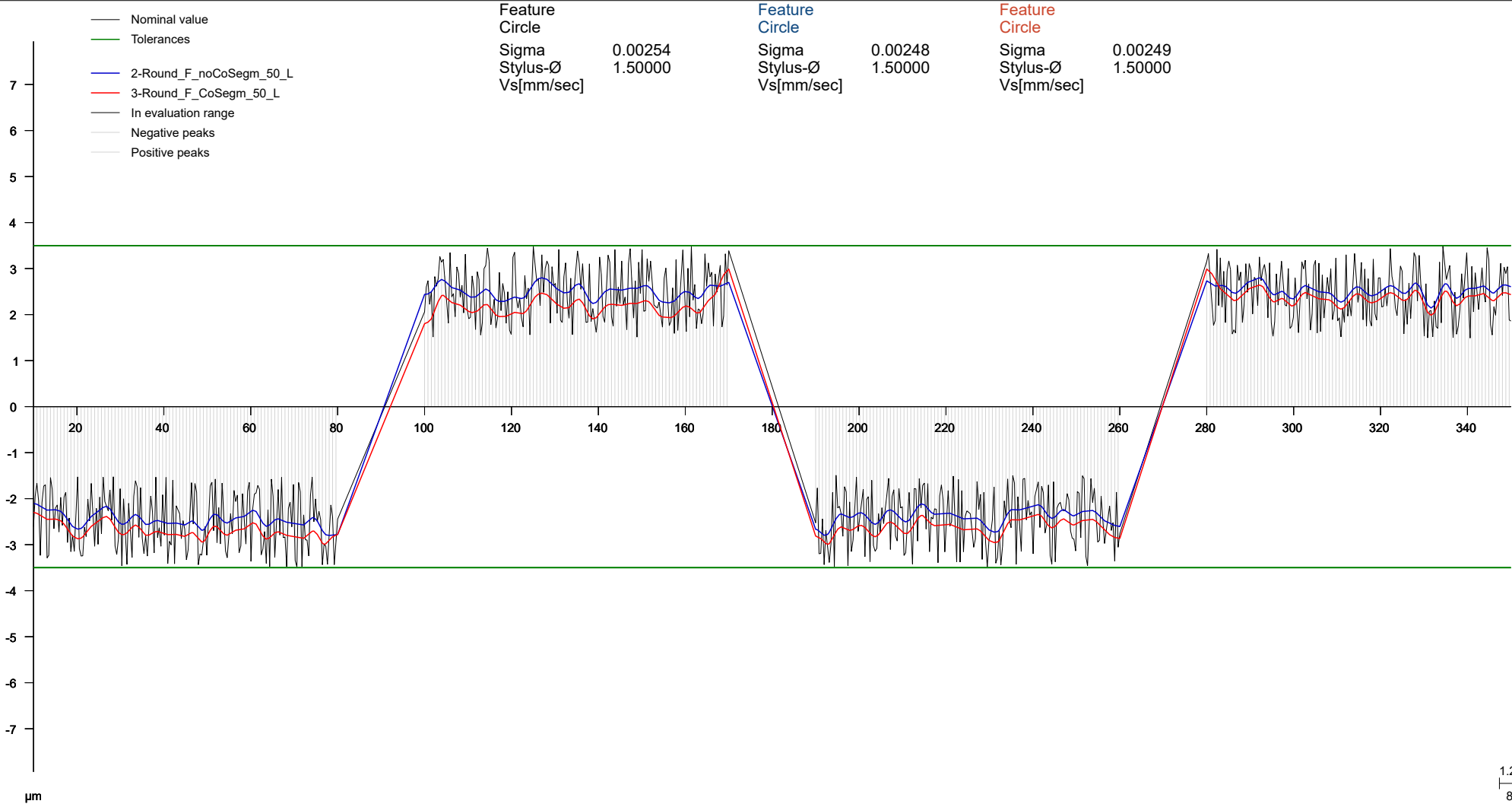
5.0000 μm  
 2000 : 1

Name	Comment	Actual	Tolerance	Evaluation method	USG	OSG	Min	Max	Points	Filter type	Lc	W/R
2-Round_F_noCoSegm_15	Lambda = 10.472	0.00525	0.00700	Minimum Feature	-0.00350	0.00350	-0.00262	0.00262	720	Low-pass Gauss	-	15 -
3-Round_F_CoSegm_15	Lambda = 10.472	0.00564	0.00700	Minimum Feature	-0.00350	0.00350	-0.00282	0.00282	720	Low-pass Gauss	-	15 -



# PiWeb Reporting Plus

Inspection	ConnectSegments	OrderNo	Plant	CZ IMT GmbH	Date	9/6/2019 10:13 AM	
DrawingNo		PartNo	Mach-No		CMM-No	000000	
Type		Dummy	Customer		CMM-Type	Prismo	
Process		Dummy	CostCenter		MPEe =		
Roundness Filter GAUSS 50 linear	MiniPlan	All Characteristics	Info	Deprmt	IS-AP	Worker	Master



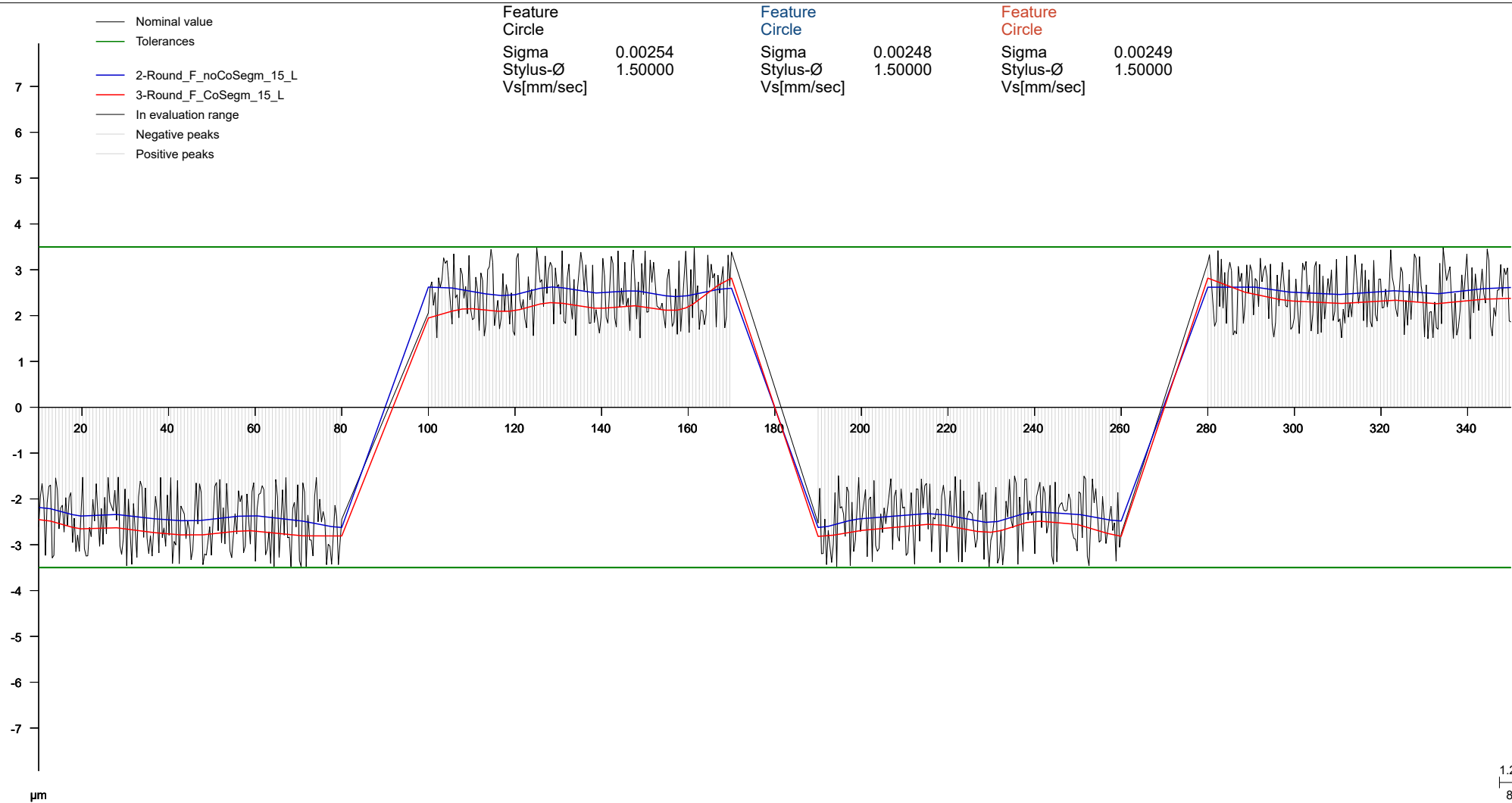
1.2500 µm  
8000 : 1

Name	Comment	Actual	Tolerance	Evaluation method	USG	OSG	Min	Max	Points	Filter type	Lc	W/R
1-Roundness		0.00696	0.00700	Minimum Feature	-0.00350	0.00350	-0.00348	0.00348	720	No Filter	-	-
2-Round_F_noCoSegm_50_L	Lambda = 3.142	0.00560	0.00700	Minimum Feature	-0.00350	0.00350	-0.00280	0.00280	720	Low-pass Gauss	-	50 -
3-Round_F_CoSegm_50_L	Lambda = 3.142	0.00598	0.00700	Minimum Feature	-0.00350	0.00350	-0.00299	0.00299	720	Low-pass Gauss	-	50 -



# PiWeb Reporting Plus

Inspection	ConnectSegments	OrderNo		Plant	CZ IMT GmbH	Date	9/6/2019 10:13 AM
DrawingNo		PartNo	26	Mach-No		CMM-No	000000
Type		Dummy		Customer		CMM-Type	Prismo
Process		Dummy		CostCenter		MPEe =	
Roundness Filter GAUSS 15 linear	MiniPlan	All Characteristics	Info	Deprmt	IS-AP	Worker	Master



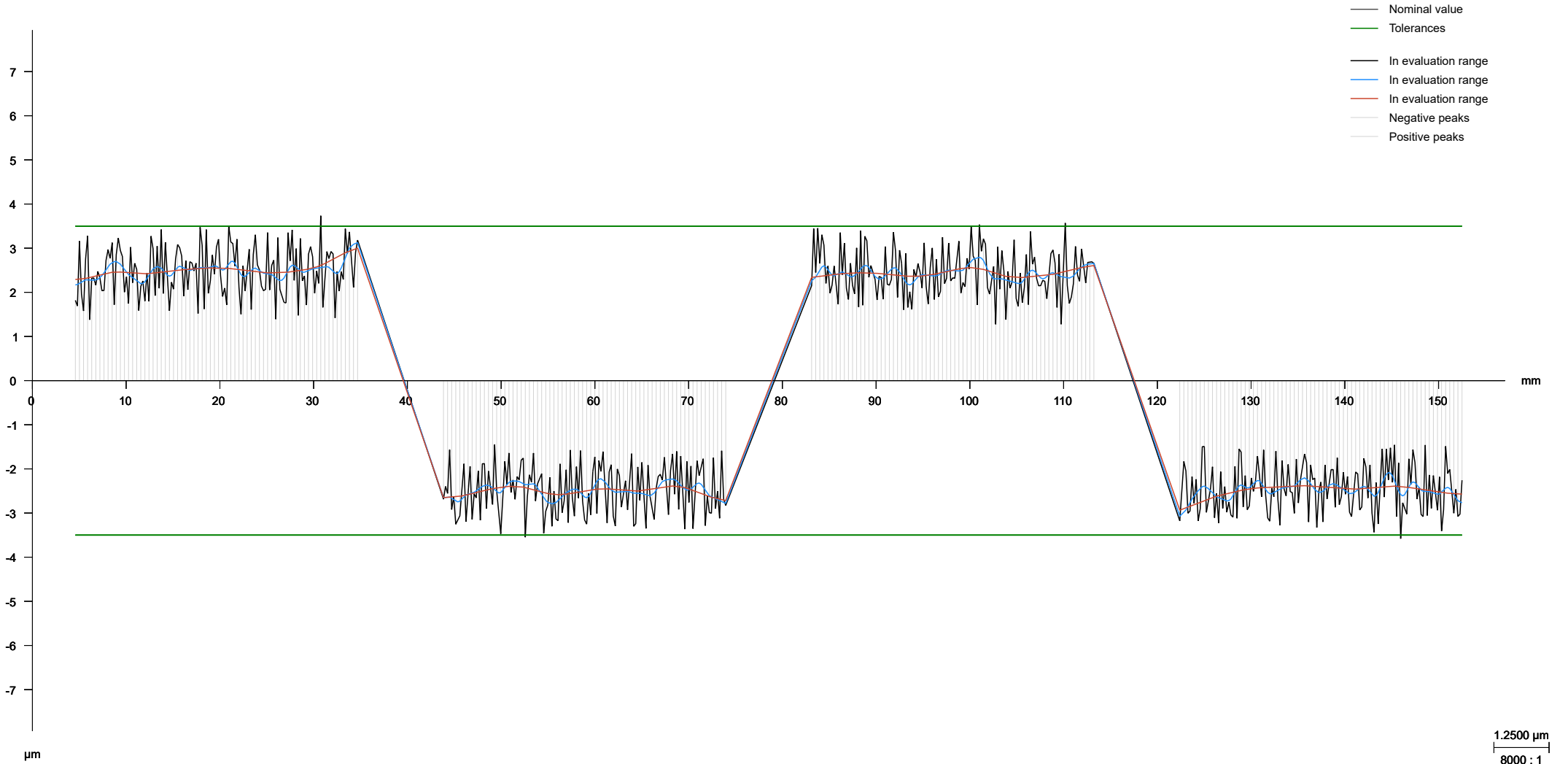
1.2500 µm  
8000 : 1

Name	Comment	Actual	Tolerance	Evaluation method	USG	OSG	Min	Max	Points	Filter type	Lc	W/R
1-Roundness		0.00696	0.00700	Minimum Feature	-0.00350	0.00350	-0.00348	0.00348	720	No Filter	-	-
2-Round_F_noCoSegm_15_L	Lambda = 10.472	0.00525	0.00700	Minimum Feature	-0.00350	0.00350	-0.00262	0.00262	720	Low-pass Gauss	-	15 -
3-Round_F_CoSegm_15_L	Lambda = 10.472	0.00564	0.00700	Minimum Feature	-0.00350	0.00350	-0.00282	0.00282	720	Low-pass Gauss	-	15 -



Inspection	ConnectSegments	OrderNo		Plant	CZ IMT GmbH	Date	9/6/2019 10:13 AM
DrawingNo		PartNo	26	Mach-No		CMM-No	000000
Type		Dummy		Customer		CMM-Type	Prismo
Process		Dummy		CostCenter		MPEe =	
MiniPlan	All Characteristics	Info		Deprmt	IS-AP	Worker	Master

Curves different Filter



Name	Comment	Actual	Tolerance	Evaluation method	USG	OSG	Min	Max	Points	Filter type	Lc
1-Curve Form		0.00731	0.00700	Nominal Vector Direction	-0.00350	0.00350	-0.00358	0.00373	556	No Filter	-
2-Curve Form F-50	Lambda = 3.142	0.00620	0.00700	Nominal Vector Direction	-0.00350	0.00350	-0.00307	0.00313	556	Low-pass Gauss	3.14 -
3-Curve Form F-15	Lambda = 10.472	0.00594	0.00700	Nominal Vector Direction	-0.00350	0.00350	-0.00294	0.00300	556	Low-pass Gauss	10.4 -