



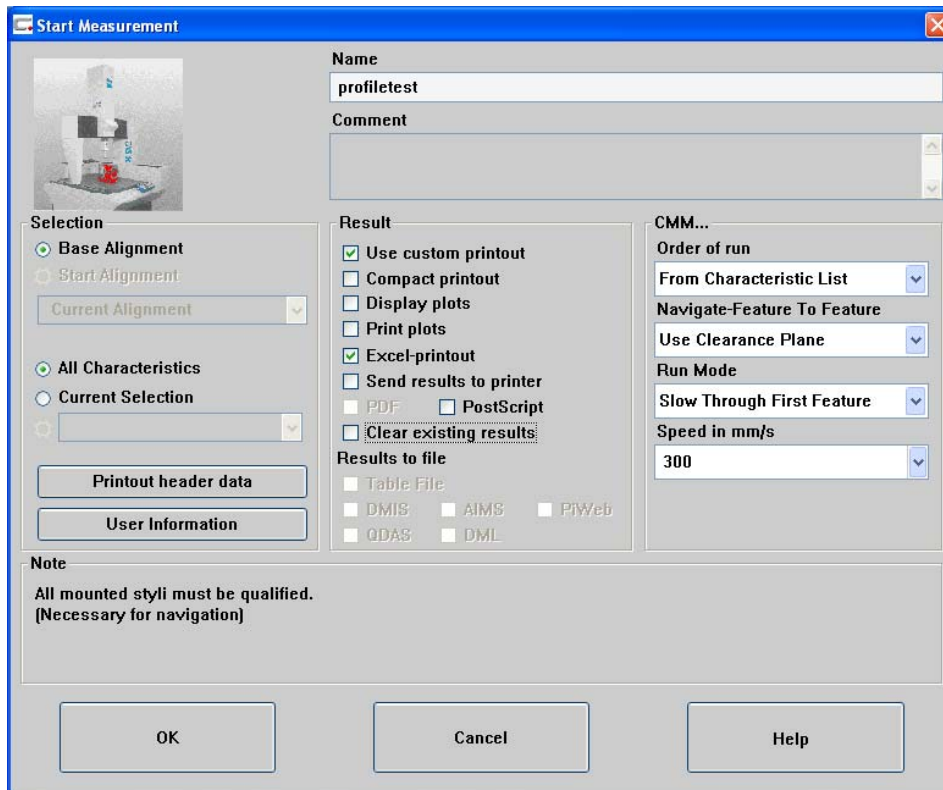
We make it visible.

User Information Feature

Calypso has a useful feature called "User Information" that allows the programmer who created the part program to include instructions for how the operator of the Coordinate Measurement Machine (CMM) should best measure the part with Calypso. Often times, these instructions can take the form of a text file, or a picture, or even a short video. This Calypso tip provides instructions for how to set up the User Information feature to be read by the CMM operator to facilitate the execution of your part program.

1. The first step is to create your instruction file. This could include directions on how the part is to be fixtured and aligned on the table, how to respond to programmed stops in the part program, how to identify a serial number or other labeling of the part for Calypso's measurement plan documentation, etc. Create the instructions with the software application of your choice: Microsoft Word, Notepad, Microsoft Paint, etc.
2. Next, open the measurement plan to which these instructions will be applied.
3. From the Plan menu, select **User Information** and **Select...**
4. Navigate to the path where the instruction file resides, and select the file. Click **Open** to finalize the selection.

This completes the setup. The next time a measurement plan is about to be executed, simply click on the **User Information** button in the CNC Start window.

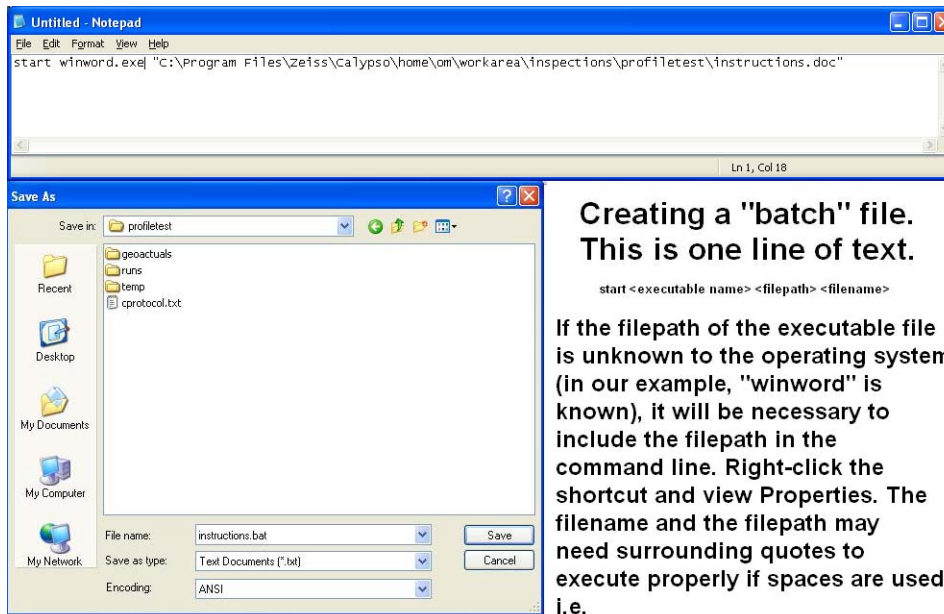


Calypso uses a program called CZViewer to select an application for opening the file, and this may not be the application of your choice. For example, CZViewer may open a file with a ".doc" file extension with WordPad and not with the preferred Microsoft Word. A trick to getting Calypso to open the file with your desired application is to create a simple batch file (*.bat) with one command line that

1. opens the executable file of the application of your choice, and
2. opens the file that you specify in that command line with the desired application.

For example, to open a Microsoft Word document, enter the following one line in a new Notepad file (Note: the word "start" is needed (without quotes); note the use of quotes for the filepath/filename):

```
start winword.exe "C:\Program Files\Zeiss\Calypso\home\om\workarea\inspections\profiletest\instructions.doc"
```



```
start "C:\Program Files\QuickTime\QuickTimePlayer.exe" "C:\Documents and Settings\admin\Deskto\instructions.mp4"
```

Here is a list of common executable files (paths are included where the operating system typically does not have the full filepath):

```
winword.exe  
excel.exe  
mspaint.exe  
notepad.exe  
"C:\Program Files\Windows Media Player\wmplayer.exe"  
"C:\Program Files\QuickTime\QuickTimePlayer.exe"
```

Now just specify the full name of the instructions file with the filepath. This instructions file can reside in any directory or network directory, and does not have to be within Calypso's path. If there are spaces in either the filepath or filename, enclose that name with quotes as shown.