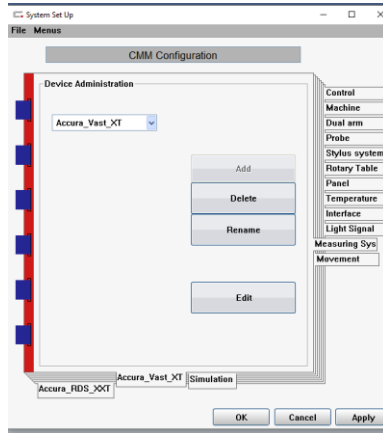
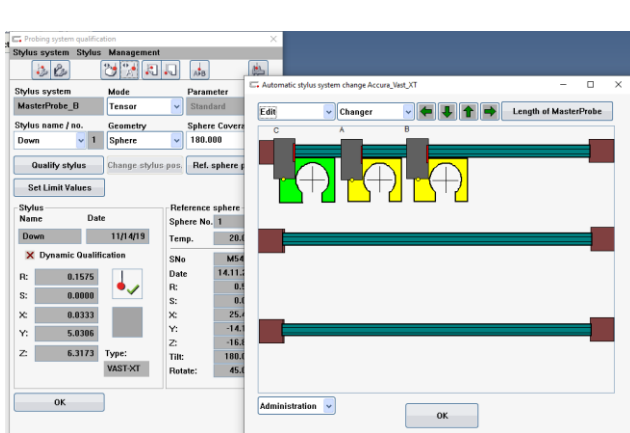
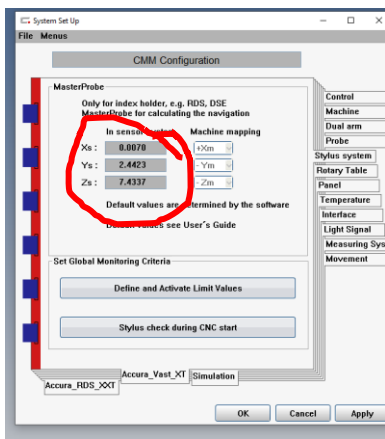


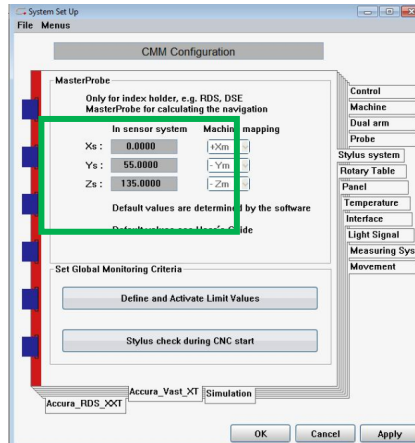
Zero Weight Master Probe



Holders Wiped Out !!



Unexpected (INCORRECT) Master Probe settings in CMM configuration
Other settings normal



Expected Master Probe settings



Message when attempt with Master Probe manually inserted before Initialize.

```

11/18/19 12:01:07 pm Accura_Vast_XT: Initializing
11/18/19 12:02:03 pm Accura_Vast_XT: 28 Nominal position not in measurement range - commands cancelled - risk of collision
11/18/19 12:02:05 pm CNC Disabled, Re-Initialize Control
11/18/19 12:02:05 pm Accura_Vast_XT: 28 Nominal position not in measurement range - commands cancelled - risk of collision
11/18/19 12:02:06 pm Accura_Vast_XT: 6 Command rejected, cancel (D99...) recognized
11/18/19 12:02:18 pm Accura_Vast_XT: CAA Correction active
11/18/19 12:02:18 pm Accura_Vast_XT: Temperature sensor with name for part active and in auto mode
11/18/19 12:02:18 pm Accura_Vast_XT: Temperature correction for the X axis will be processed internally
11/18/19 12:02:18 pm Accura_Vast_XT: Temperature correction for the Y axis will be processed internally
11/18/19 12:02:18 pm Accura_Vast_XT: Temperature correction for the Z axis will be processed internally
11/18/19 12:02:18 pm Accura_Vast_XT: Temperature stylus not available or inactive
11/18/19 12:02:18 pm Accura_Vast_XT: Temperature sensor for table does not exist or is ignored
11/18/19 12:02:18 pm Accura_Vast_XT: CMM Ready

```

