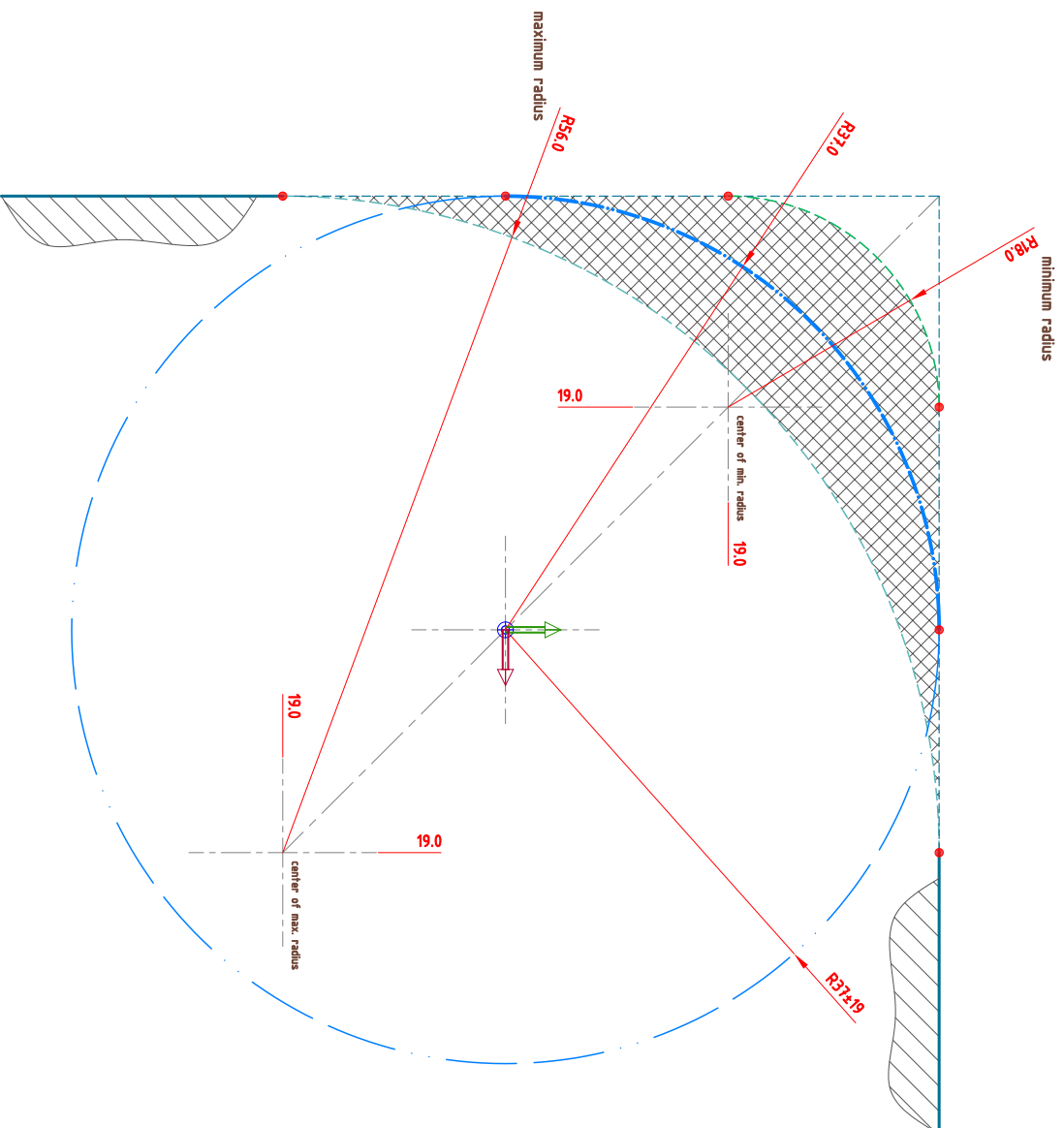


Radius definition

Two excentric arcs that illustrate the possible "edge-situation". They are not defining any tolerance-zone.



Pic. #1

Radius-Tolerance

Derived element

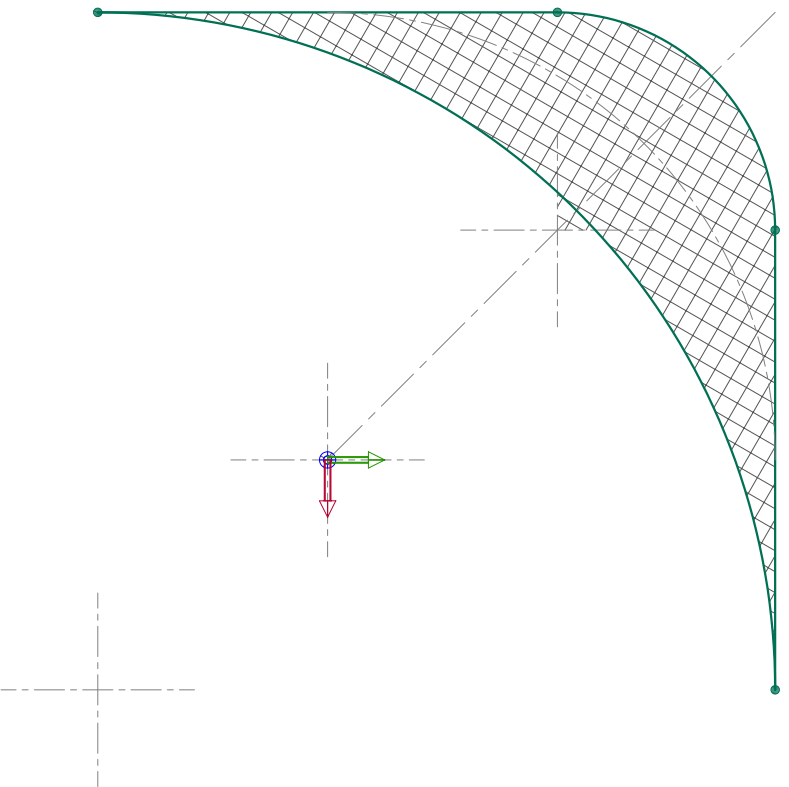
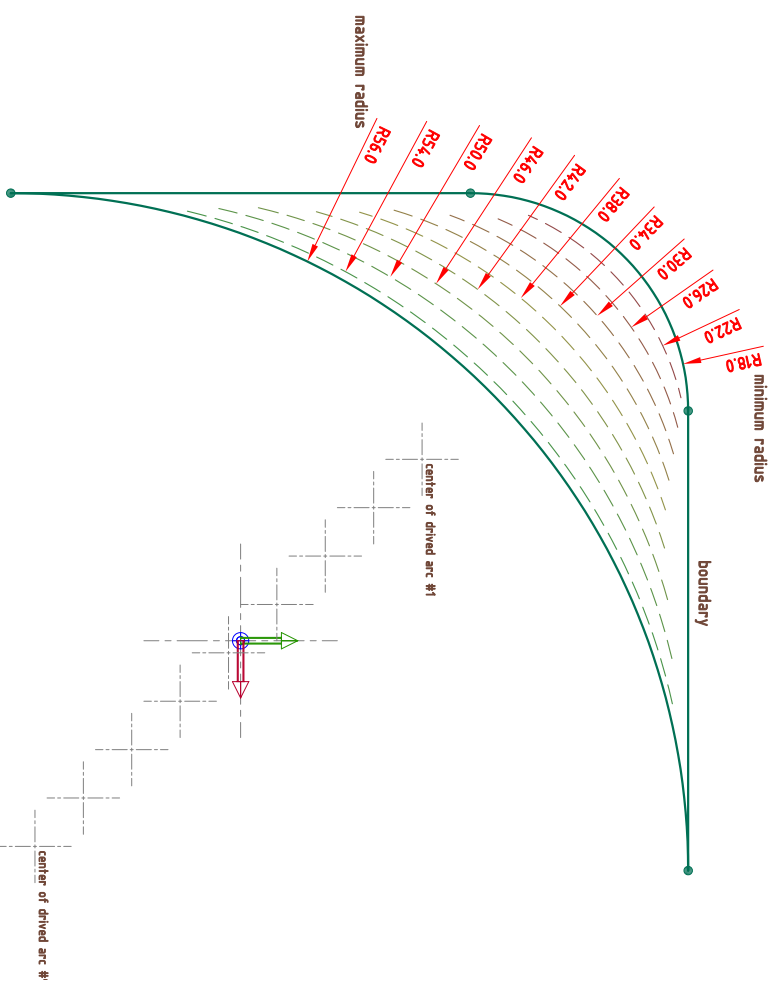


Illustration of 9 *derived* arcs that are located within the limits according to plot. The "boundary" does not have the character of a tolerance zone.

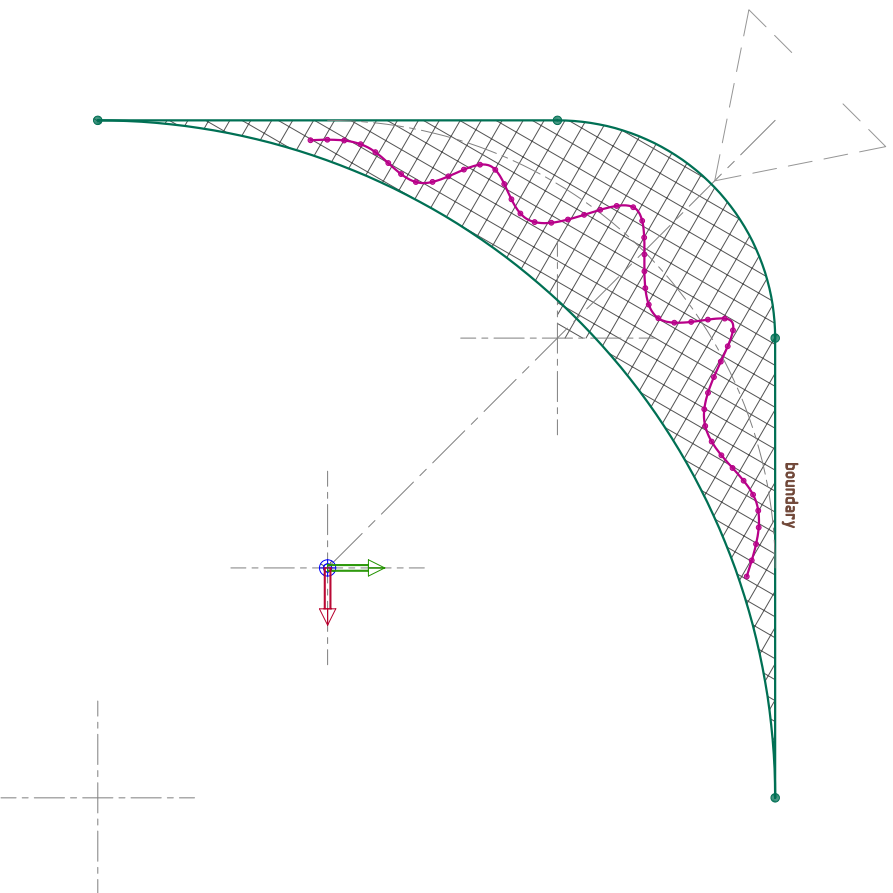


Pic. #2

Radius-Tolerance

Surface points 

The dashed zone *is not a tolerance zone.*
It is a means of illustration.



Pic. #3

The dashed zone *is a tolerance zone.*
It is defined by 2 concentric circles.

