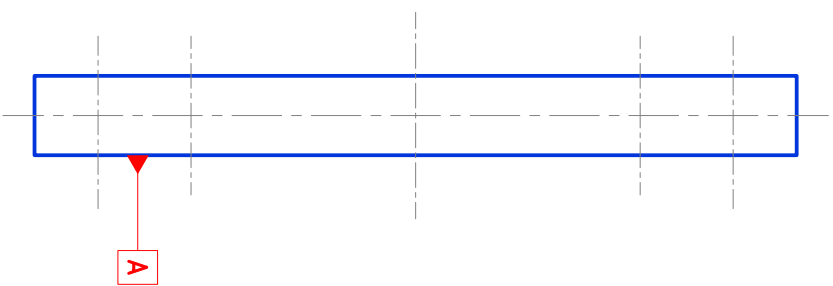
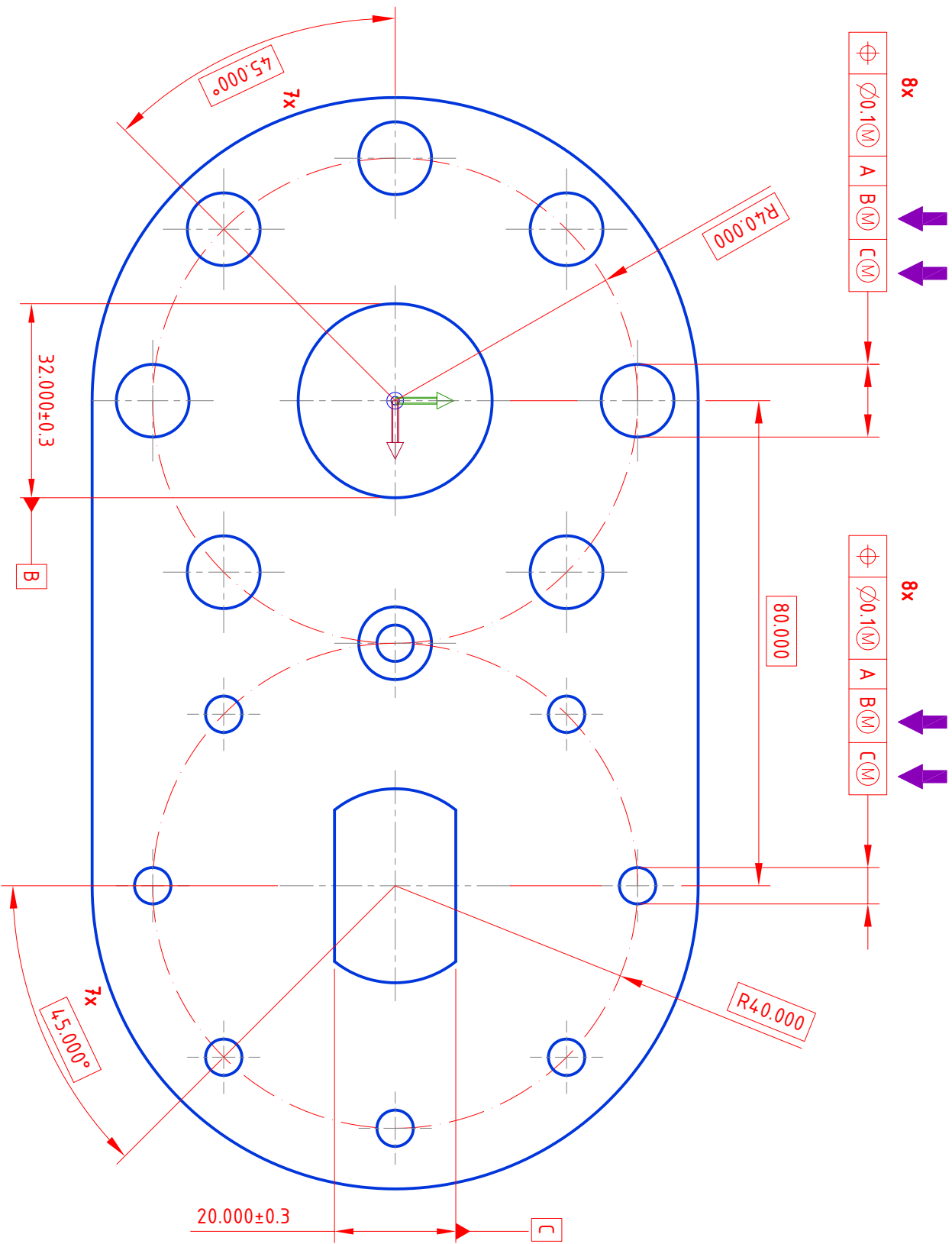


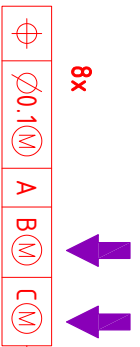
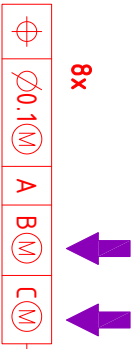
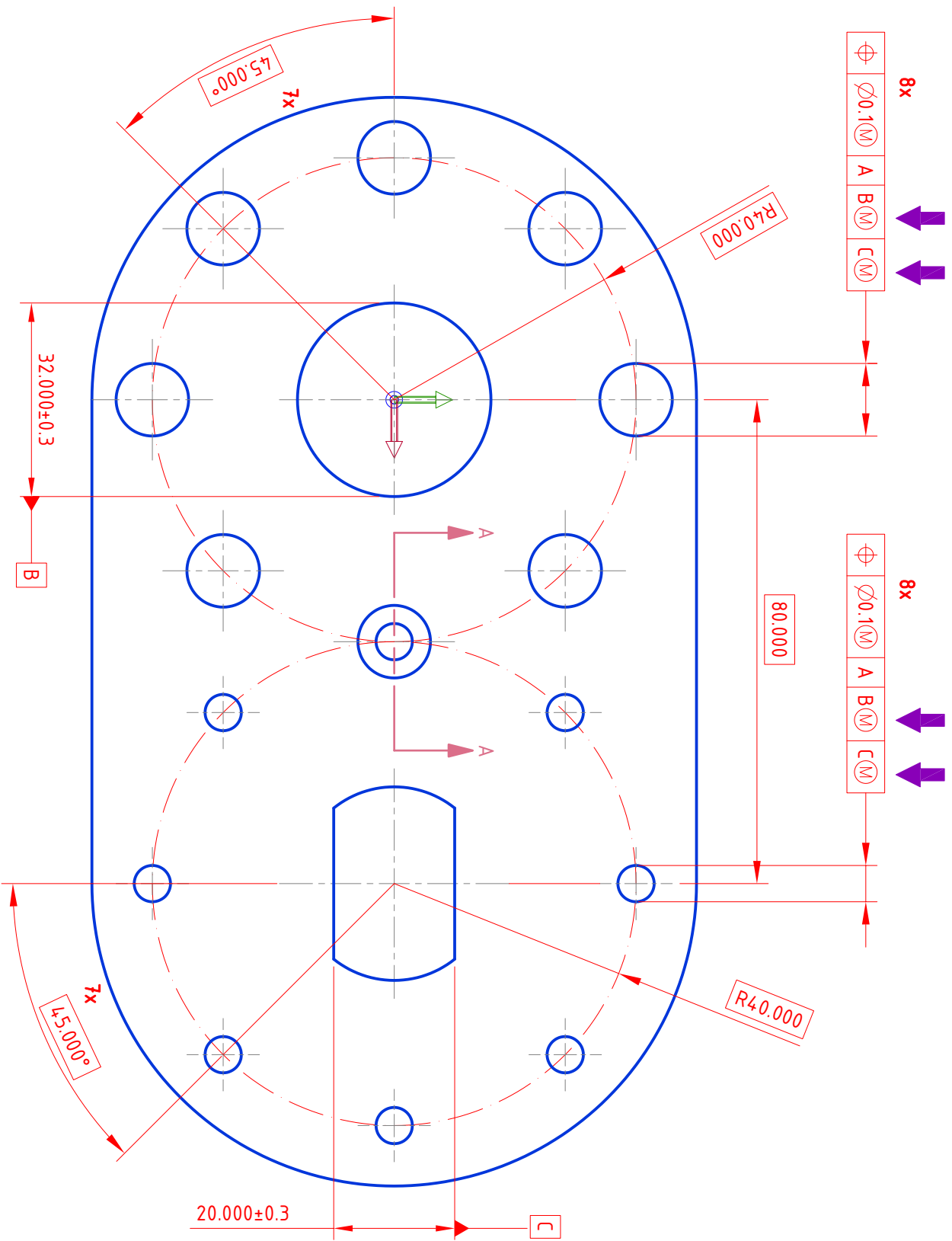
Two bore patterns

Simultaneous requirement Case #1

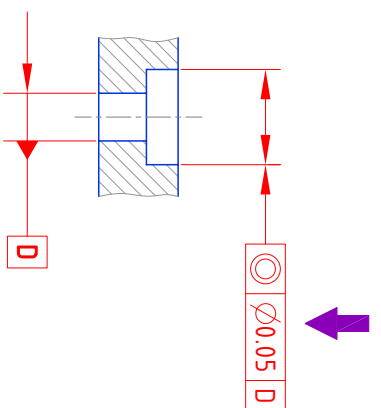


Two bore patterns

Simultaneous requirement Case #2



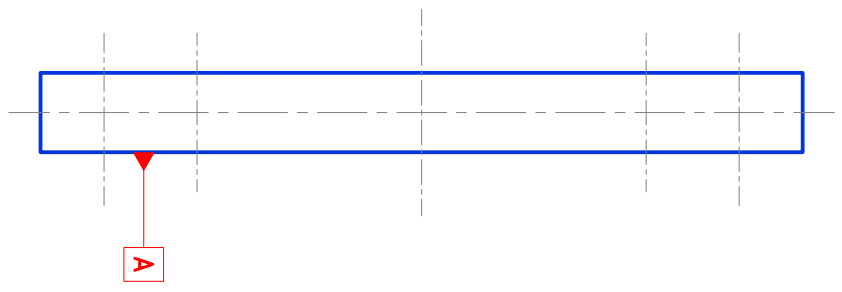
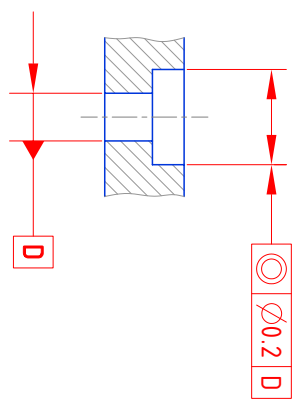
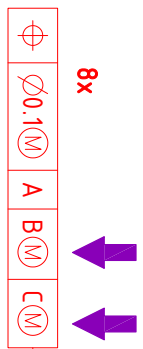
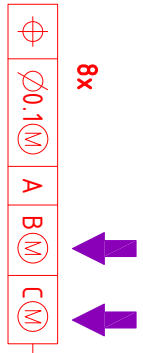
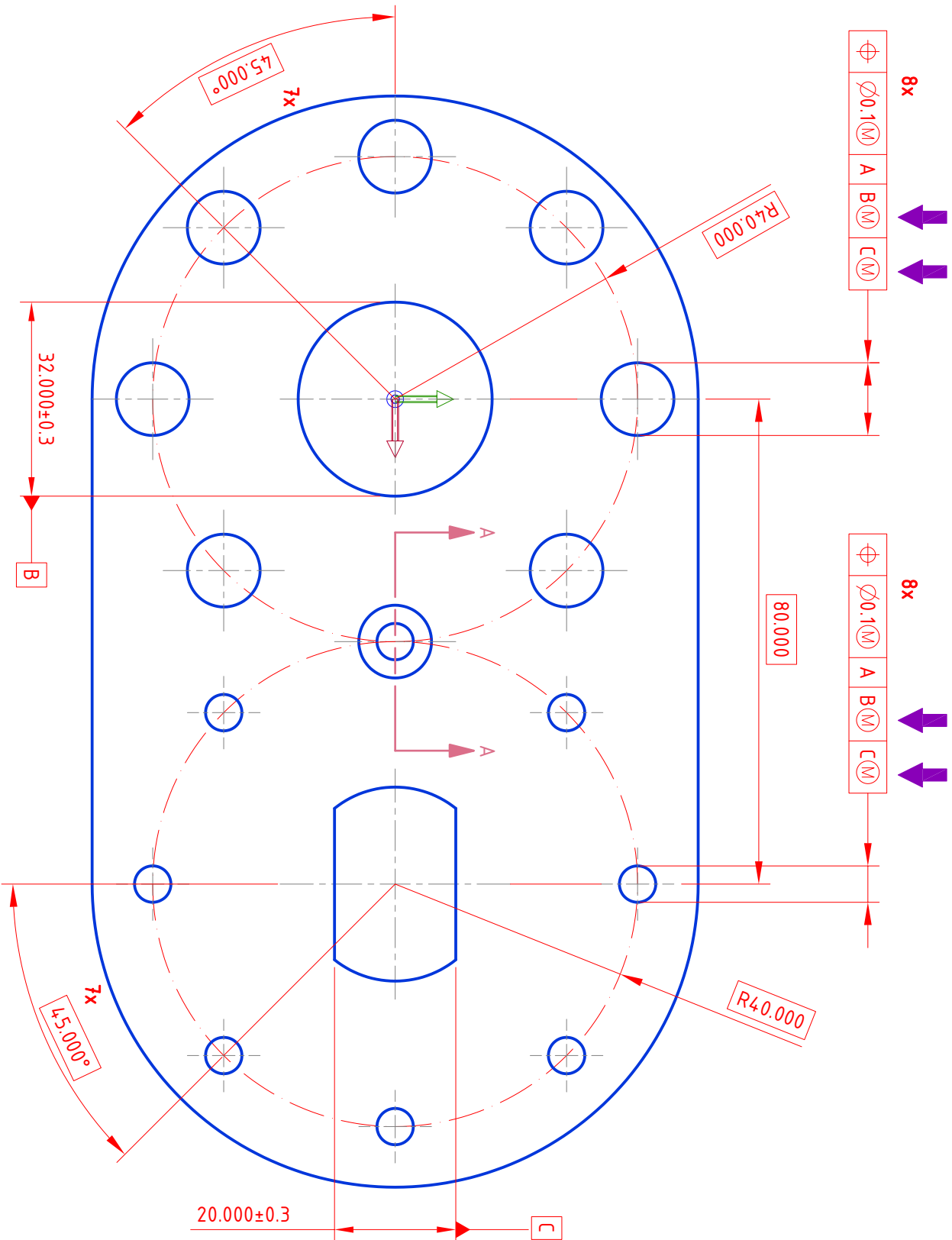
Section A-A



Two bore patterns

Simultaneous requirement Case #3

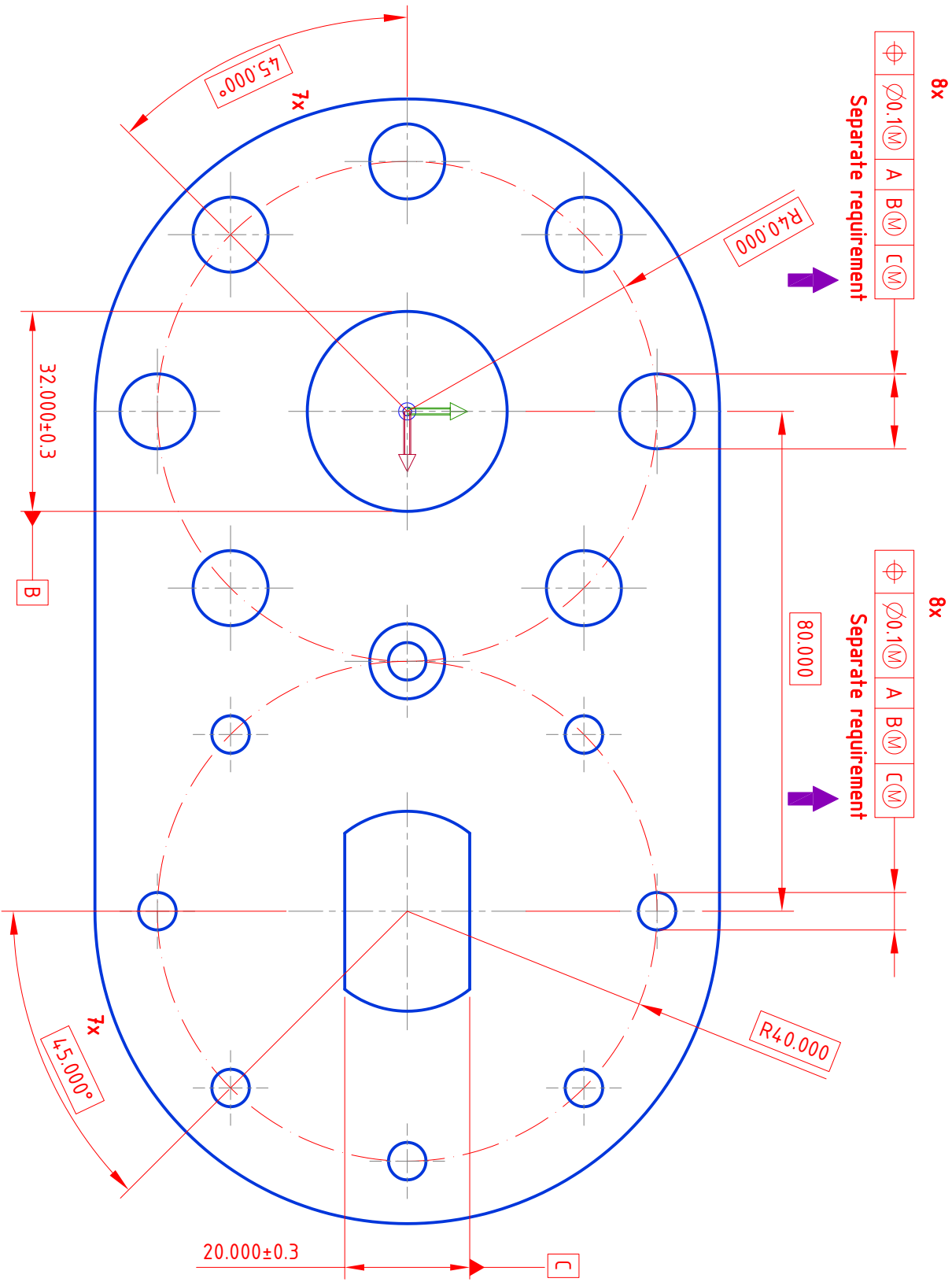
Section A-A



Two bore patterns

Separate requirement

Case #1



8x

Separate requirement



R40.000

8x

Separate requirement



80.000

R40.000

20.000 ± 0.3

C

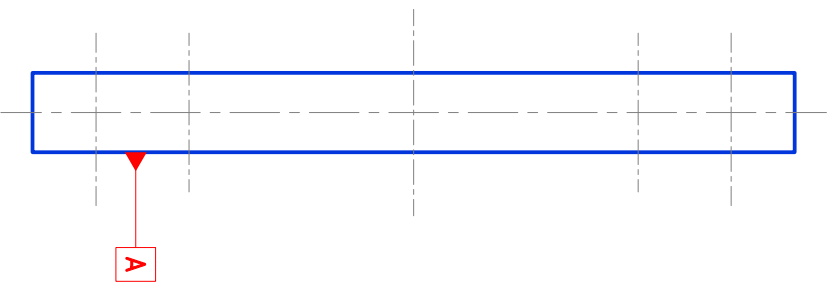
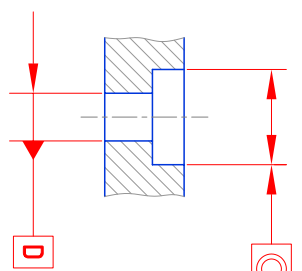
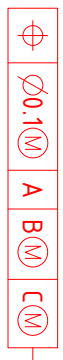
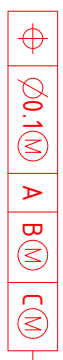
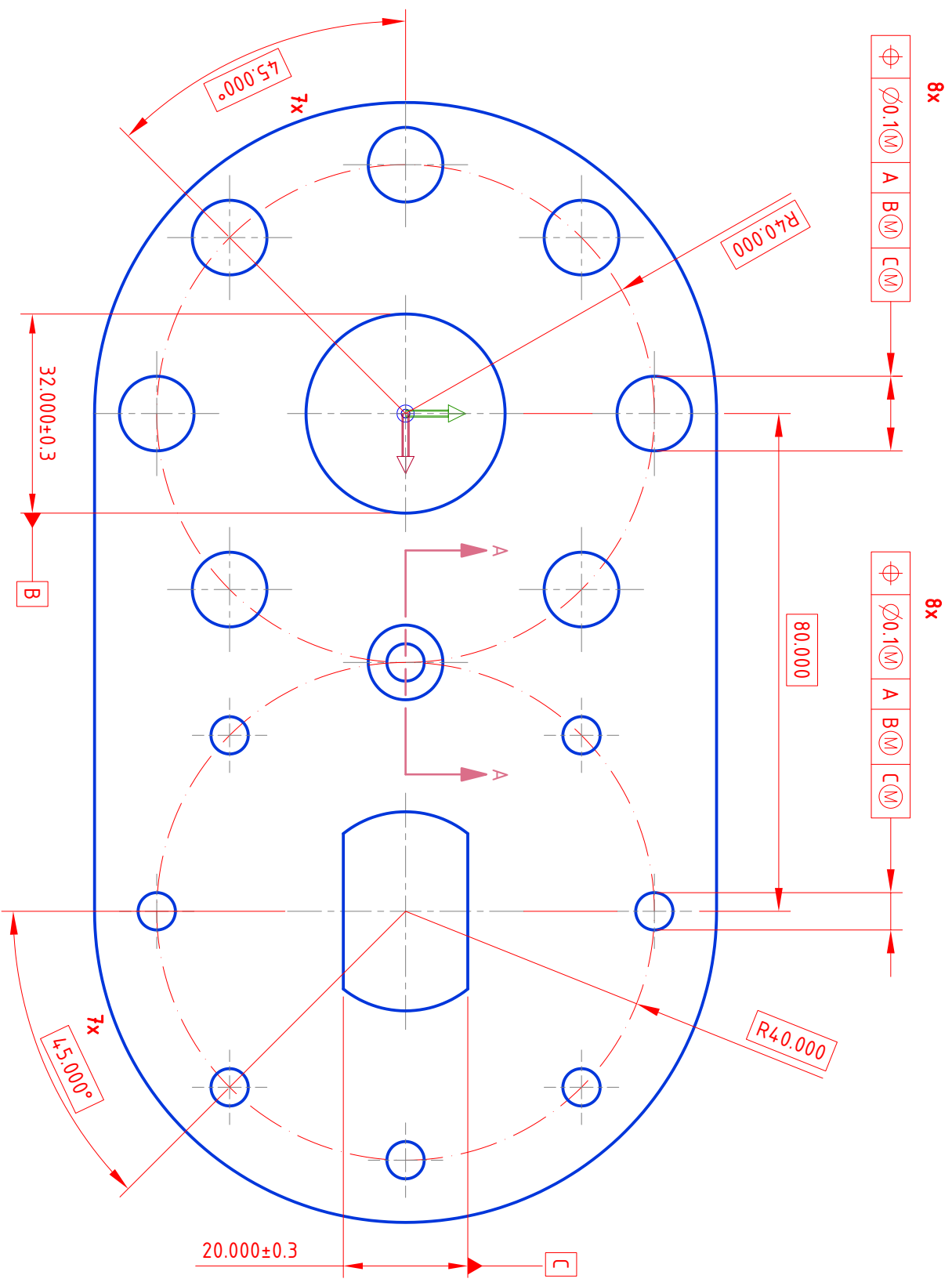
A

Two bore patterns

Separate requirement
Coaxiality-0.2

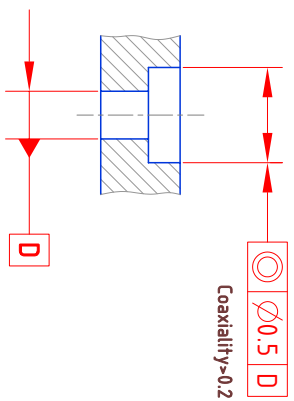
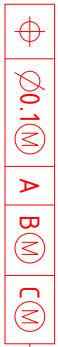
Case #2

Section A-A

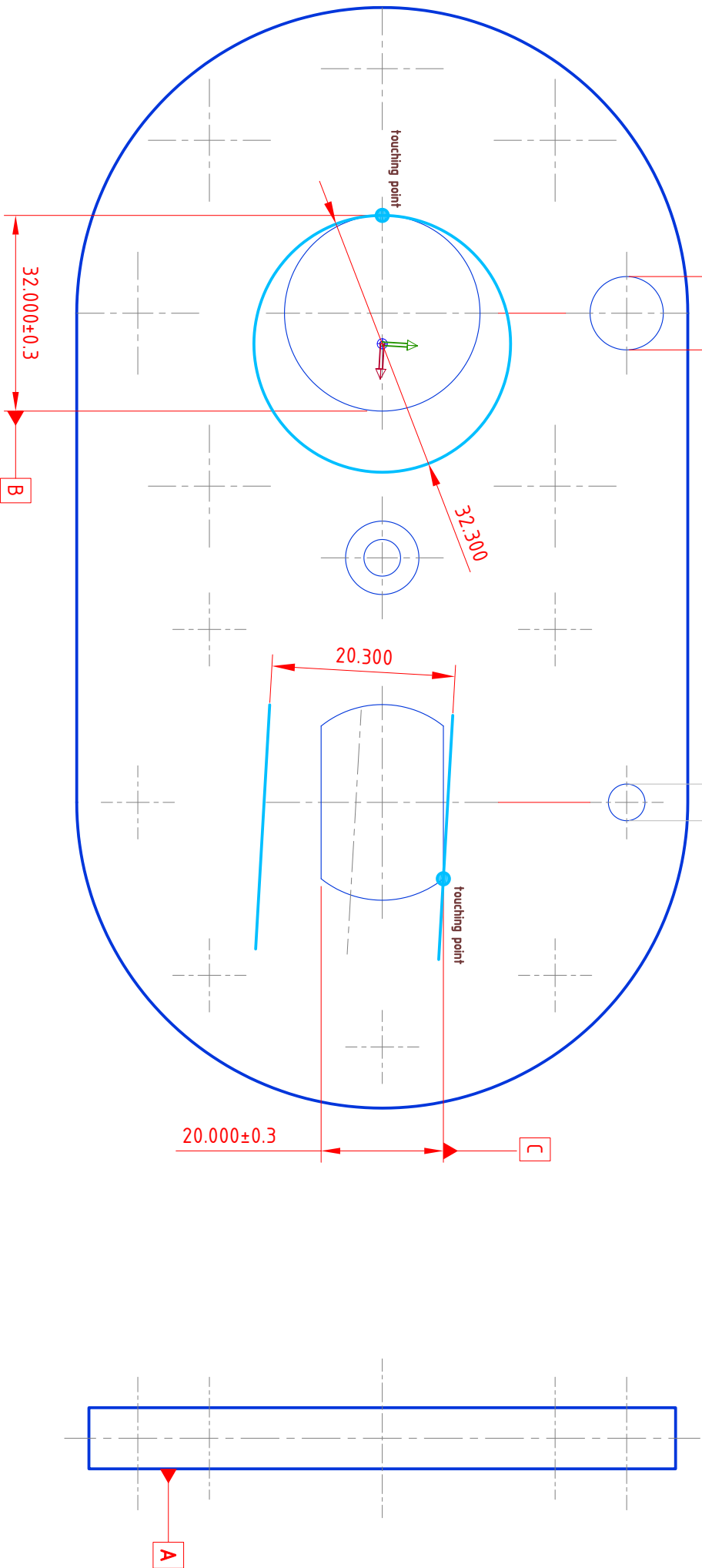


Two bore patterns

Separate requirement Case #3 Pic. 1
 Coaxiality-0.2
 max. datum shift of left pattern



Section A-A

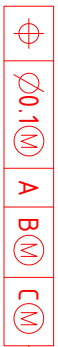


Two bore patterns

Separate requirement
Coaxiality-0.2

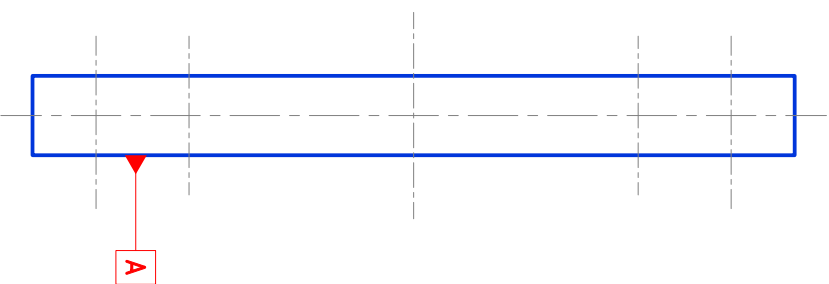
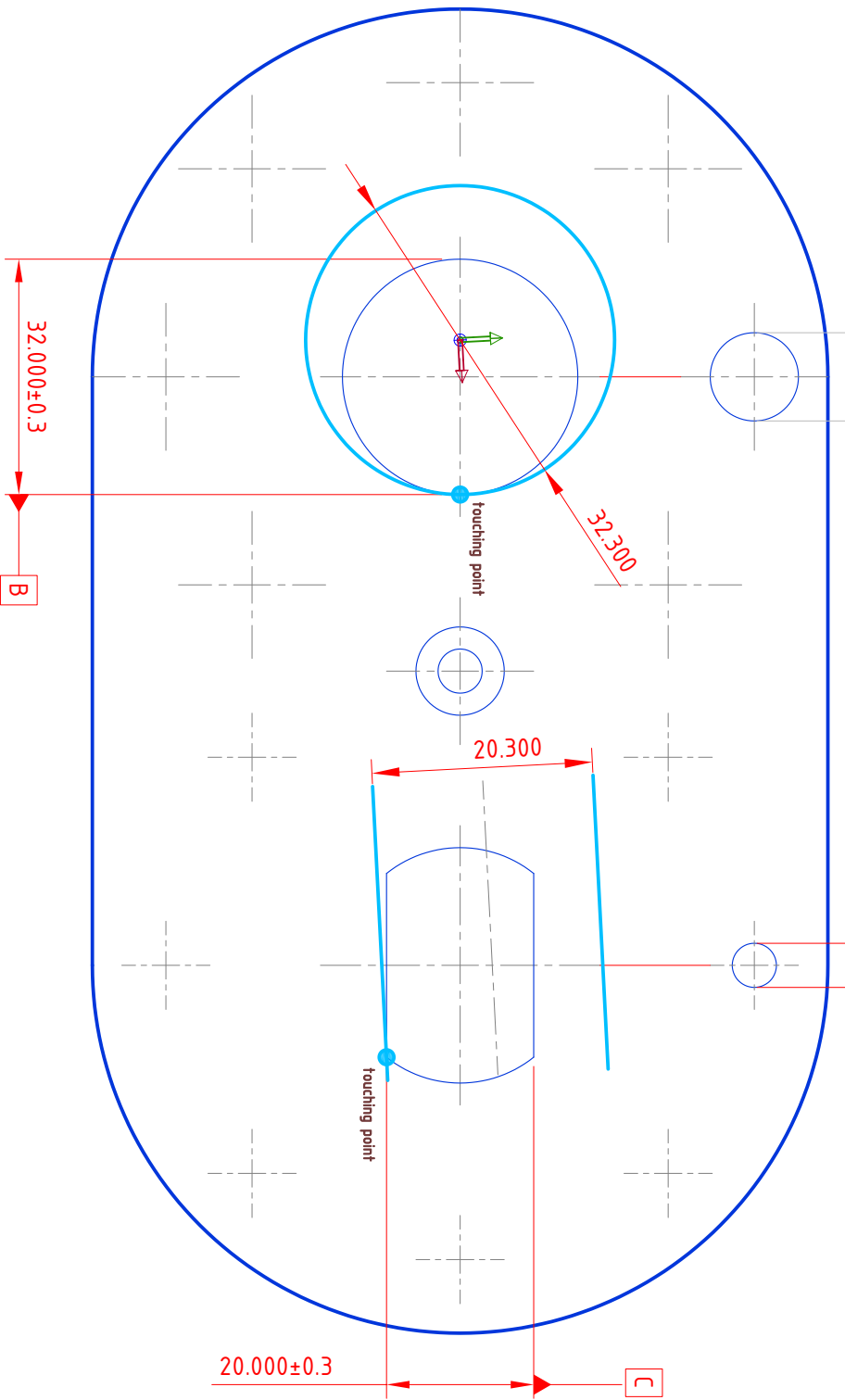
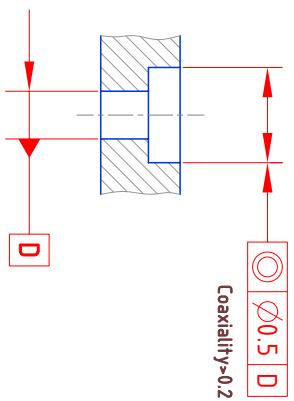
Case #3 Pic. 2

Section A-A



max. datum shift of right pattern

8x



Two bore patterns

Separate requirement
Coaxiality > 0.2

Case #3 Pic. 3

Section A-A

