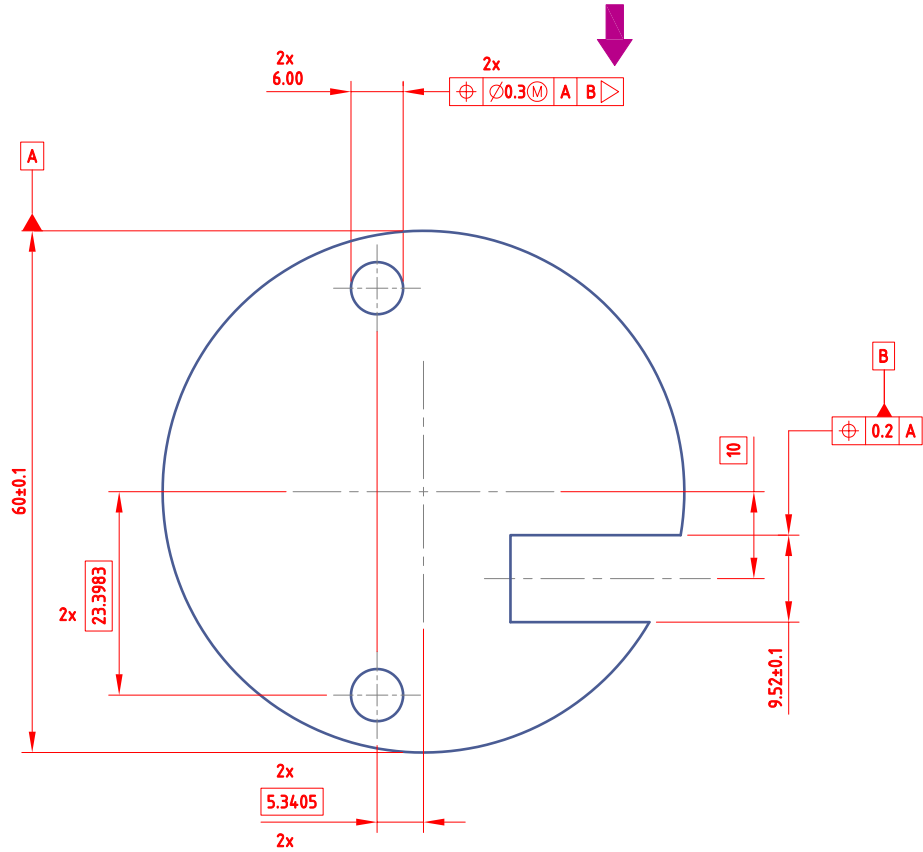
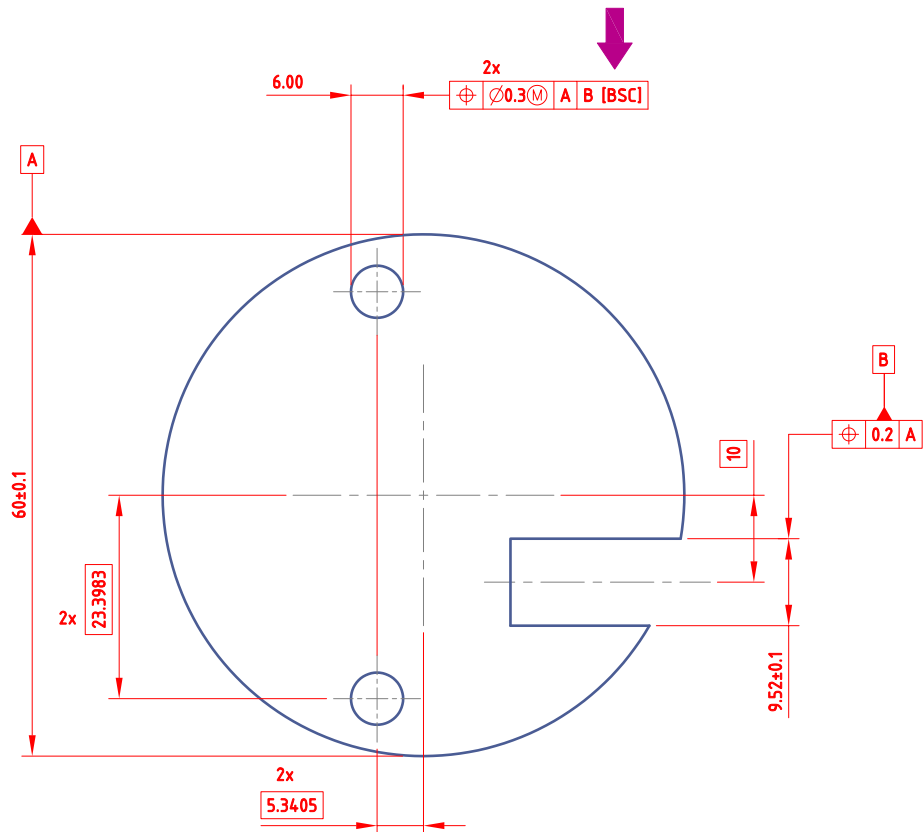


Dimensioning #1



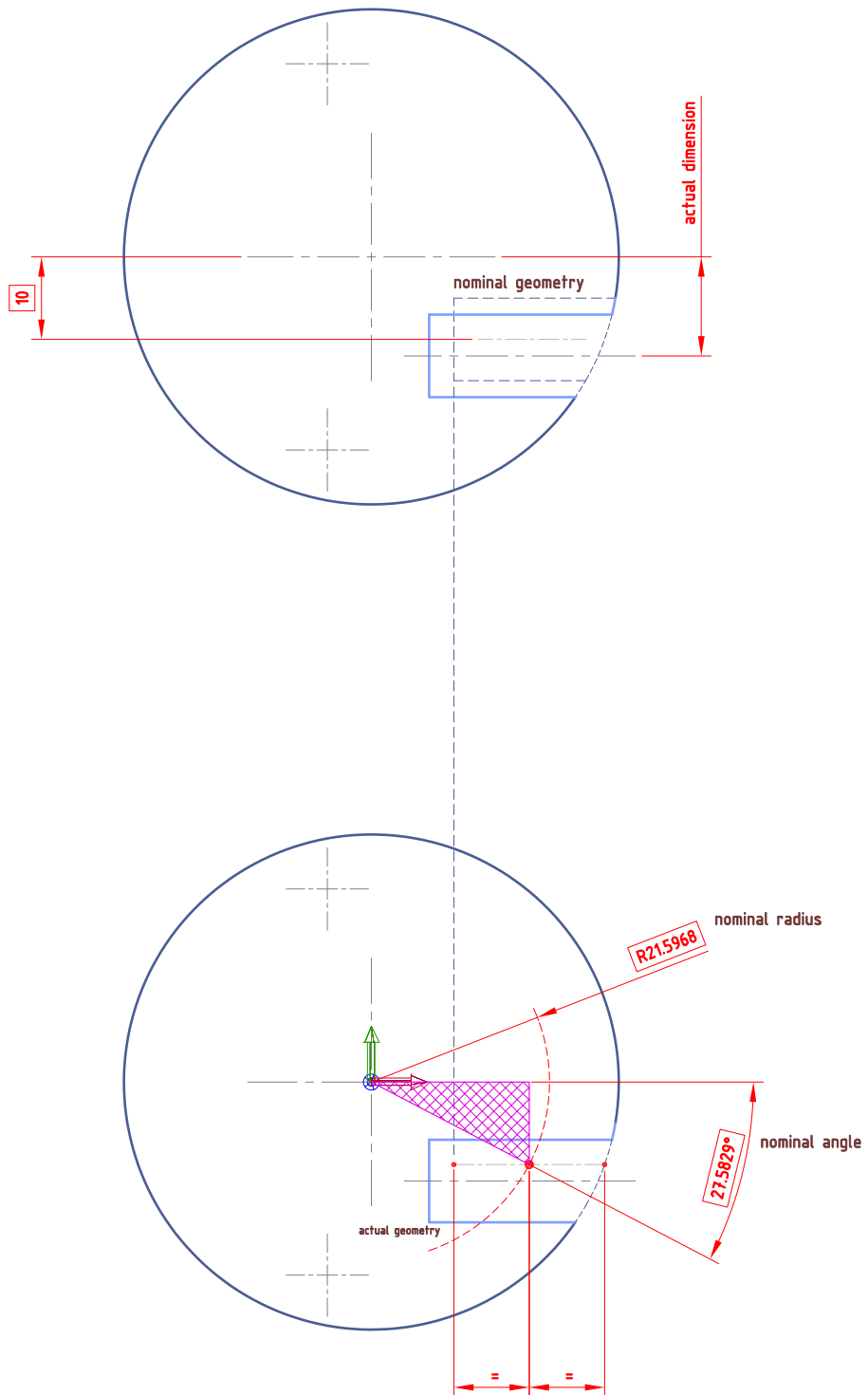
Dimensioning #2



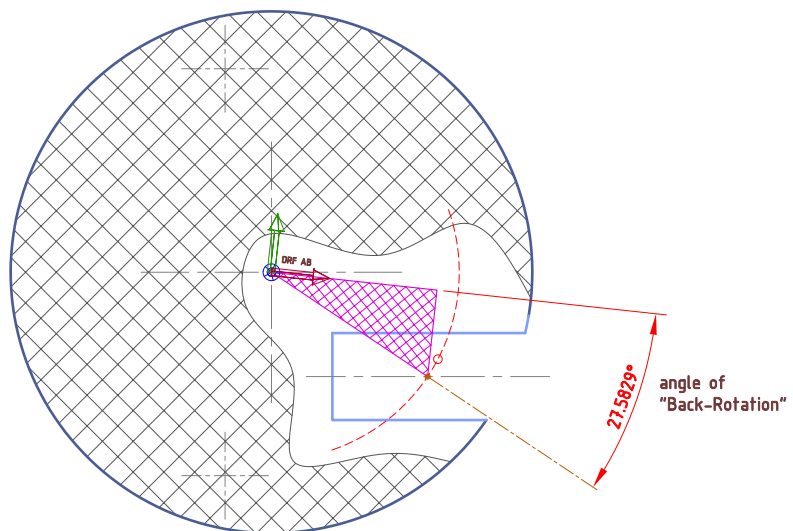
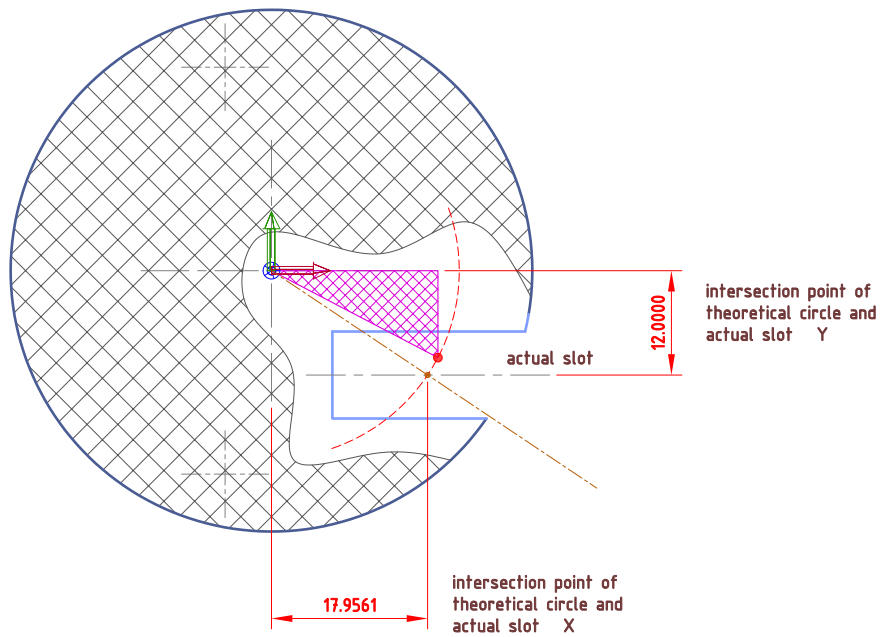
Modifier on datum B

Pic. #2

Actual geometry and nominal angle



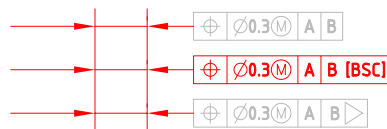
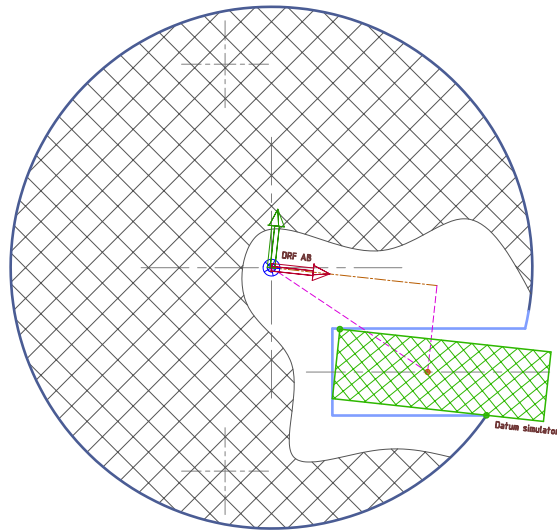
Intersection point and "Back-Rotation"



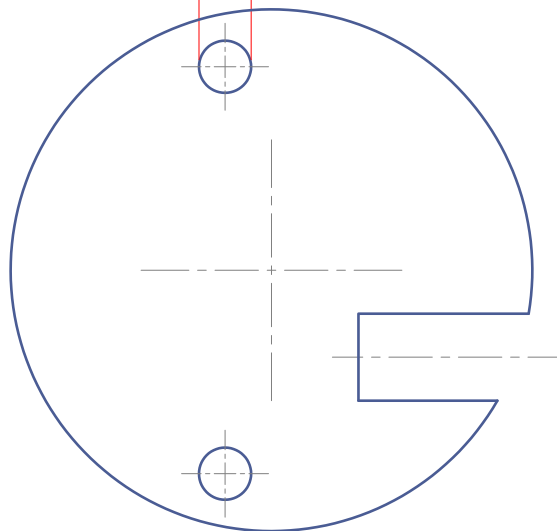
Modifier on datum B

Pic. #4

Datum B modifier



Datum AB [BSC] always means rotation. Translation is not allowed. Therefore: ["Basic"] is required!





Datum AB always means translation in Y-direction. Rotation is not allowed. Therefore: a "Translation-Modifier" is not necessary!

