

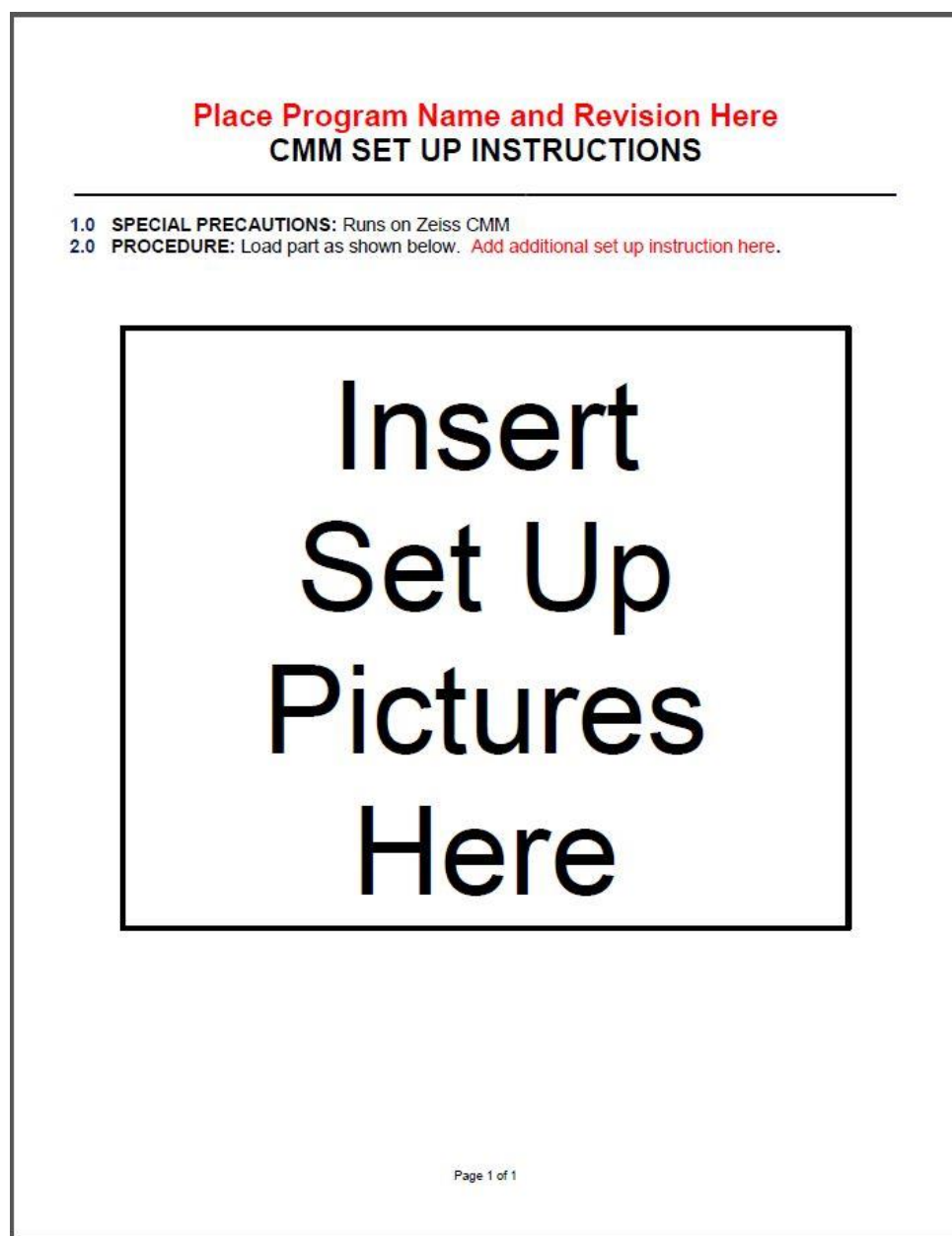
# Creating User Information Guide

Calypso allows you to add additional audiovisual information to your program. It allows for the following formats: \*.bmp, \*.jpg, \*.gif, \*.wmf, \*.pdf, \*.txt, \*.doc, \*.rtf, \*.avi, \*.mpe, \*.wav, \*.mpg, and \*.flc.

**Remember for Calypso to use some of these formats the proper software has to be installed on your PC. For example to open a \*.doc you need Microsoft Word.**

For this document we are going to add set up instructions to a program in the \*.pdf format. This is my format of choice because Adobe is free and Calypso already uses Adobe pdf's.

## Creating a document:



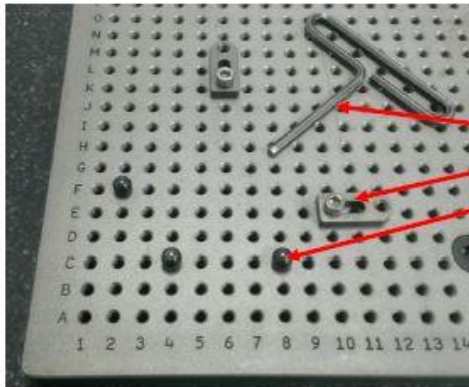
**First thing I like to do is create a Template using word (\*.doc). This is an example of my CMM Set Up Instruction Template.**

Here is an example of a completed CMM Set Up Instruction created from the Template.

## Red Training Part Rev 1 CMM SET UP INSTRUCTIONS

**1.0 SPECIAL PRECAUTIONS:** Runs on Zeiss CMM

**2.0 PROCEDURE:** Load part as shown below. After setting up staging, place part on plate with Datum A up, Datum B forward against stops at A4 and A8, and Datum C to the left against stop at F2. Secure the part with AS-1-20 and tight Hex Bolts with Allen Wrench.

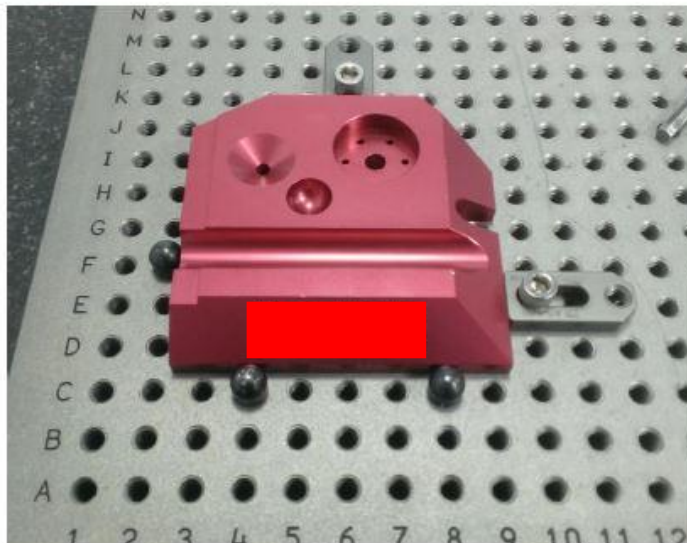


**Required Staging:**

1- 3/16 Allen Wrench QTY 1

2 - AS-1-20 with Hex Bolt QTY 2 at E10 and K6

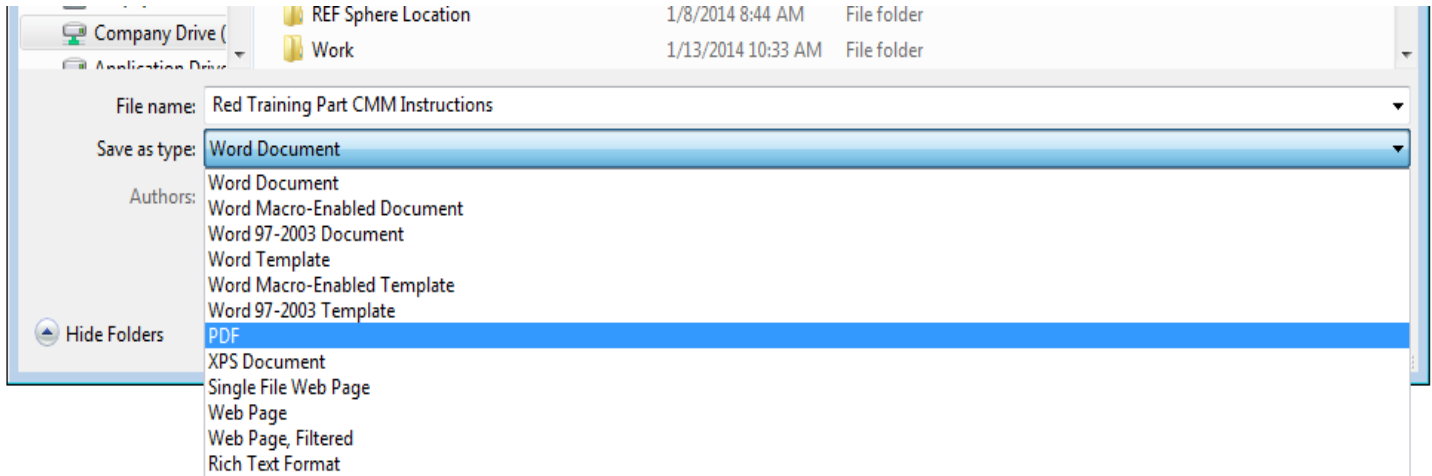
3 - RPS-20 QTY 3 at F2, C4 and C8



Page 1 of 1

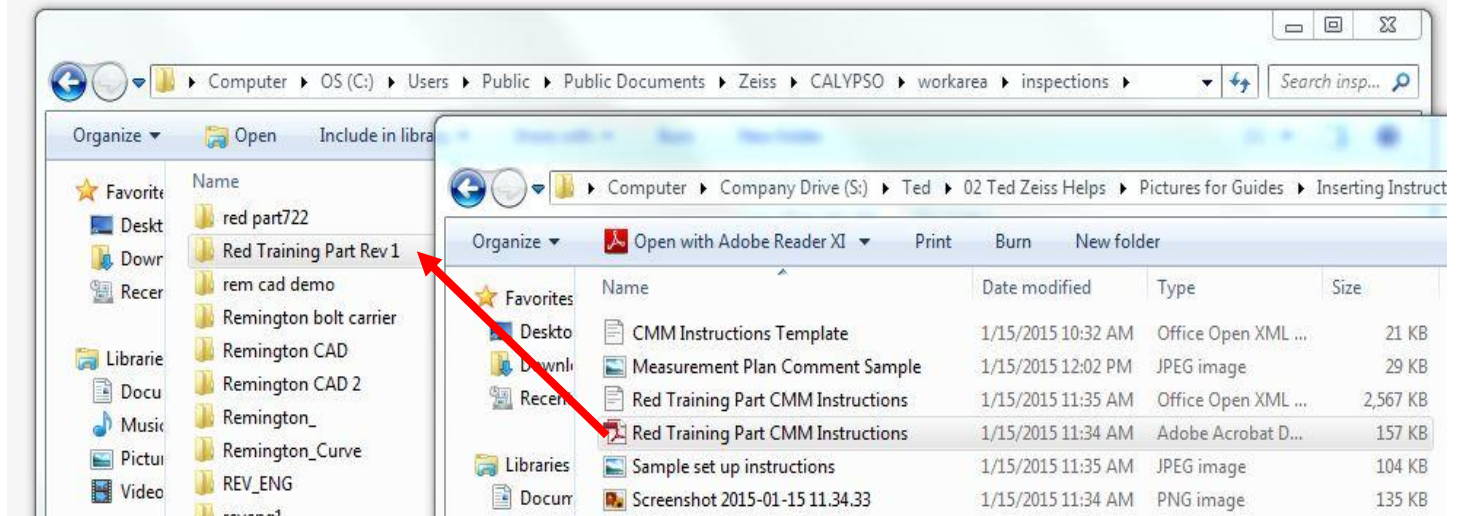
Please note this document is still in the Word format (\*.doc) I save it this way so if there are any revisions or changes needed I can change the Word document and then save as in the \*.pdf format after making the changes.

To get the Instructions into the \*.pdf format you just need to save as in Word and select PDF as the type.

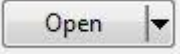


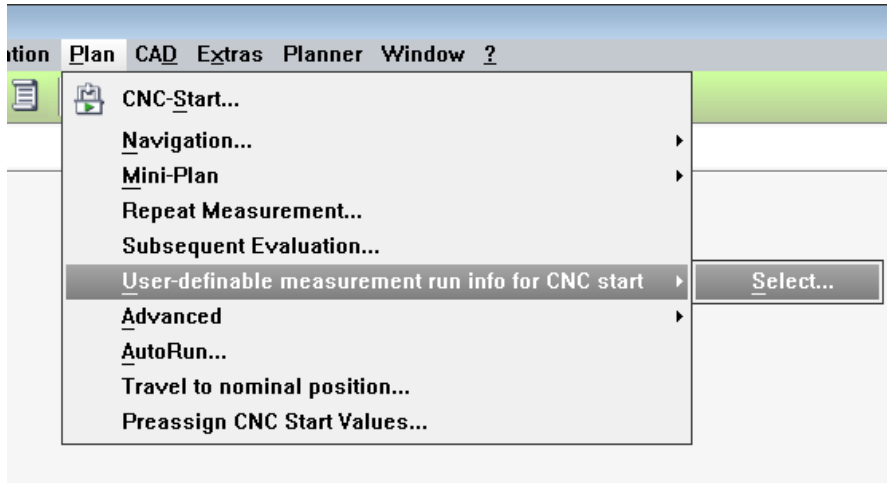
Now you have a \*.pdf of your CMM Set Up Instructions now we can add it to the Calypso program.


**Storing your File:** You need to have your CMM Set Up Instructions stored in a known location so you can find them. I like to put them in the Calypso program that the instruction is for, that way it is easy to find. **Example:** This CMM Instruction is for Red Training Part Rev 1 so I am copying the Red Training Part CMM Instruction.pdf to the Red Training Part Rev 1 folder in **workarea/inspections**.



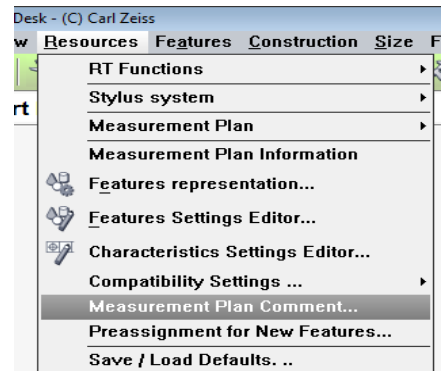
**This is just an example you may wish to keep all of your Set Up Instruction in a common location.**

**Inserting in Calypso:** Next open the program you wish to insert your instructions for. Then go to **Plan/User-definable measurement run info for CNC start/Select**. This opens up the file select screen. Go to where you have stored the CMM Set Up Instructions and select the correct instruction and press .



Now whenever the operator selects  (*Calypso or Autorun*) the file you selected will open up or play if it is an audio or video file.

**Measurement Plan Comment:** You can also add additional information to your program using the Measurement Plan Comment. To add your comment go to **Resources/Measurement Plan Comment...** and add your comment, again it appears in both Calypso and Autorun.



Here is an example reminding the operator to select User Information to view the Set Up Instructions (*Calypso run screen pictured*).

