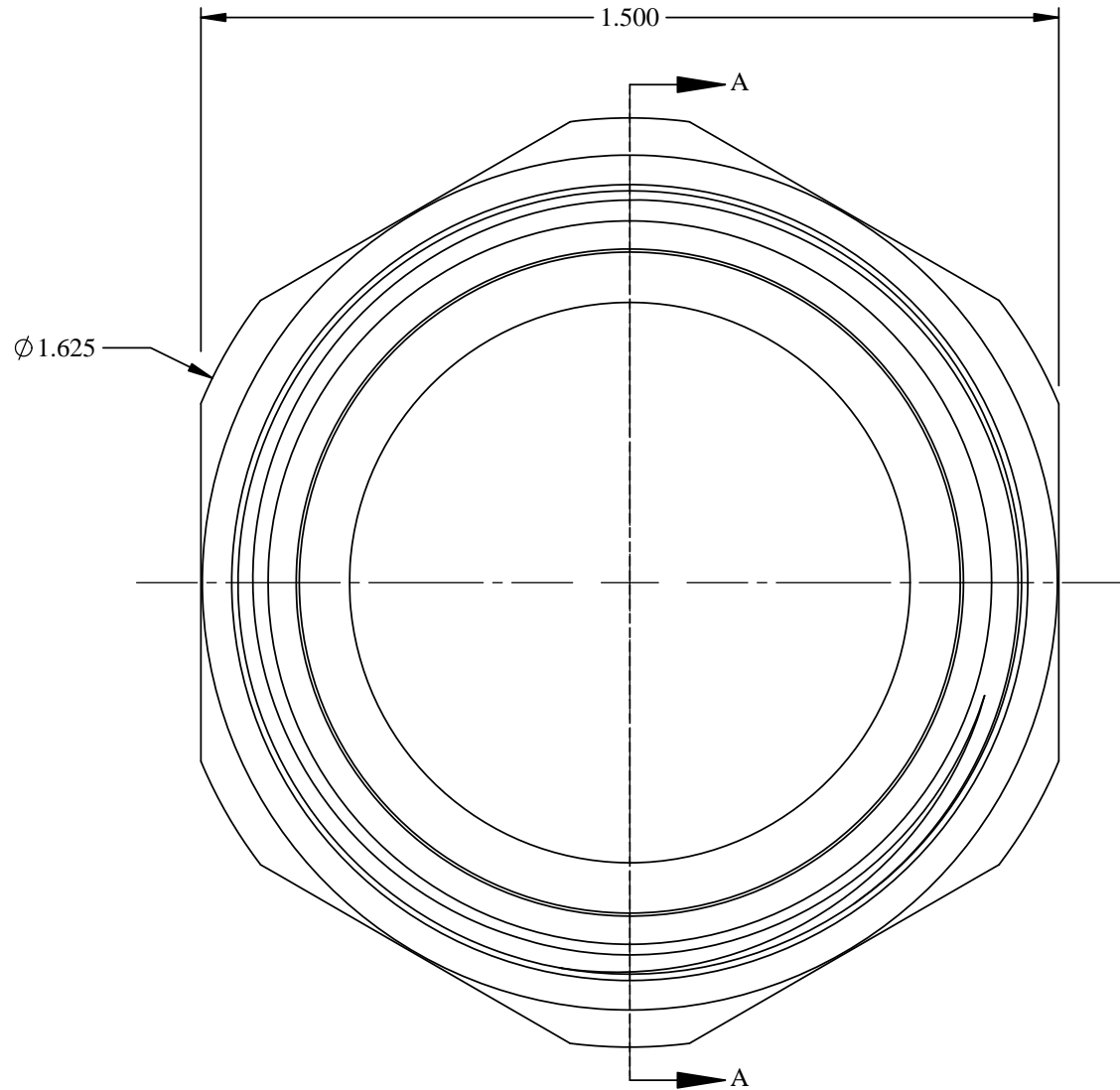
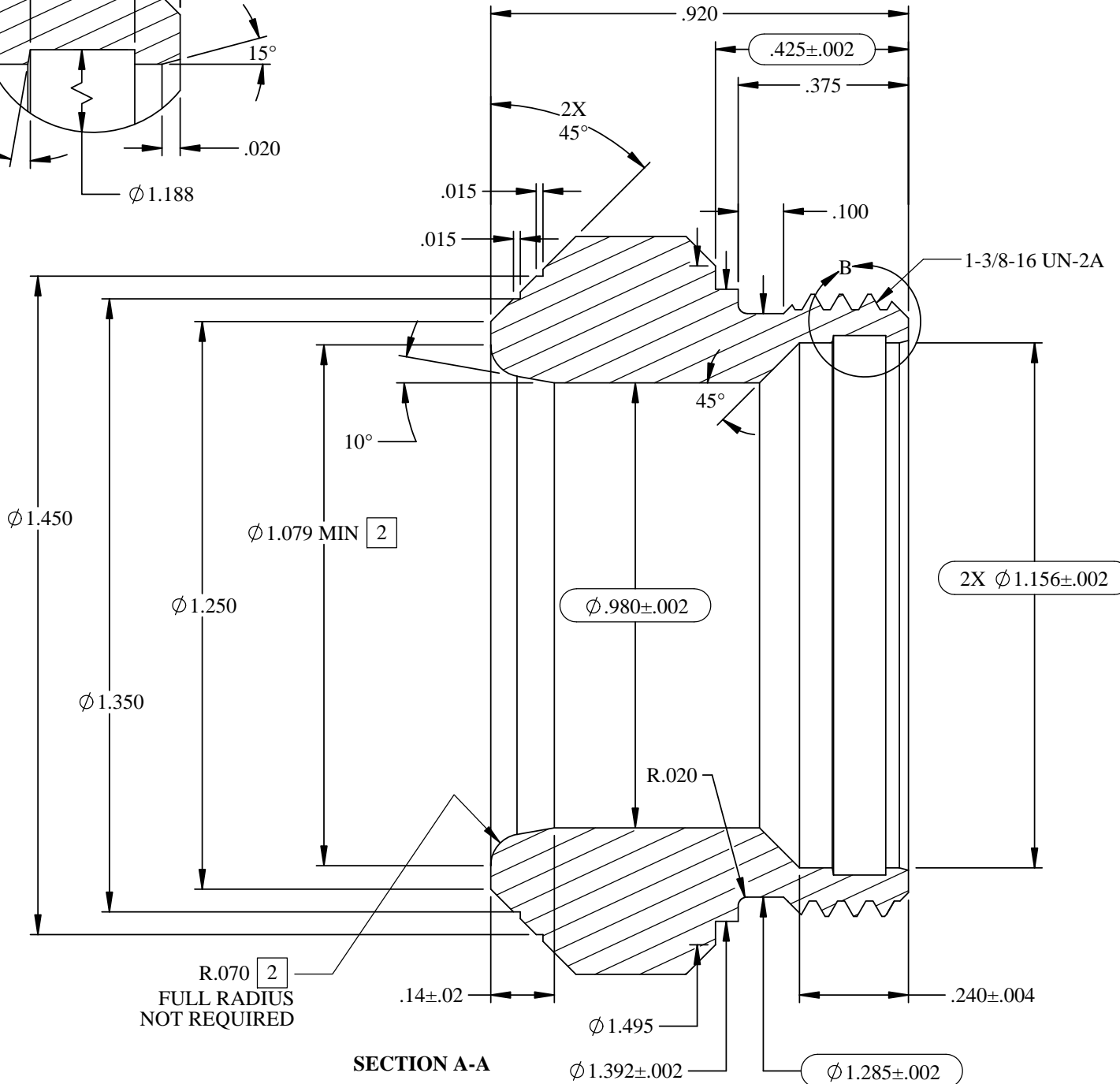
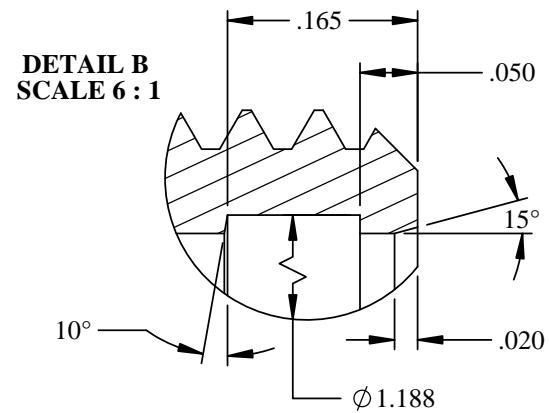



| | |
|-------------|------------|
| 1 | 2 |
| PART NUMBER | FINISH |
| 10732-01R | UNPLATED |
| 10732-01 | SEE NOTE 1 |

| 7 | 8 | 9 | | |
|------|-------|-----|----------|--|
| REV. | ECN | LOC | DATE | DESCRIPTION |
| 1 | 3298 | - | 09-27-00 | INITIAL RELEASE TO PRE-PRODUCTION |
| A | 3425 | - | 01-23-01 | RELEASE TO PRODUCTION, REMOVED .015 X 15° CHAMFER, ADDED RADIUS .010 MAX BLEND |
| B | 50970 | - | 06-11-02 | ADDED MEASURING FEATURE IN DETAIL B, 15° X .020 CHAMFER REPLACES R.010 MAX |
| C | 54955 | - | 02-18-08 | 6042-T5511 WAS 6262-T6511 |
| D | 57781 | - | 01-26-12 | ADDED NOTE [2], ADDED $\phi 1.079$ MIN [2], R.070 [2] FULL RADIUS NOT REQUIRED WAS R.070, REDRAWN IN SOLIDWORKS, ADD CRITICAL DIMS UPDATE NOTE 1 RE: FINISH SPEC |
| E | 57976 | A2 | 04-24-12 | REDESIGN RECESS, ADDED .165, 10°, .050 |



NOTES:
 1). FINISH: ETCH AND YELLOW IRIDITE PER MIL-DTL-5541, CLASS III, THEN LUBRICATE PER ESN0002. COLOR TO BE APPROVED BY PPC.
 [2] MINIMUM DIAMETER AT INTERSECTION OF R.070 AND END OF PART. RADIUS MUST BREAK EDGE ALL THE WAY AROUND.

| | | | | |
|--|--|---|---------------------------------|--|
| UNLESS OTHERWISE SPECIFIED | | INIT | DATE |  JOHN MEZZALINGUA ASSOCIATES, INCORPORATED 6176 EAST MOLLOY ROAD, P.O. BOX 278 EAST SYRACUSE, NEW YORK 13057-0278 TEL. 800-468-2288 -- FAX. 315-431-7201 |
| ALL DIMENSIONS ARE IN INCHES DIMENSIONAL LIMITS APPLY BEFORE PLATING .005 MAX BREAK OR RADIUS ON ALL CORNERS PERMISSIBLE TOLERANCES -- .XX ±.01 .XXX ±.005 | | DRAWN BY | | |
| WEIGHT (LBS/M) 66.266 | | CHECKED BY | | THESE DRAWINGS AND SPECIFICATIONS ARE THE PROPERTY OF PPC, A DIVISION OF JOHN MEZZALINGUA ASSOCIATES, INCORPORATED AND SHALL NOT BE REPRODUCED, COPIED OR USED AS A BASIS FOR MANUFACTURE OR SALE OF EQUIPMENT OR DEVICES WITHOUT WRITTEN PERMISSION. |
| VOLUME (CU IN) 0.679 | | DESIGN APPROVAL | | |
| SURF. AREA (SQ IN) 9.424 | | MATERIAL: ALUMINUM, 6042-T5511 (ASTM B221) | TITLE: BACK NUT, 3 PC, 860QR | |
| INNER AND OUTER DIAMETERS WITHIN .003 (FIM) | | FINISH: SEE TABLE | SCALE 3:1 | SIZE B |
| SURFACE TEXTURE INTERPRET DIMENSIONS PER ASME Y14.5M-1994 | | DWG. NO. 10732-XX | | SHEET 1 OF 1 |