



Select Feature

CMM | **Measuremen...** | **Characterist...** | **Features**

Base / Start Alignment

Base Alignment

40002100- OP1-BS
40002100- OP1

Rotation in space: +Z Axis
Plane+Z

Planar Rotation: +X Axis
2d Line+Y

X Origin: 2d Line+X

Y Origin: 2d Line+Y

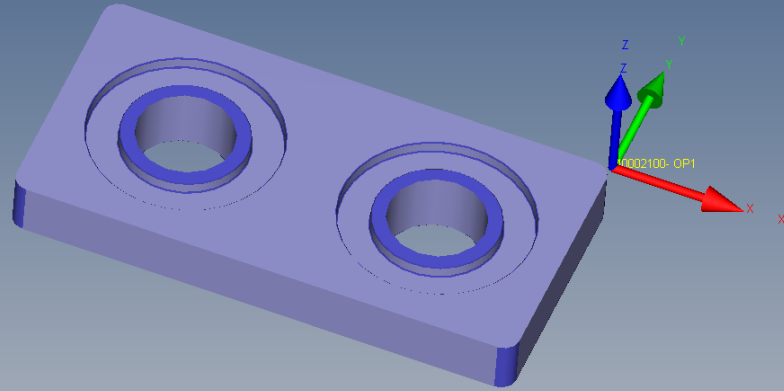
Z Origin: Plane+Z

Manual Alignment
Execute During Run As:
 Automatic Measurement
 Set base alignment to zero

Block edges

By blocking one of the edges of the clearance planes you prevent the CMM from moving over this edge.

Relative To Base Alignment



0.5 inch

